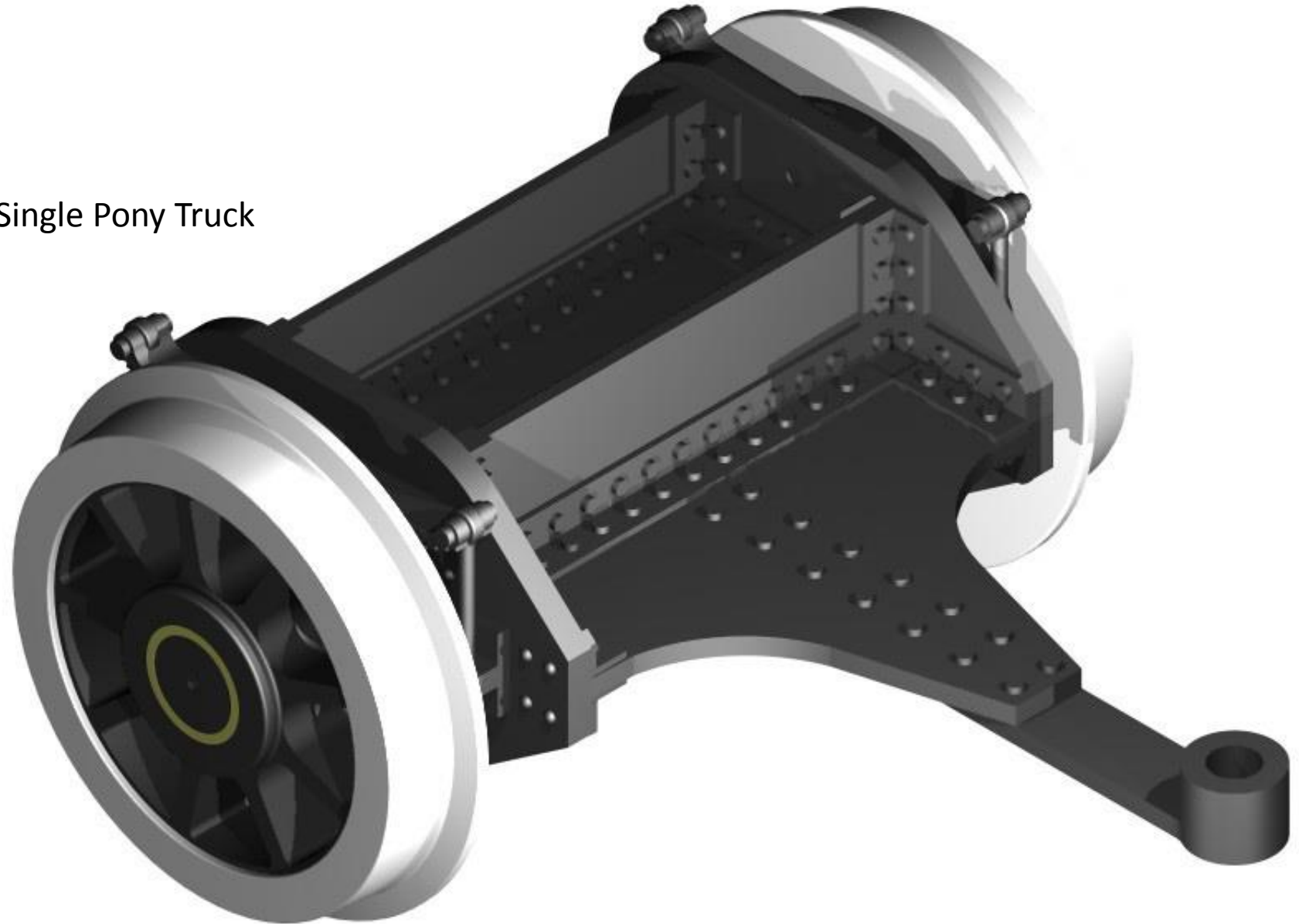


NSWGR Z20 7mm Tank Loco Kit

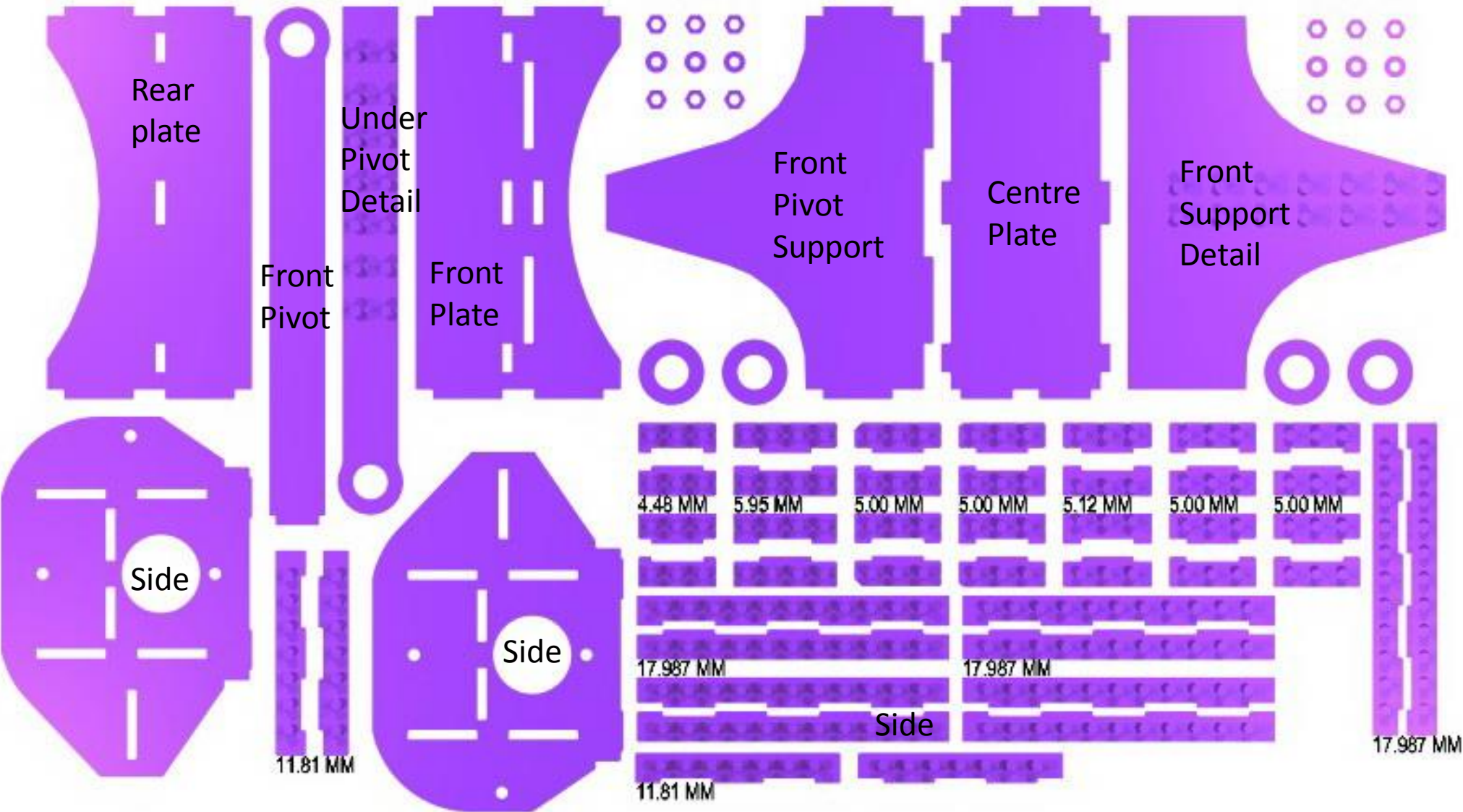
Single Axle Pony Truck

Outcome ---- Completed Single Pony Truck



NSWGR Z20 7mm Tank Loco Kit

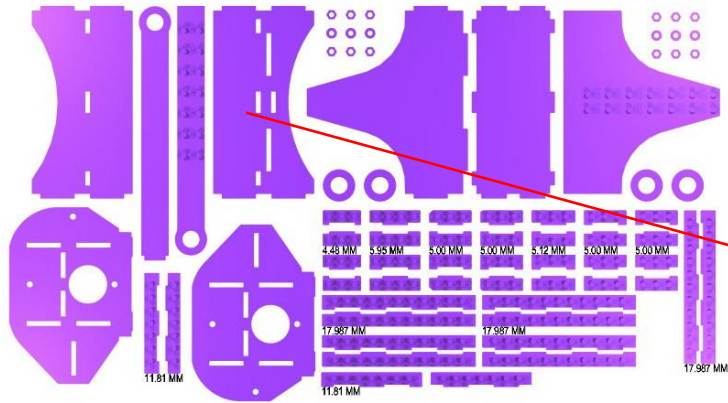
Single Axle Pony Truck Step _01



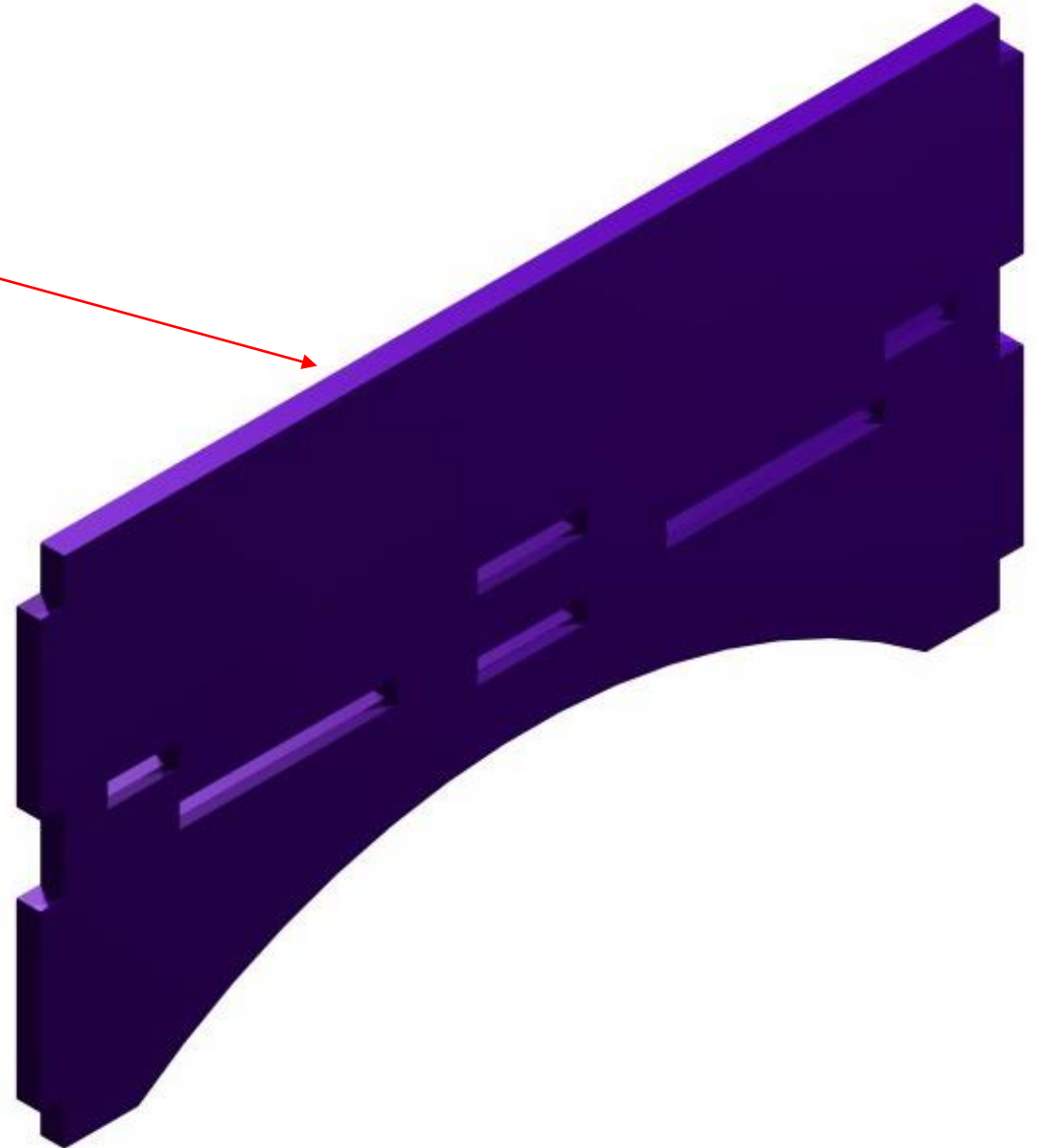
The etch is made from 0.55 mm Nickel Silver. The parts are labelled to make the task of identification a little easier. I have also listed the dimensions of the riveted angle pieces so that construction is also made easier. The riveted angle pieces need to be soldered together before fitting into place. The tabs, holding the parts on the fret also need to be cleaned up with a fine sand paper, before using them.

NSWGR Z20 7mm Tank Loco Kit

Single Axle Pony Truck Step _02

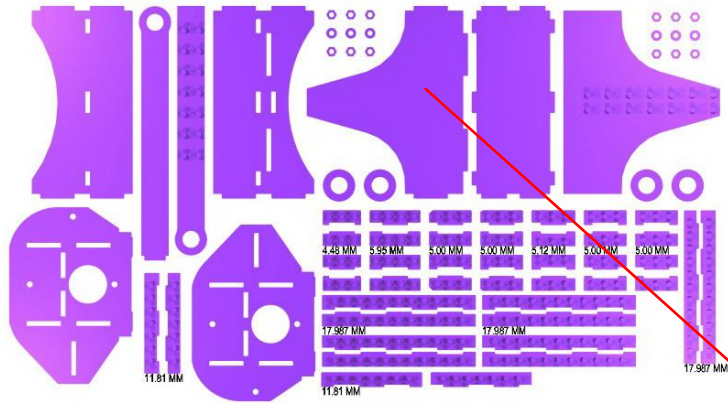


The front plate is the starting point for the construction of the single axle Pony Truck of front Pony Truck. Notice the tabs in the etch, that allows other parts to be fitted.

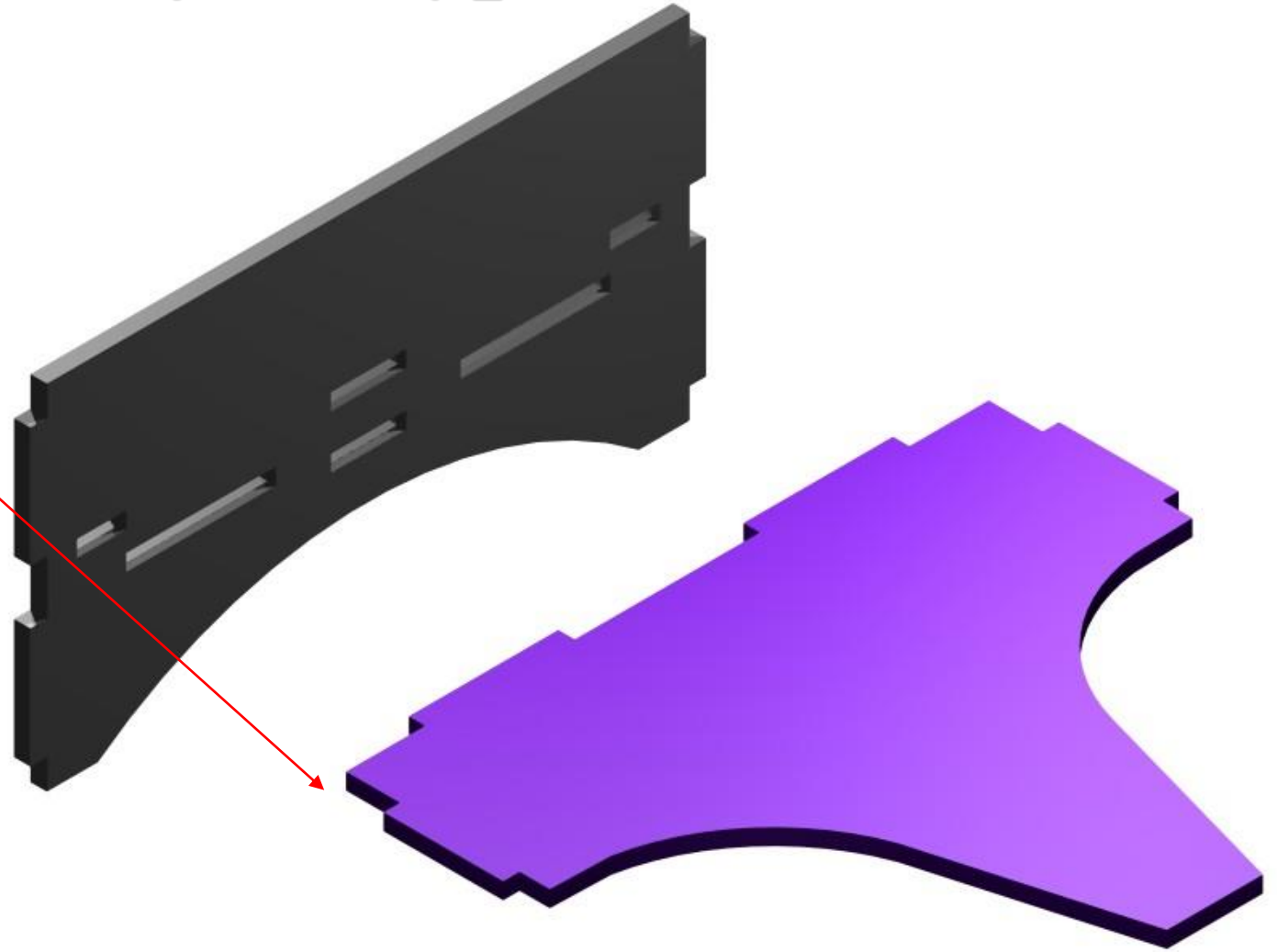


NSWGR Z20 7mm Tank Loco Kit

Single Axle Pony Truck Step _03

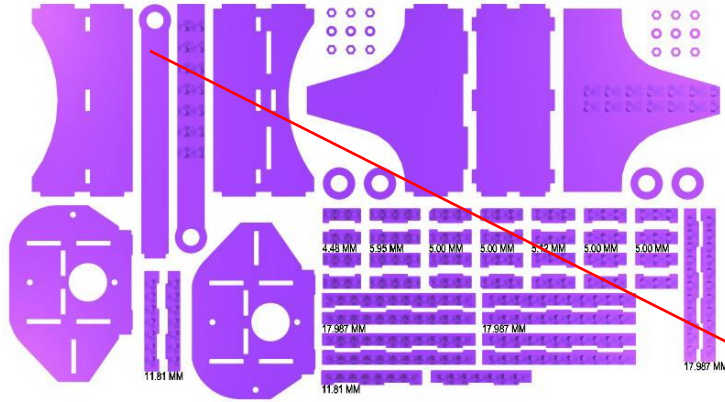


The Pivot Support Plate is fitted and soldered into place. Please ensure that the parts fit snug with no gaps. It would be best to tack solder the parts in place, so that they can be fully soldered when completely together.

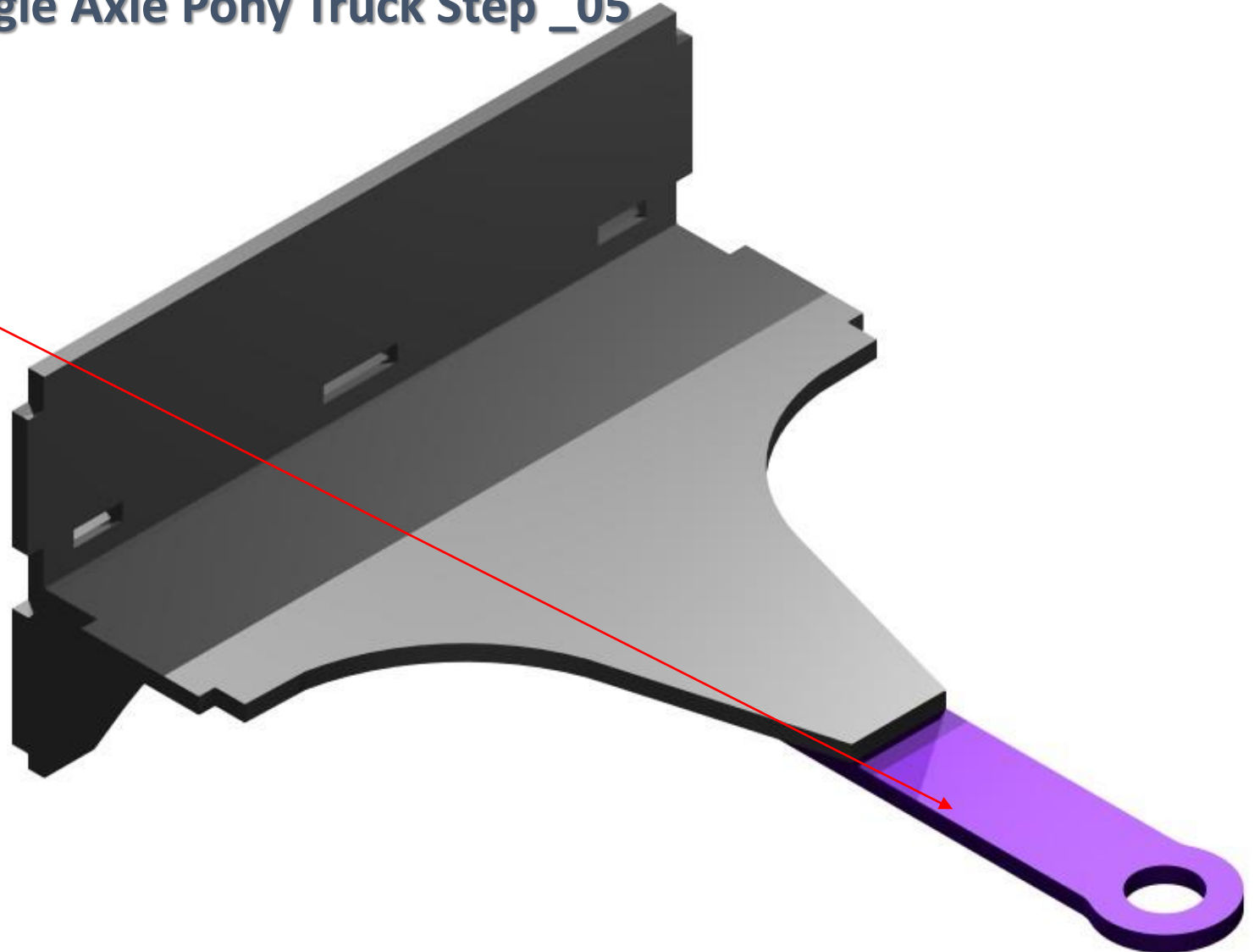


NSWGR Z20 7mm Tank Loco Kit

Single Axle Pony Truck Step _05

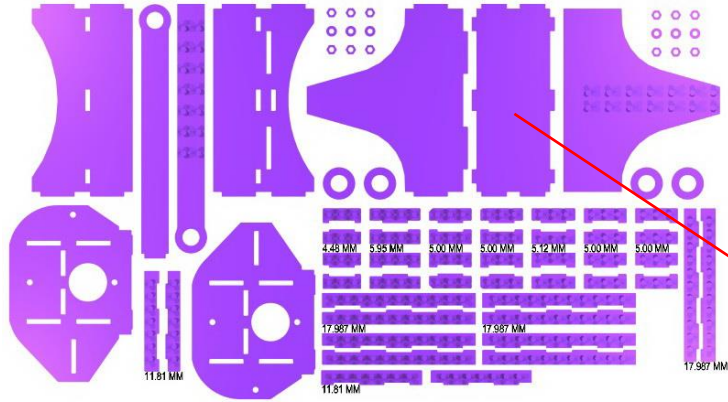


Fit the Front Pivot next, which is tabbed into the front plate, and soldered to the Pivot Support Plate.

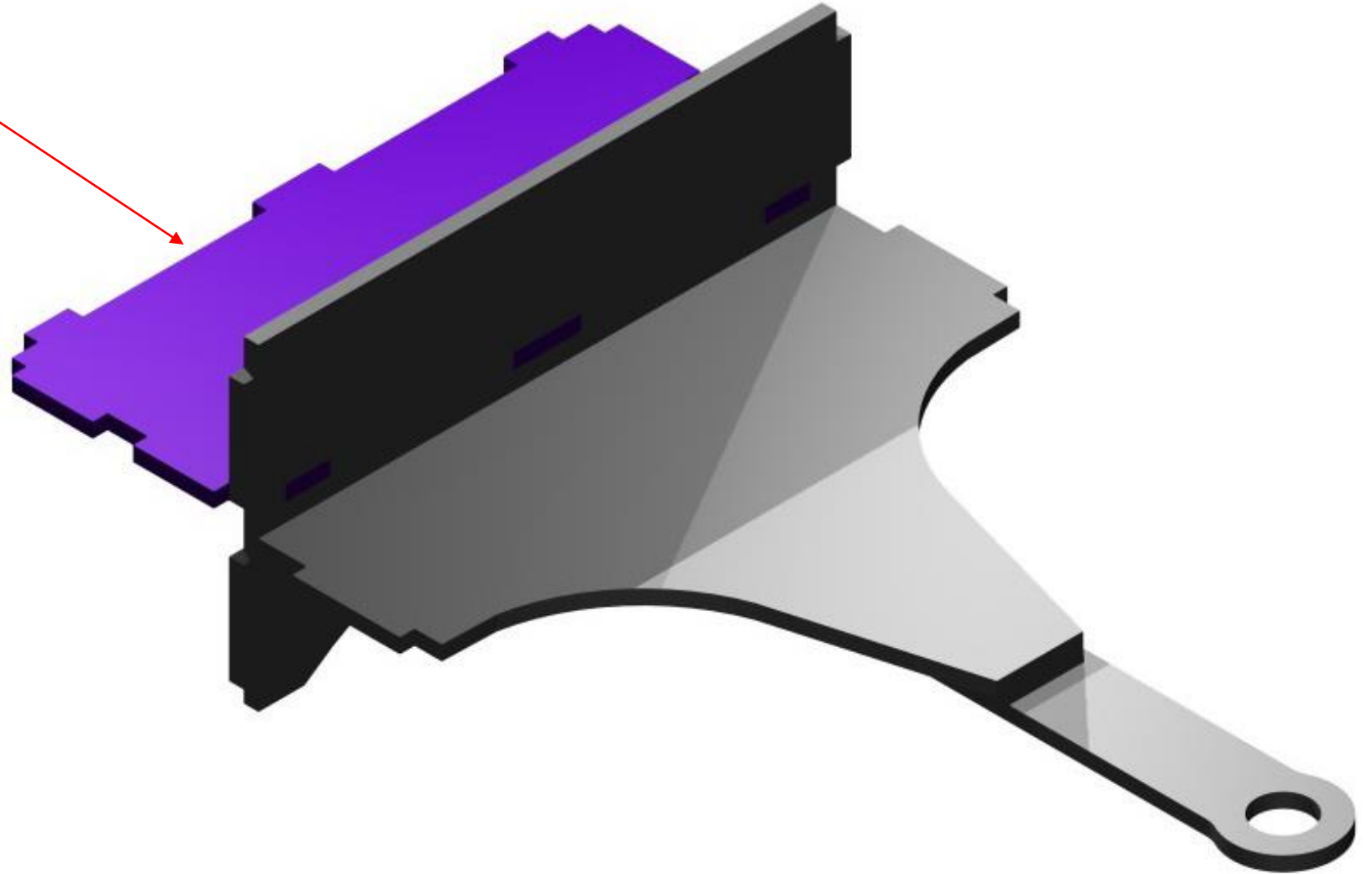


NSWGR Z20 7mm Tank Loco Kit

Single Axle Pony Truck Step _06

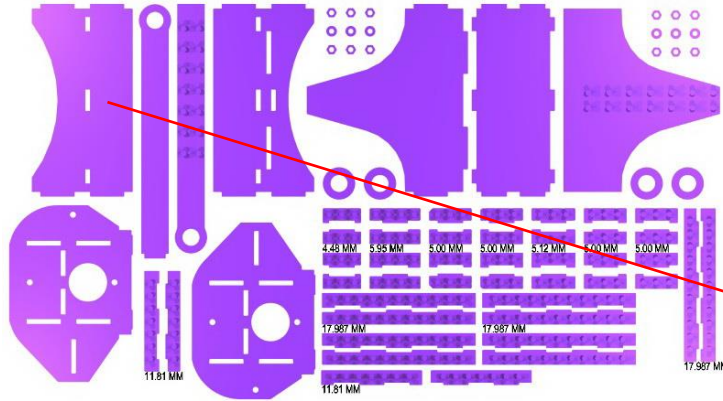


The centre plate is fitted next. This is the link between the front, rear and sides, and this is where the modeller, needs to ensure that the whole unit is square and straight.

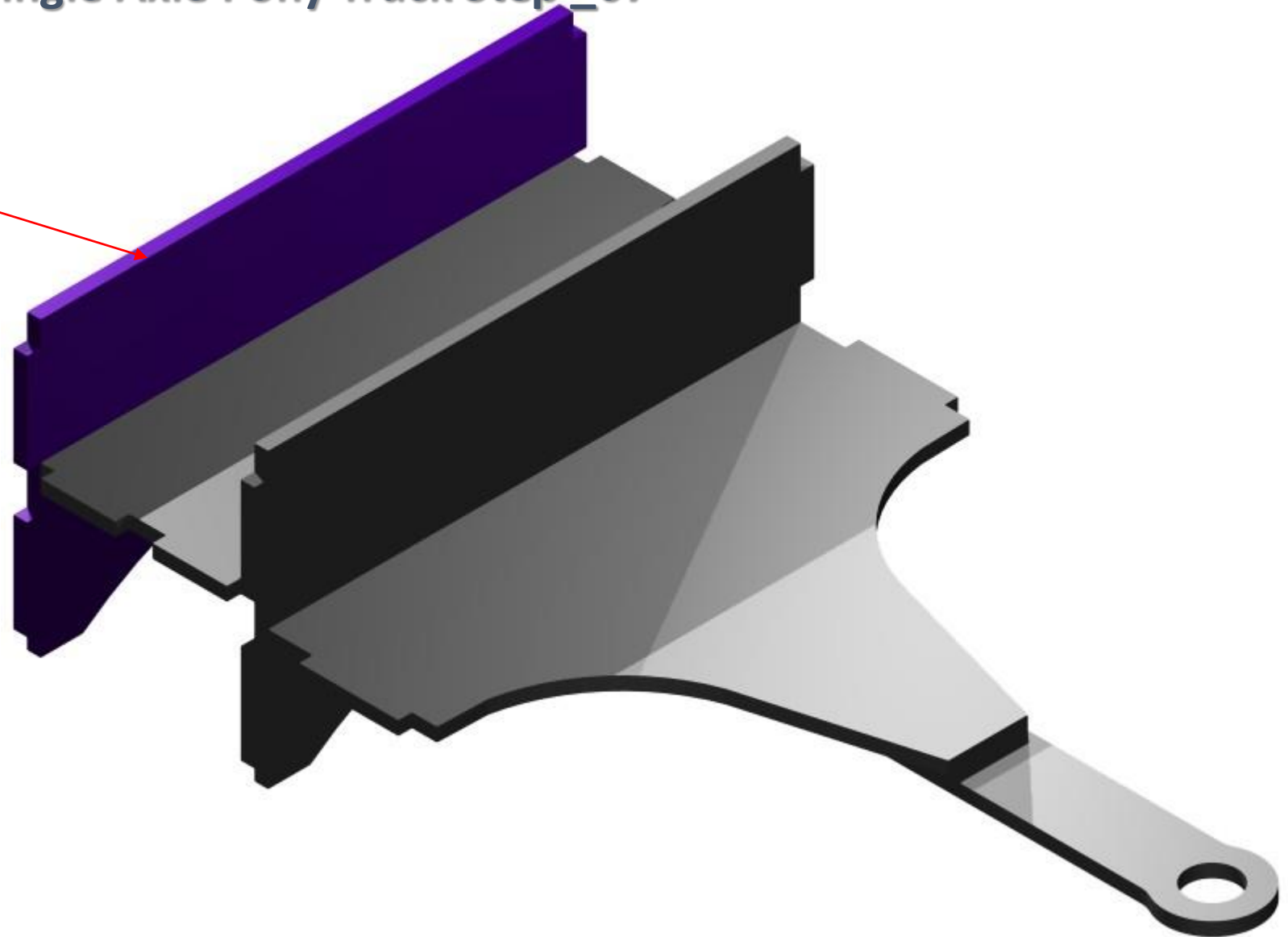


NSWGR Z20 7mm Tank Loco Kit

Single Axle Pony Truck Step _07

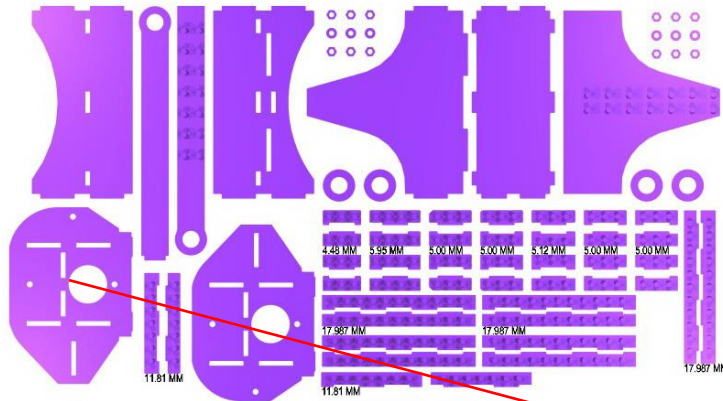


The Rear Plate can now be tack soldered into place, so that the side plates can locate every thing nice and square. Do make an effort to square up this plate as the sides will not fit if the plate is out of square.

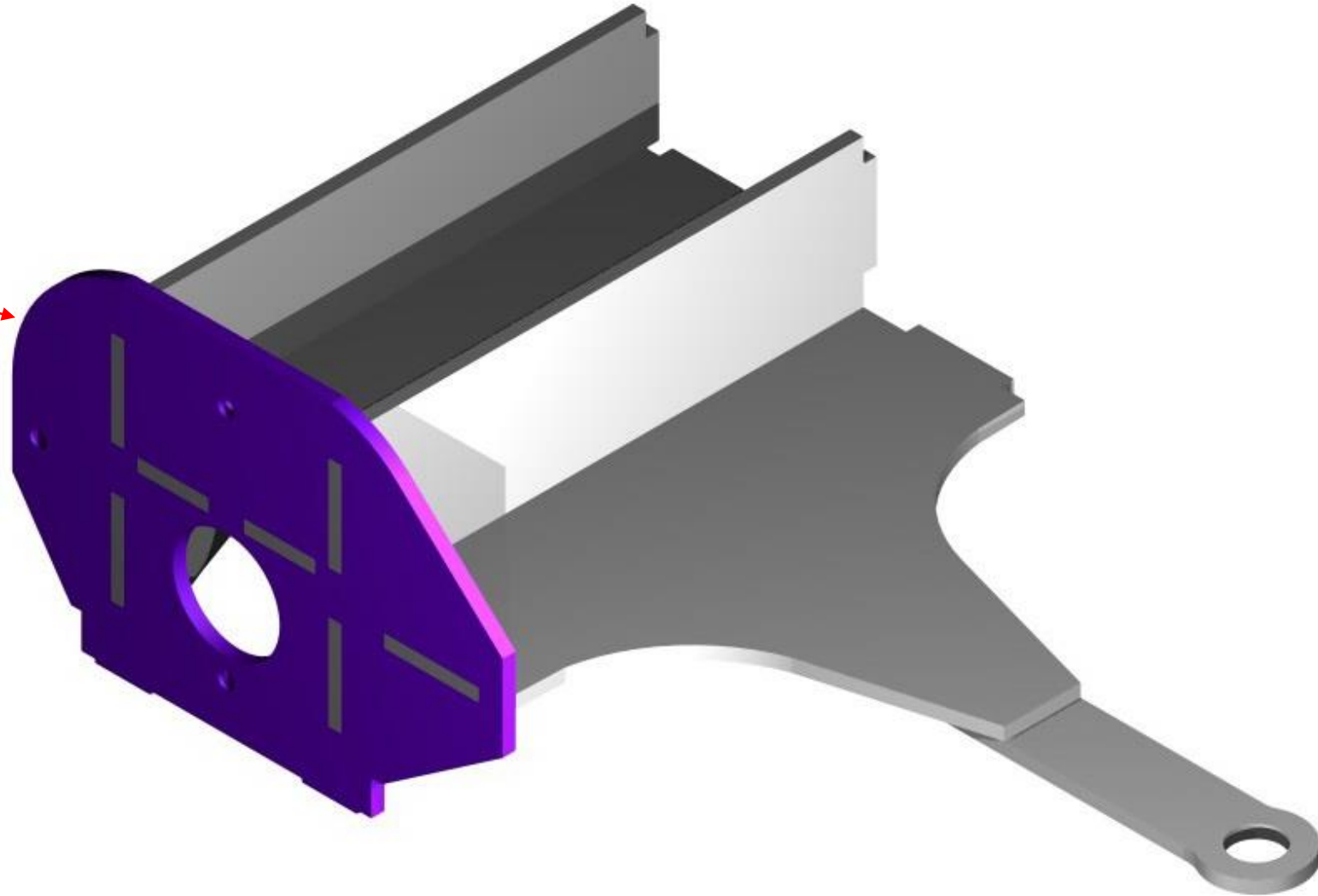


NSWGR Z20 7mm Tank Loco Kit

Single Axle Pony Truck Step _08

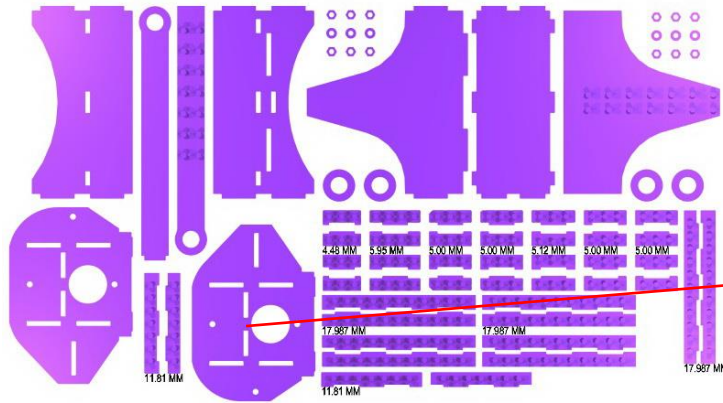


Now the first Sides is fitted, and with the number of tabs that locate into the Side, the parts should end up square. However, if your soldering is not up to scratch, this may not be the case. Consistently checking for square, will ensure a good job at the end of the day. There should be no gaps on the inside of the Sides.

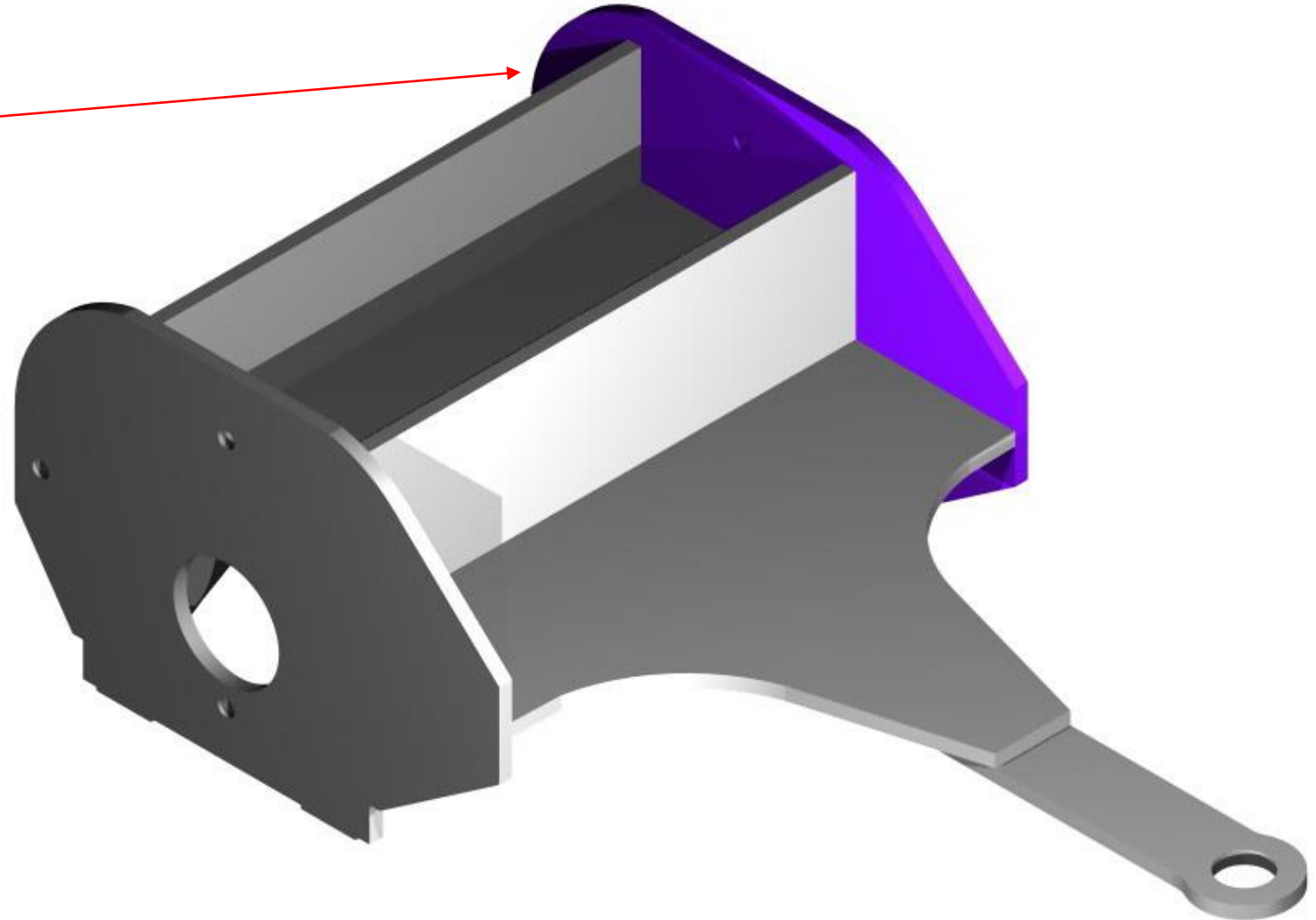


NSWGR Z20 7mm Tank Loco Kit

Single Axle Pony Truck Step _09

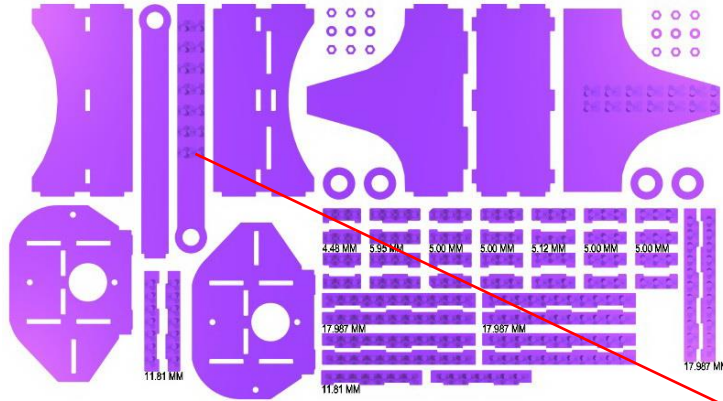


The other Side is now fitted and soldered into place. Using a micrometre or Vernier Gauge, check the width of this section once soldered into place.

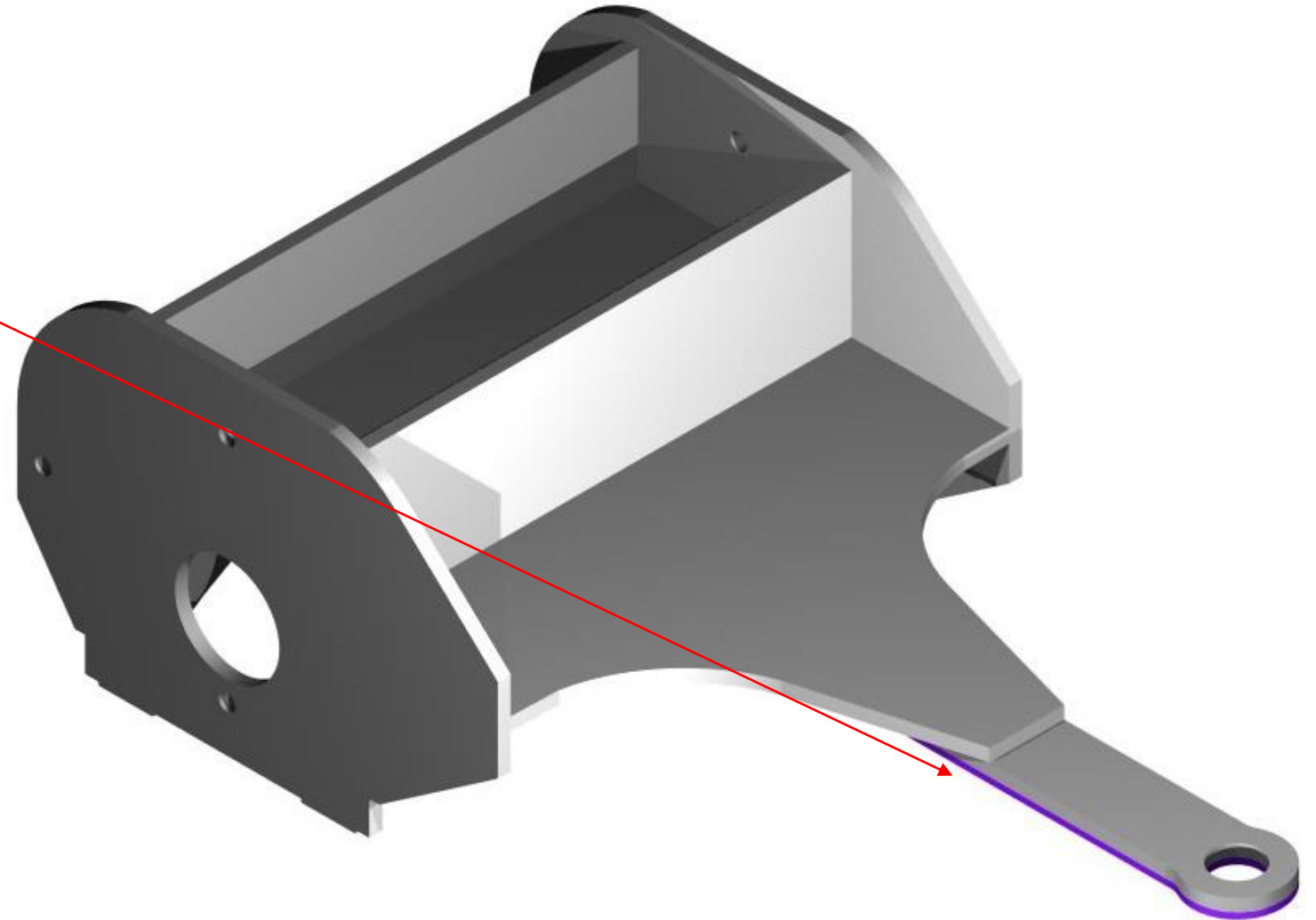


NSWGR Z20 7mm Tank Loco Kit

Single Axle Pony Truck Step _10

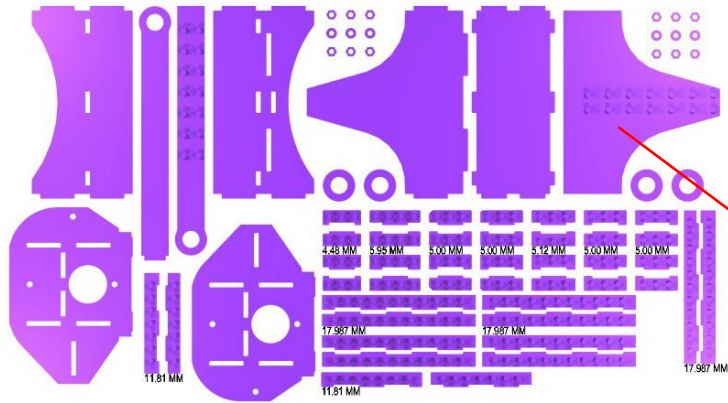


The Under Pivot Detail is fitted next. This part has two purposes, firstly to give rivet detail to the part and to strengthen the pivot plate, minimising any flex in the pony truck.

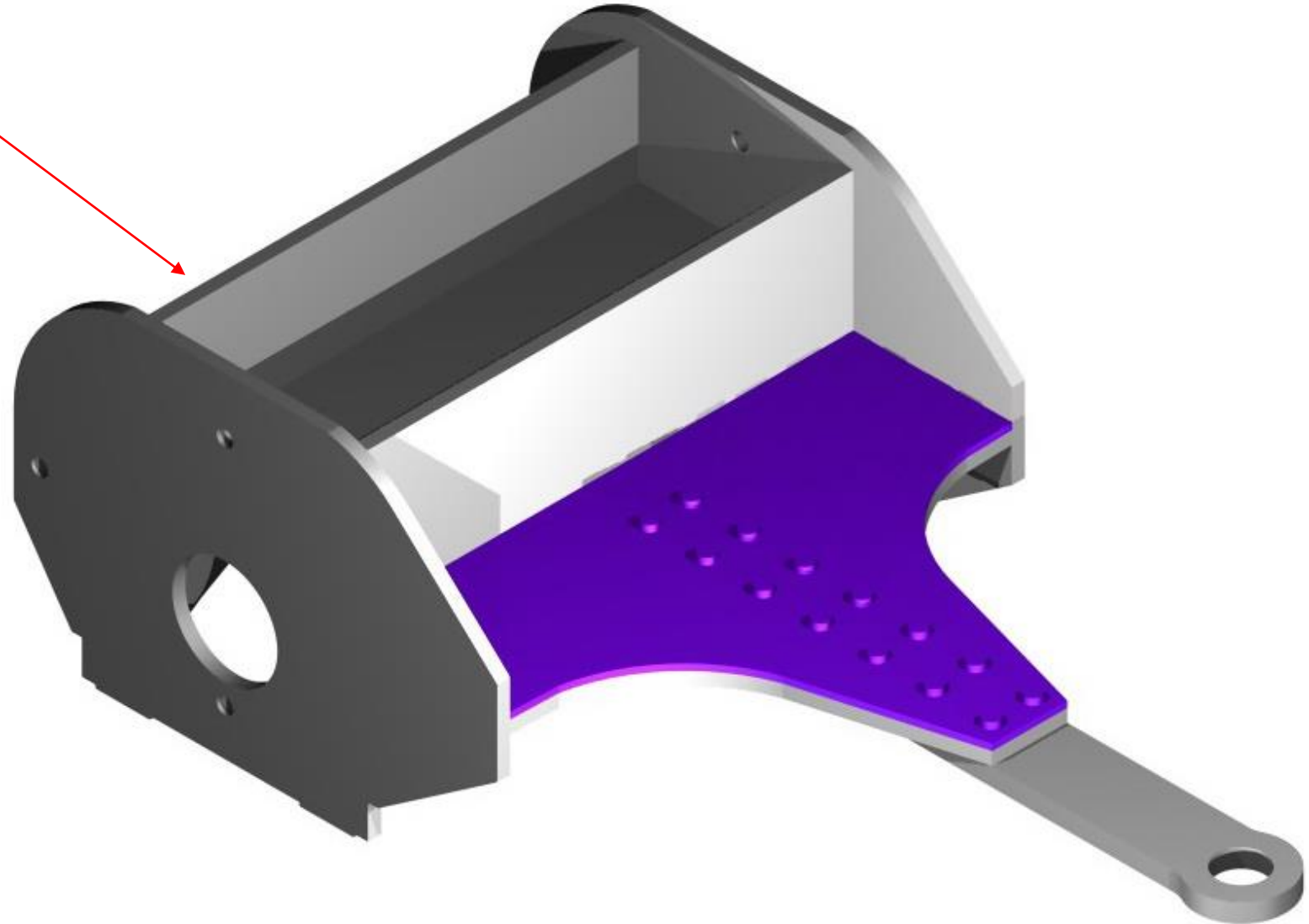


NSWGR Z20 7mm Tank Loco Kit

Single Axle Pony Truck Step _11

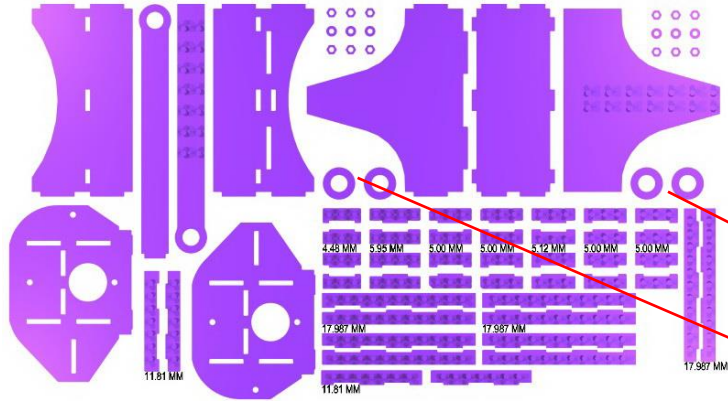


This part is similar to the previous part in that it provides, both rivet detail, and strength. There are no tabs to assist in fitting this part the part will need to be clamped with pegs and soldered into place, clean up with hot soapy water when complete.

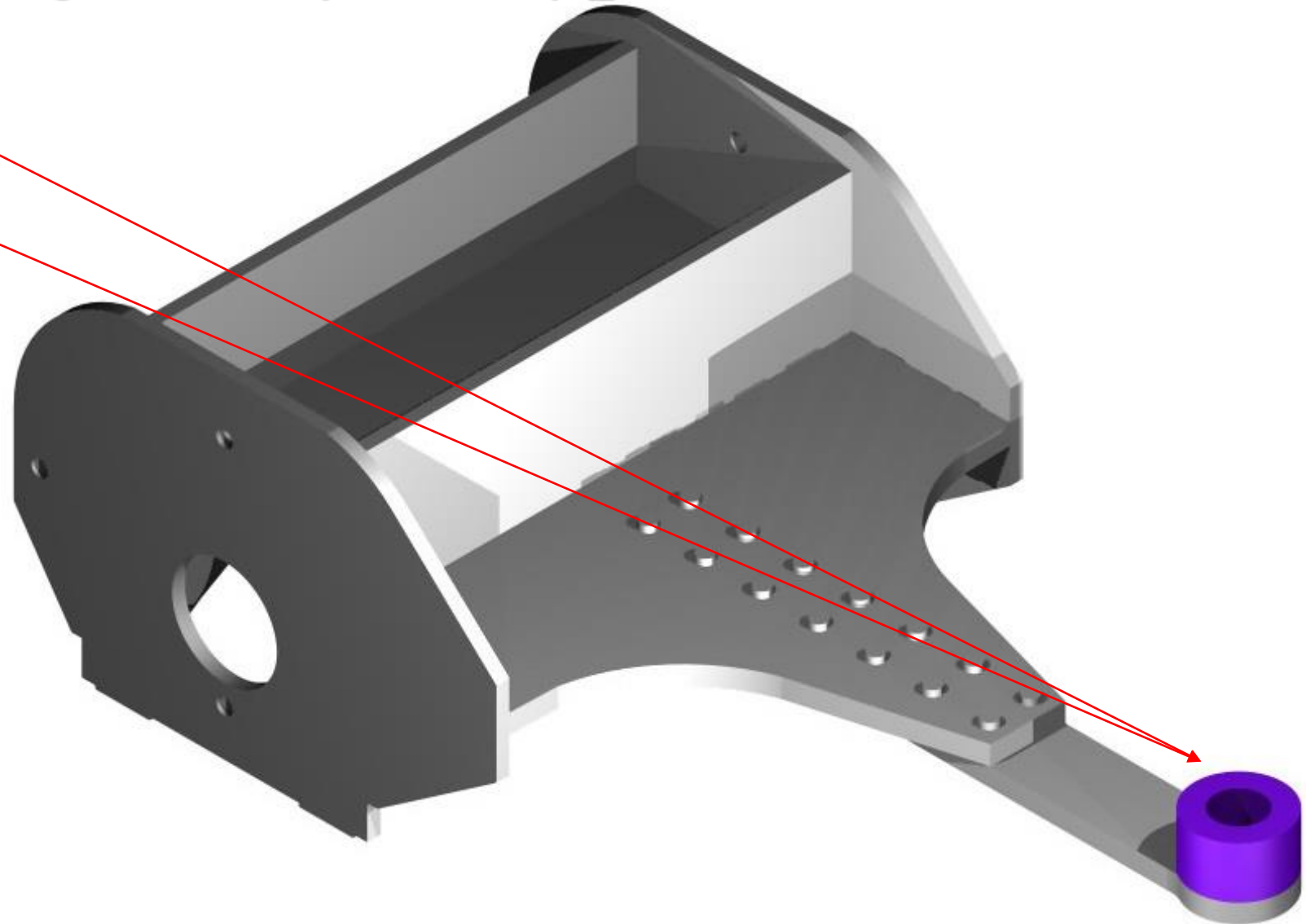


NSWGR Z20 7mm Tank Loco Kit

Single Axle Pony Truck Step _12

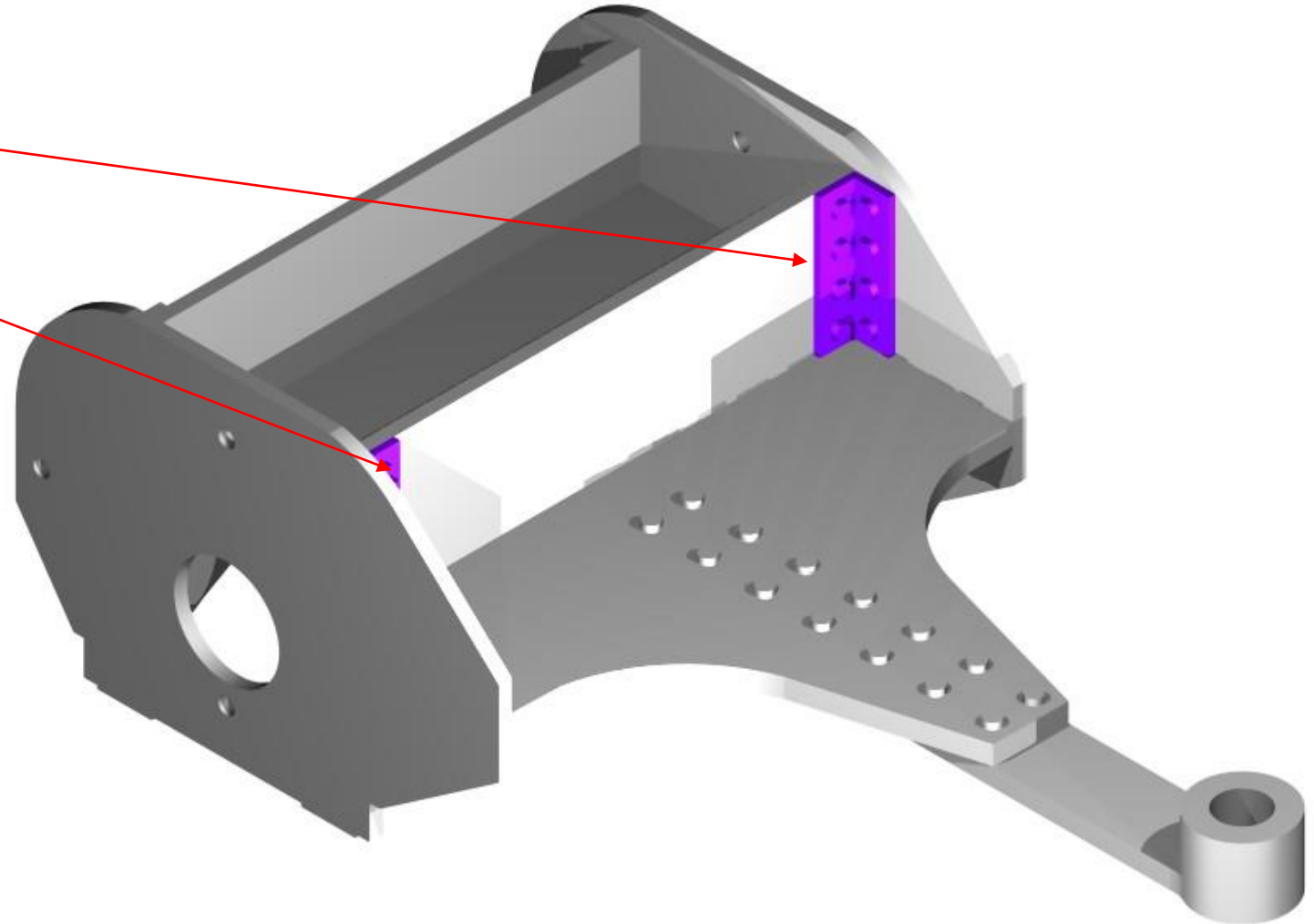
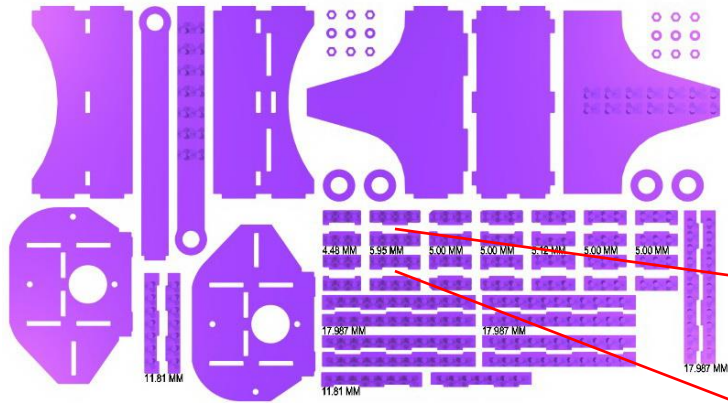


The rings are fitted to adjust the height of the pivot point, on the Pony truck, so you may need to adjust the number of rings to suit your particular Locomotive.



NSWGR Z20 7mm Tank Loco Kit

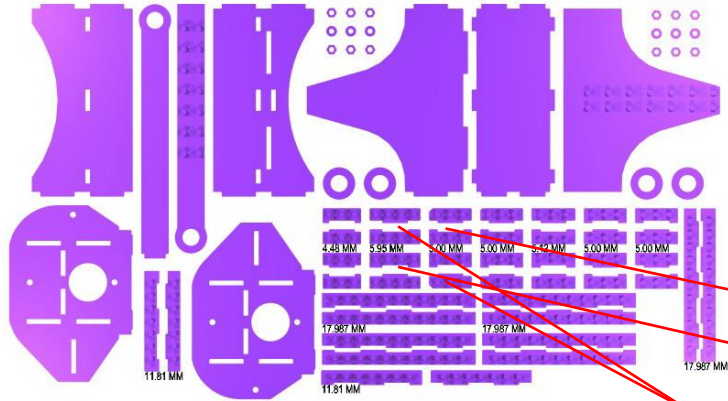
Single Axle Pony Truck Step _14



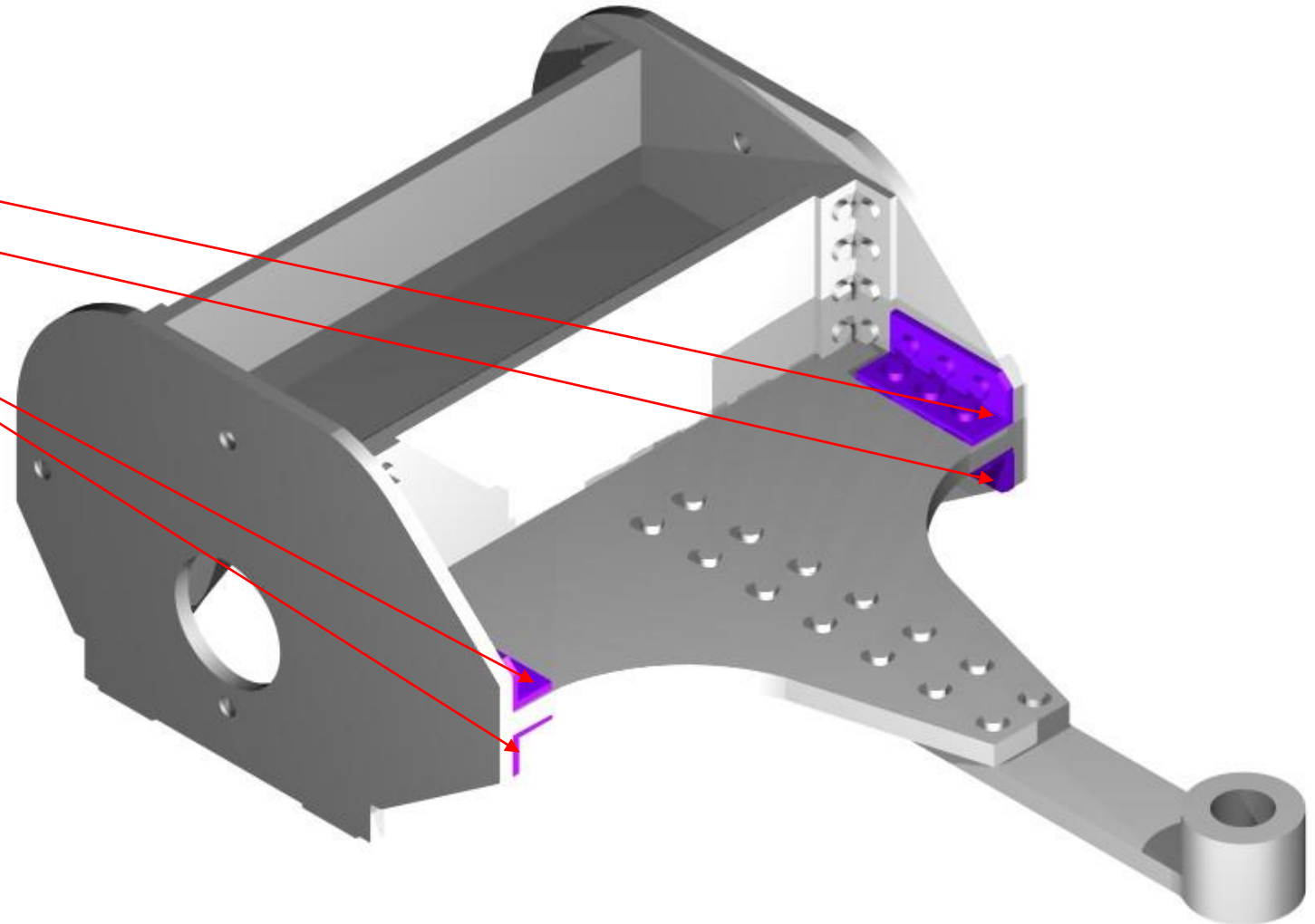
Please make sure that the indicated parts go into the correct location as all the angles are size to specifically fit the location. If you are concerned that soldering these parts into location that other parts may dislodge, you can use supa glue, but solder is the preferred option. Resistance soldering removes this problem.

NSWGR Z20 7mm Tank Loco Kit

Single Axle Pony Truck Step _15

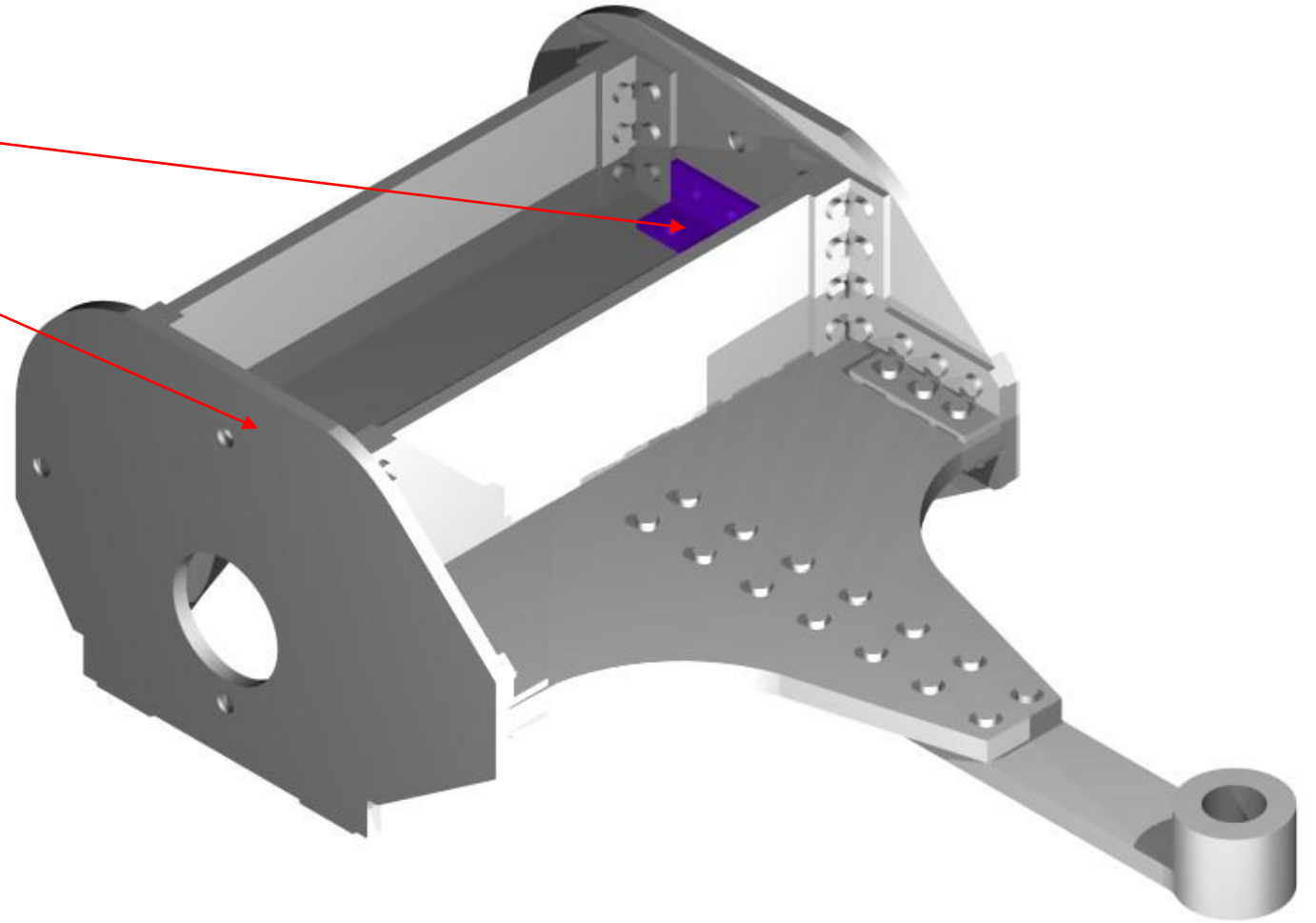
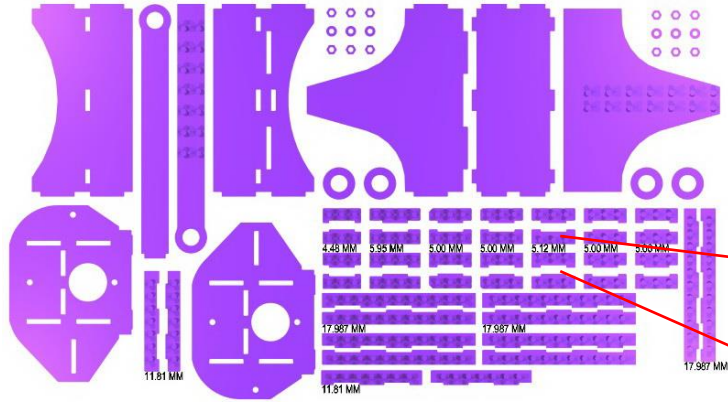


These riveted angels are specific, as they have a small bevel on the edge to conform with the shape of the sides. The top ones have a larger bevel than those below.



NSWGR Z20 7mm Tank Loco Kit

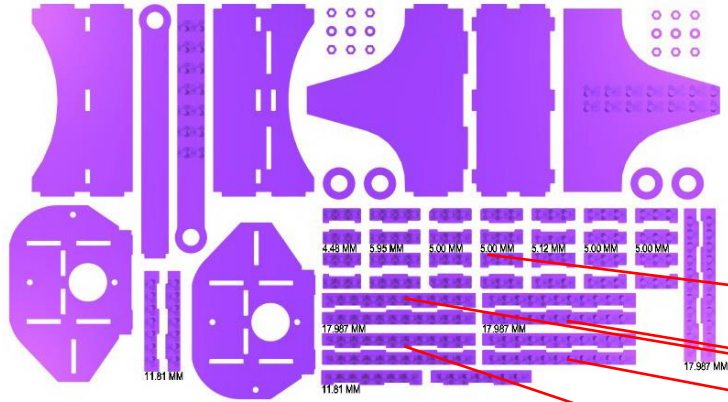
Single Axle Pony Truck Step _17



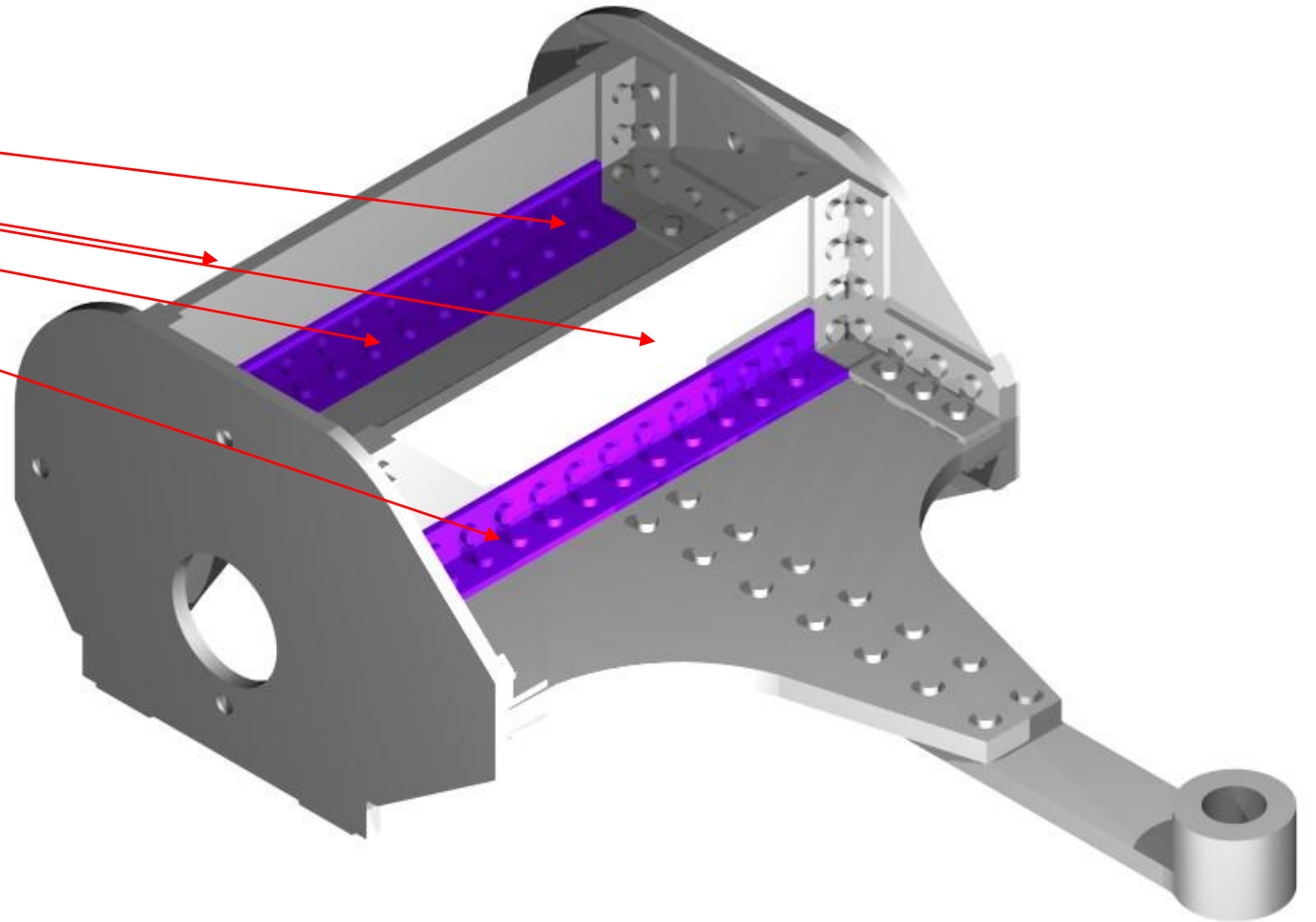
These angels are a specific size and fit between the previously constructed parts.

NSWGR Z20 7mm Tank Loco Kit

Single Axle Pony Truck Step _18

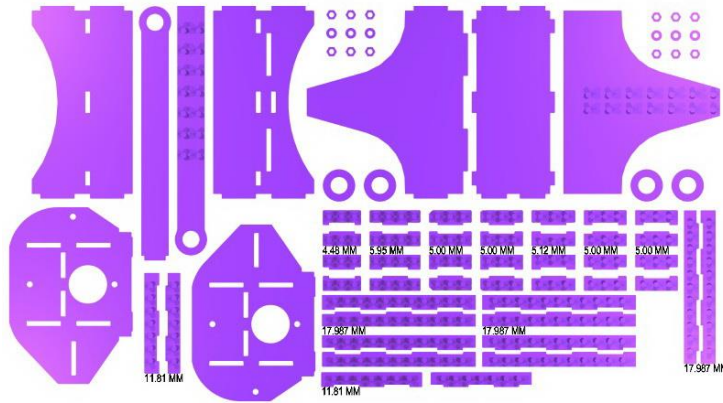


There are 5 angels with 2 of them under the centre plate

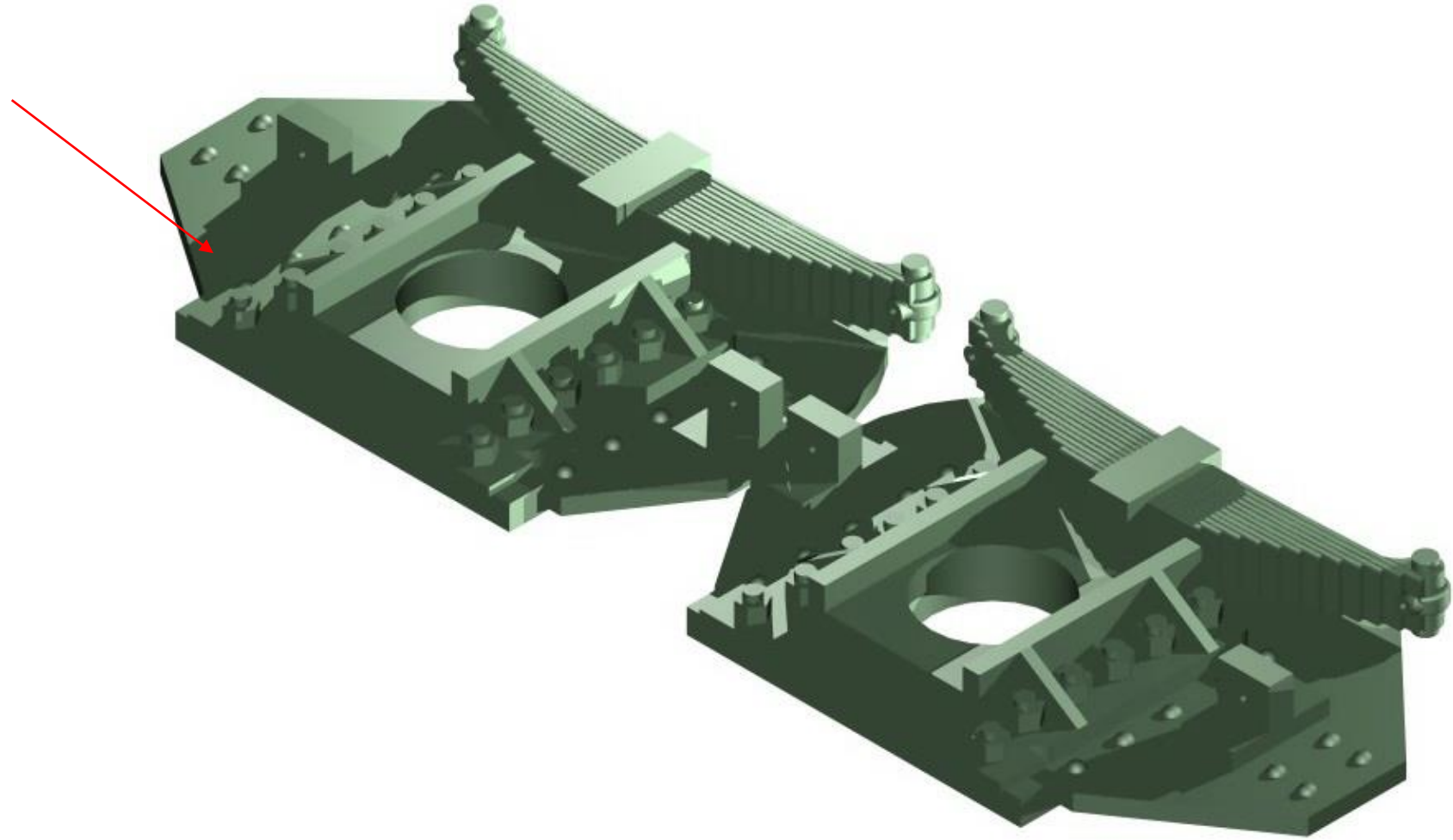


NSWGR Z20 7mm Tank Loco Kit

Single Axle Pony Truck Step _19

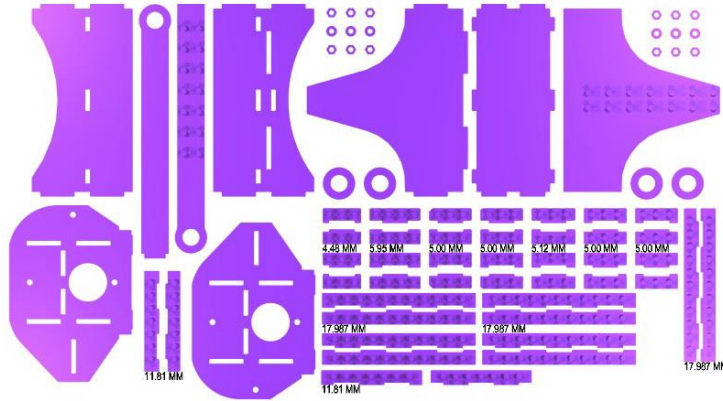


The detail pewter castings need to be fitted to the side plates. However there needs to be a little work done on these parts before they can be fitted. So lets start with that work.

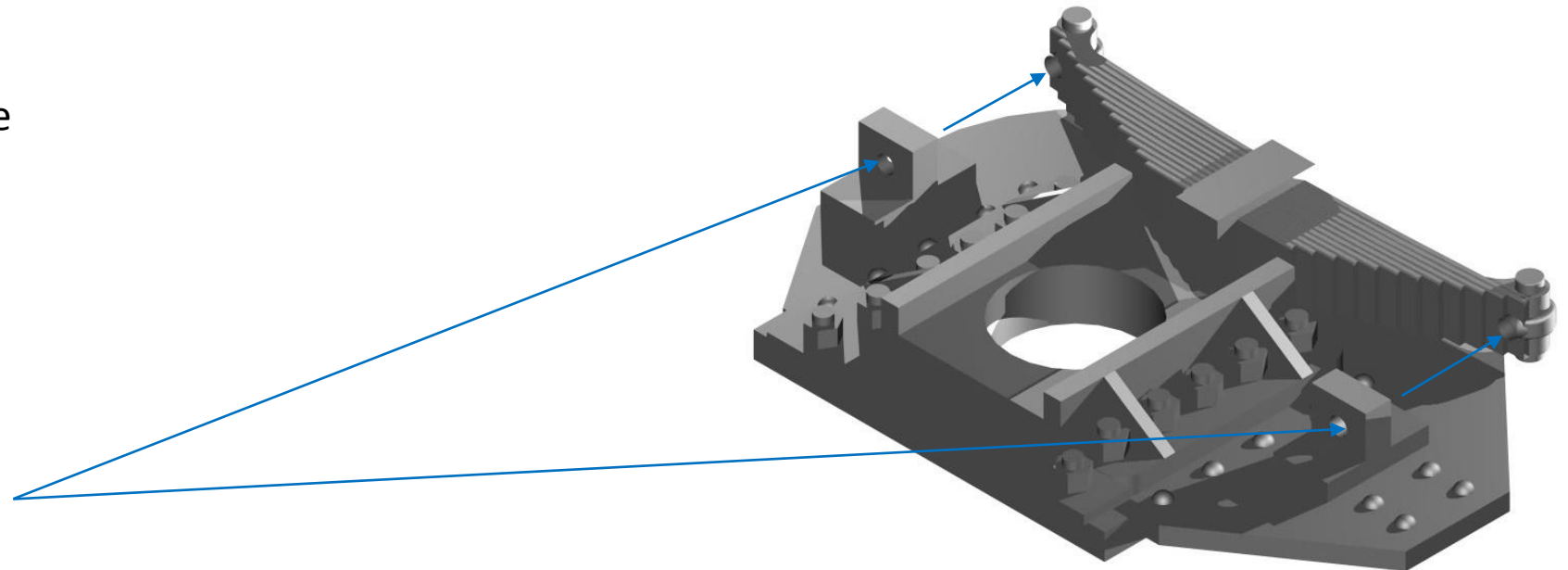
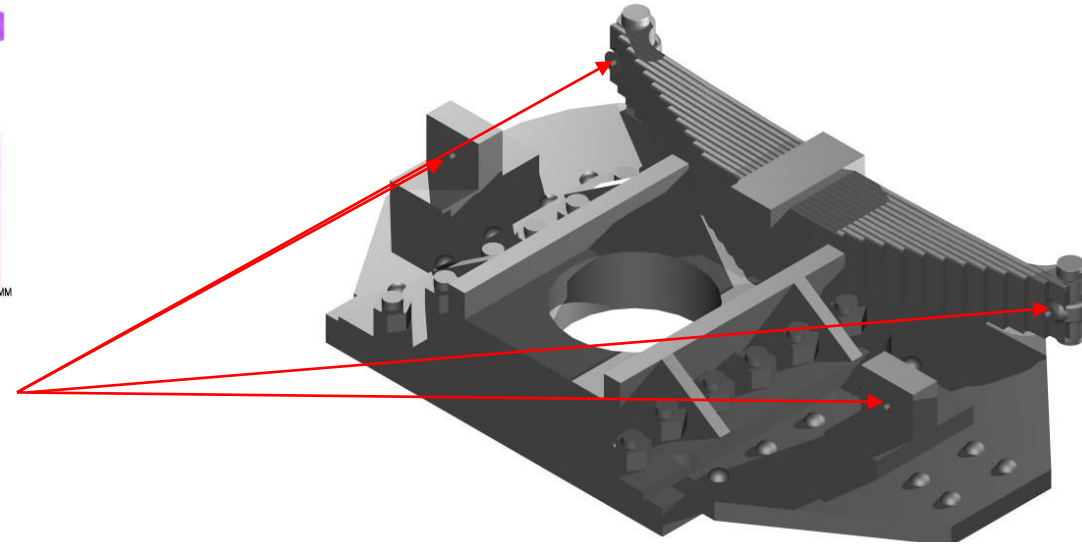


NSWGR Z20 7mm Tank Loco Kit

Single Axle Pony Truck Step _20

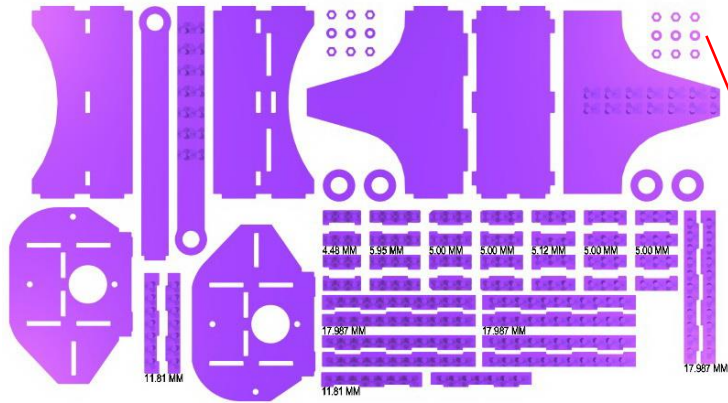


The castings have small dimples in them that have to be drilled to take a brass rod. These dimples are shown via the red arrows to the right. The brass rod that is fitted is 0.6 mm, so a 0.6 mm drill is used the drill out the casting to suit. The drill goes through the outrigger block on both side of the casting and then into each end of the spring. Take care when doing this work as the holes need to be accurate and aligned correctly. The blue arrows show the drill locations.

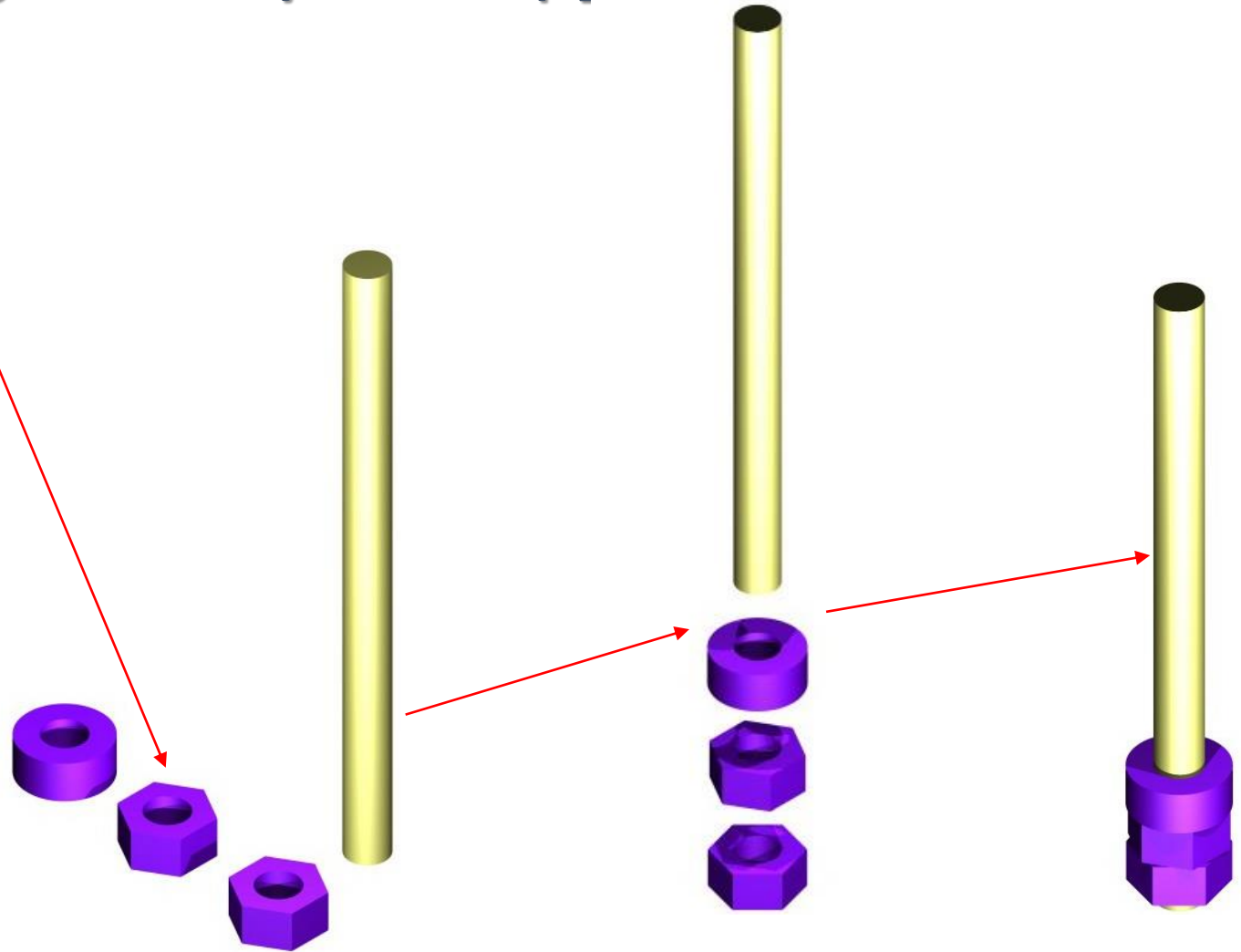


NSWGR Z20 7mm Tank Loco Kit

Single Axle Pony Truck Step _21

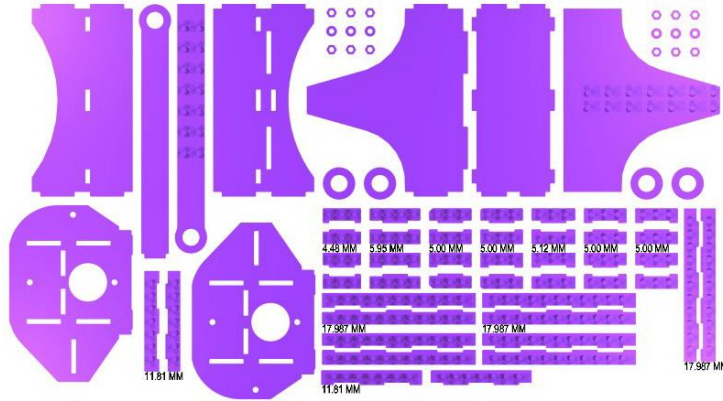


The following instructions are to assist in finishing the detailing of the pewter side frame castings. The nuts and washers are from the etch and as you should notice there are more than required. The wire is 0.6 mm brass rod and you will need 4 pieces at 8.6 mm long. The washer and 2 nuts are mounted onto the rod with the washer sitting at about 2.9 mm from the base of the rod.

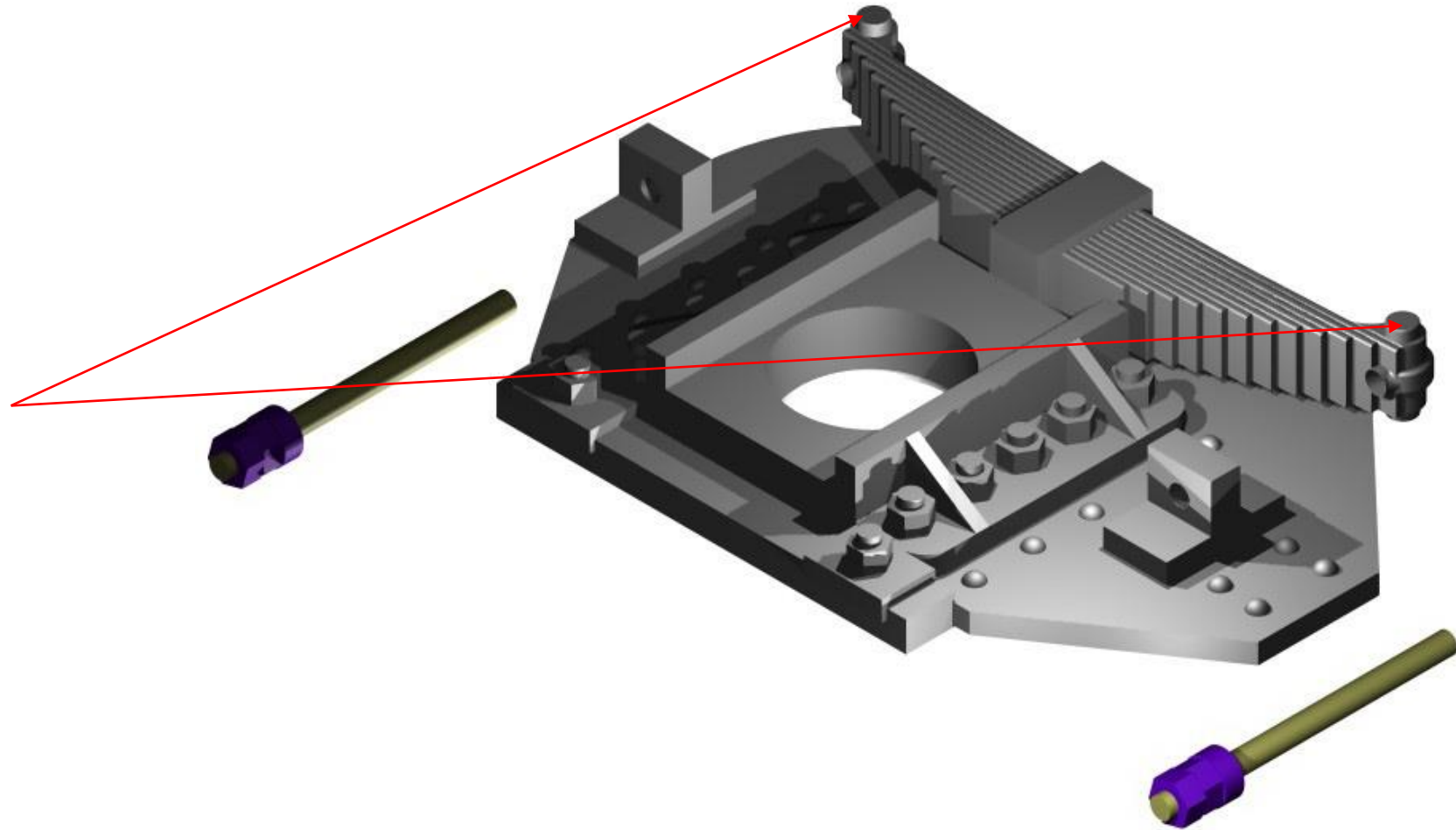


NSWGR Z20 7mm Tank Loco Kit

Single Axle Pony Truck Step _22

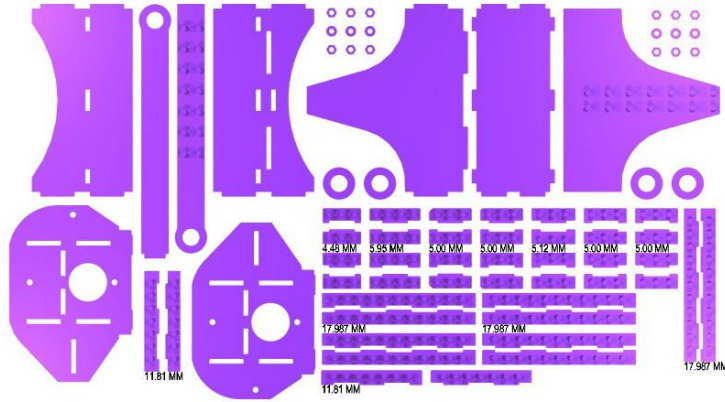


One the etched washes and nuts are soldered to the wire (2.9 mm from the base) and the castings have been drill to approximately half way through the pivot bolt on the springs. You can fit and secure the etches and rods. They can be glued or soldered, but do make sure that you use the correct solder , iron and flux when soldering brass to pewter.

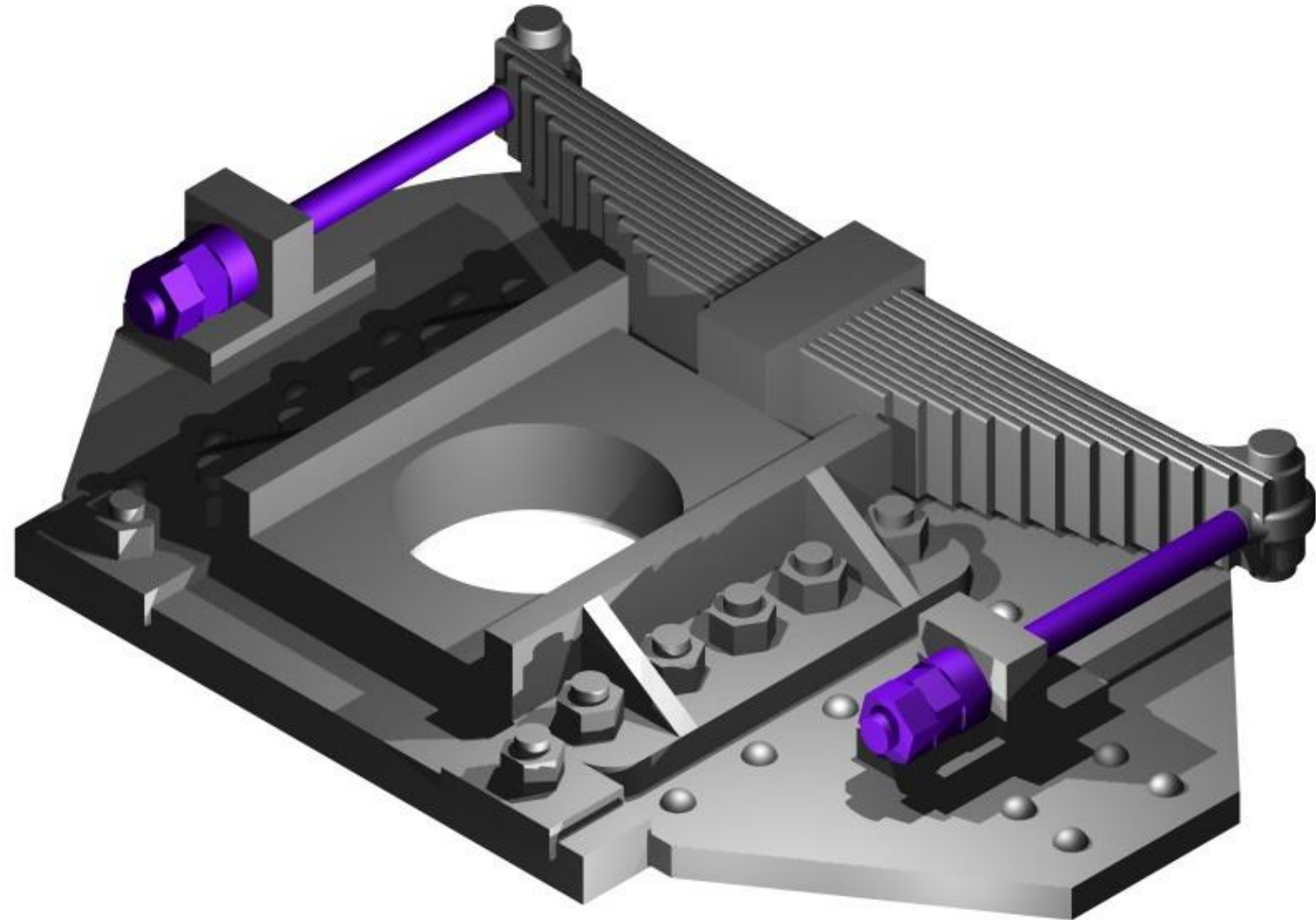


NSWGR Z20 7mm Tank Loco Kit

Single Axle Pony Truck Step _23

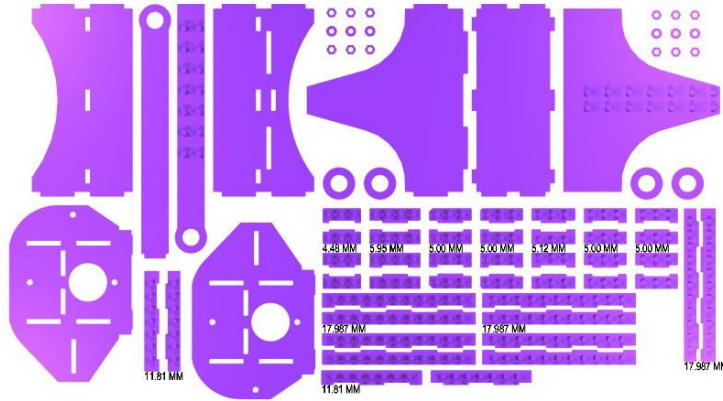


Once the rod and etches were secured to the side frame castings. It is time to fit the casting.

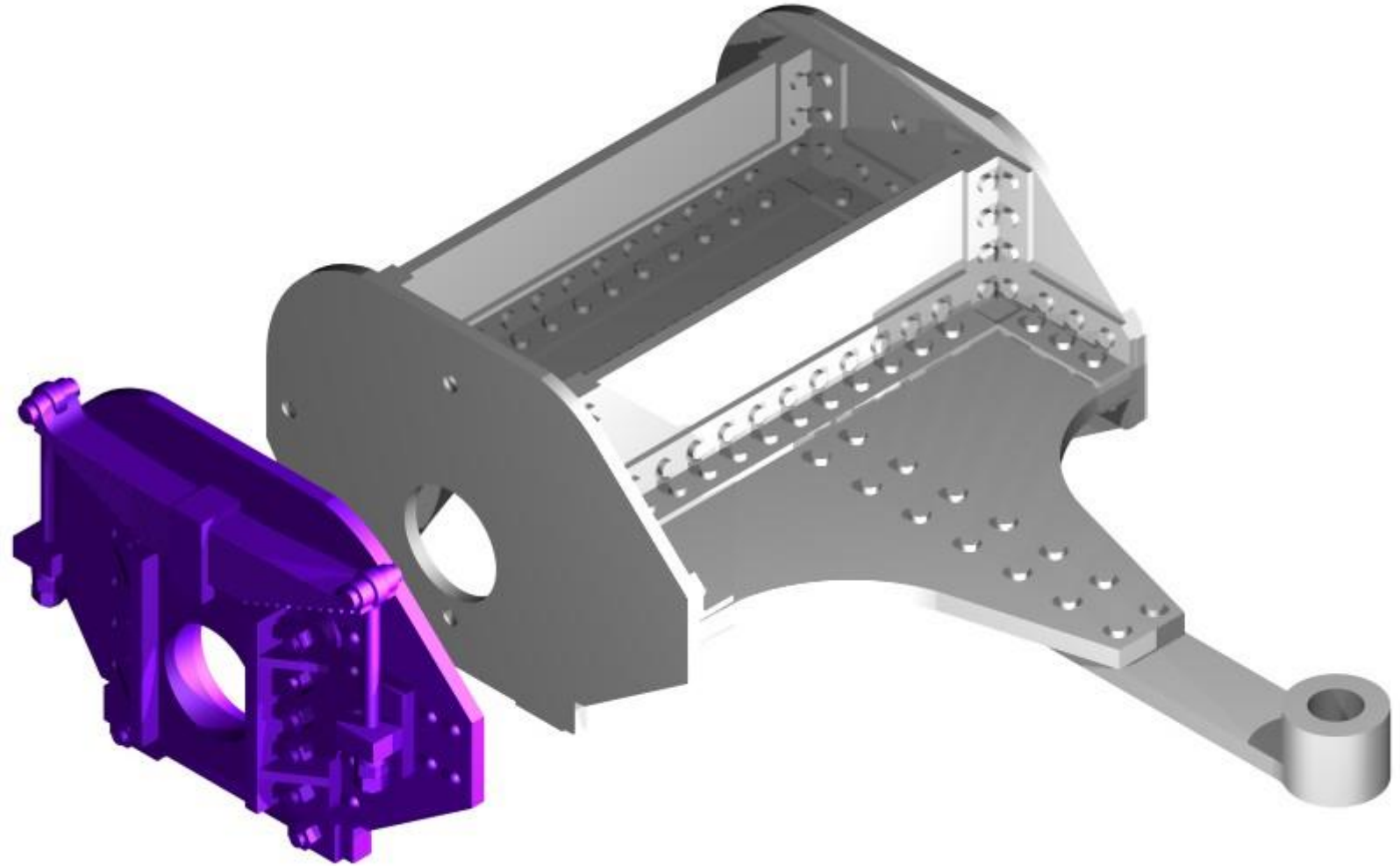


NSWGR Z20 7mm Tank Loco Kit

Single Axle Pony Truck Step _24

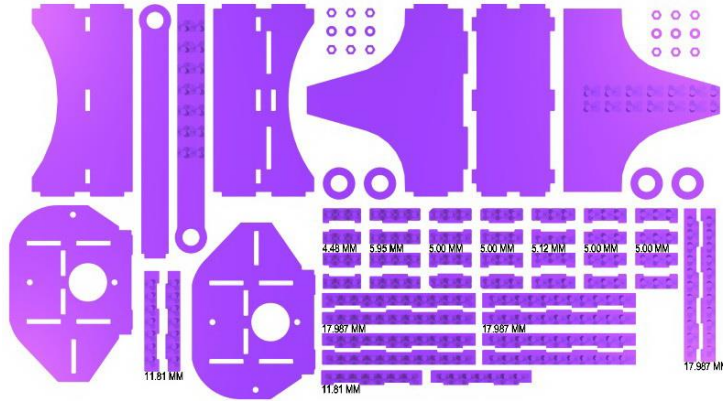


The castings may need to be cleaned up to remove any flash, so be careful not to remove any detail when removing the flash.

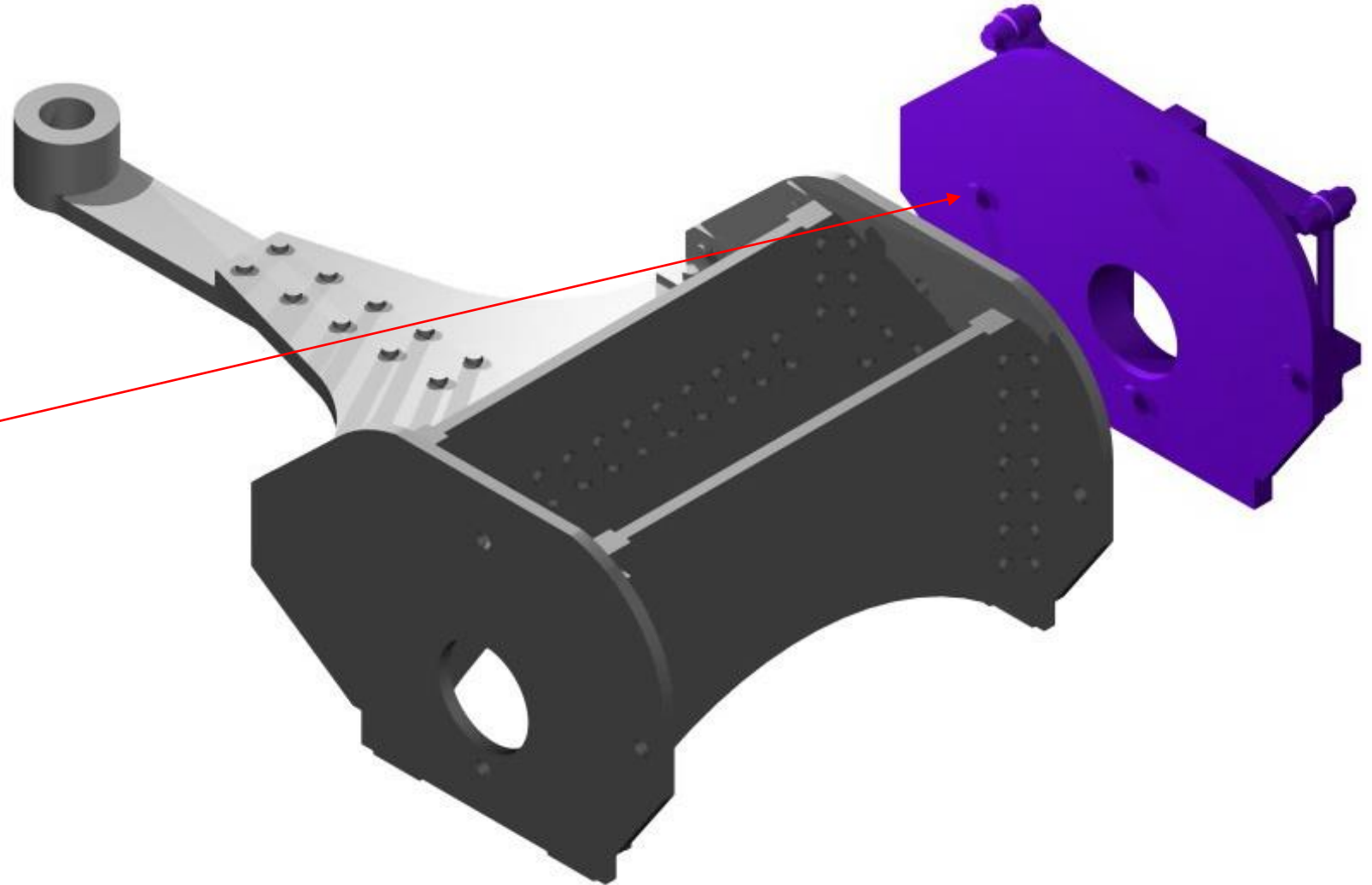


NSWGR Z20 7mm Tank Loco Kit

Single Axle Pony Truck Step _25

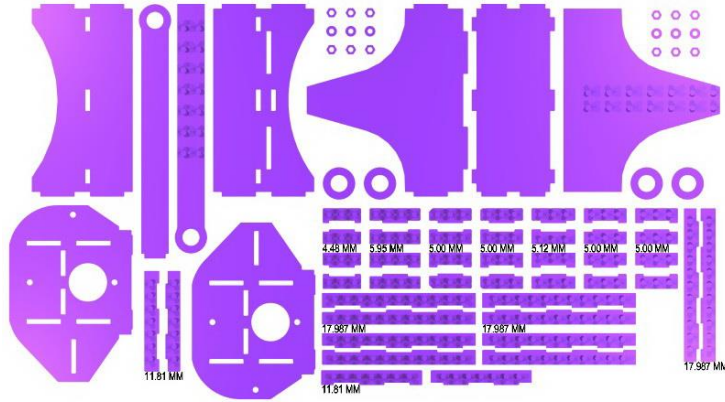


The castings is located onto the etched pony truck by the used of locating pins, there are 4 pins , however the front pin needs to removed due to a modification done to the etch.

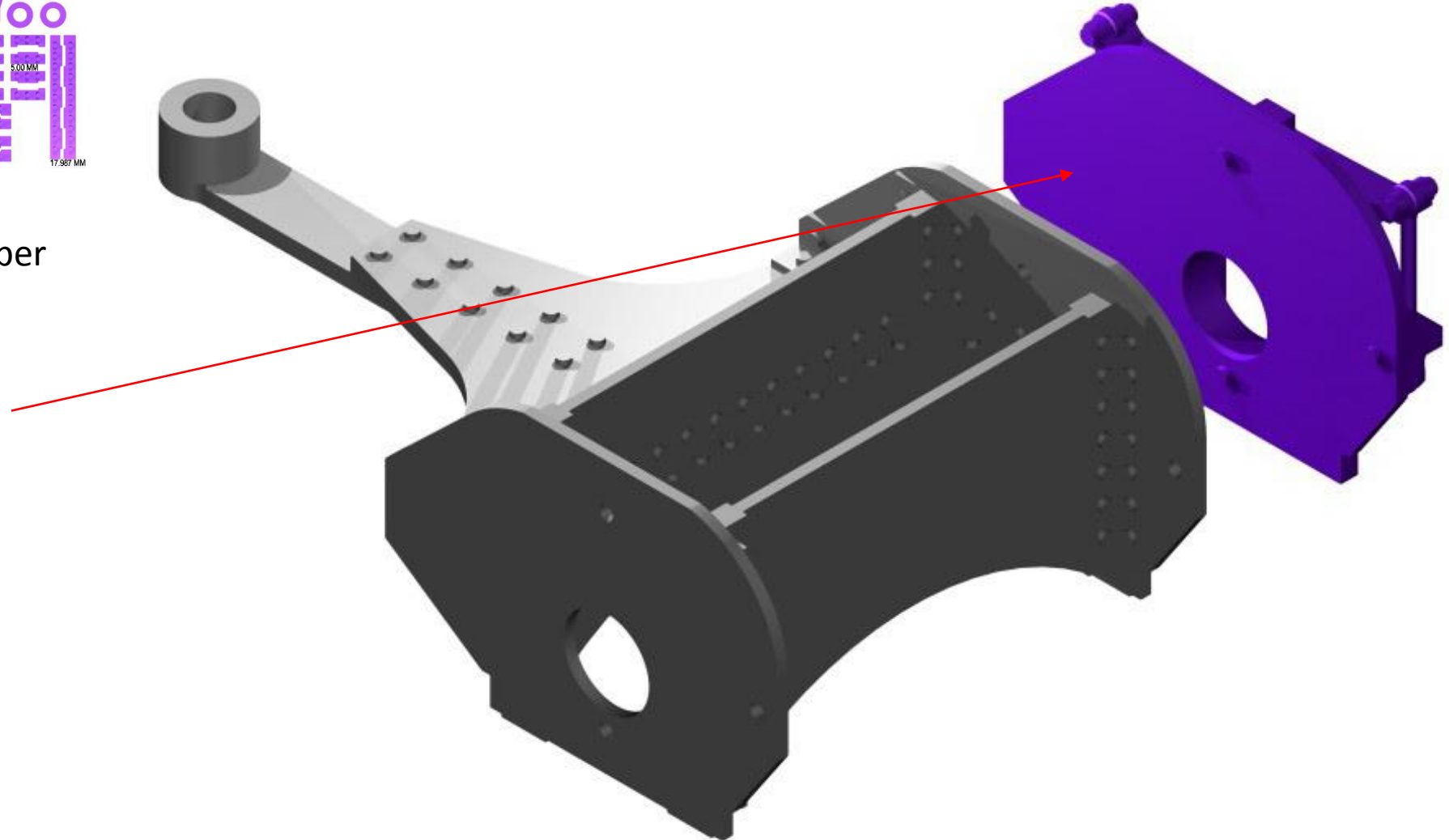


NSWGR Z20 7mm Tank Loco Kit

Single Axle Pony Truck Step _27

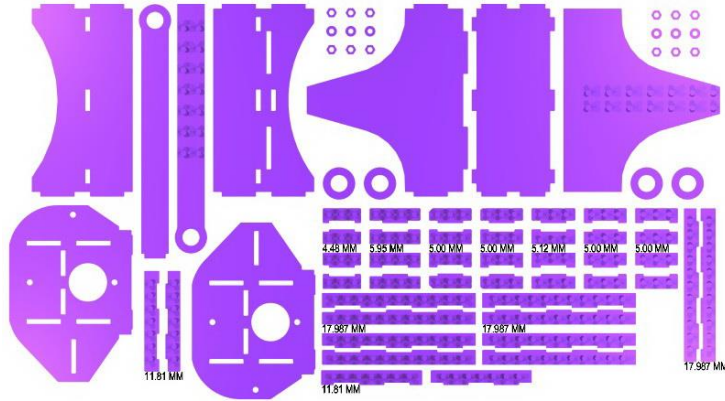


The pin needs to be sanded off as per the image to the right.

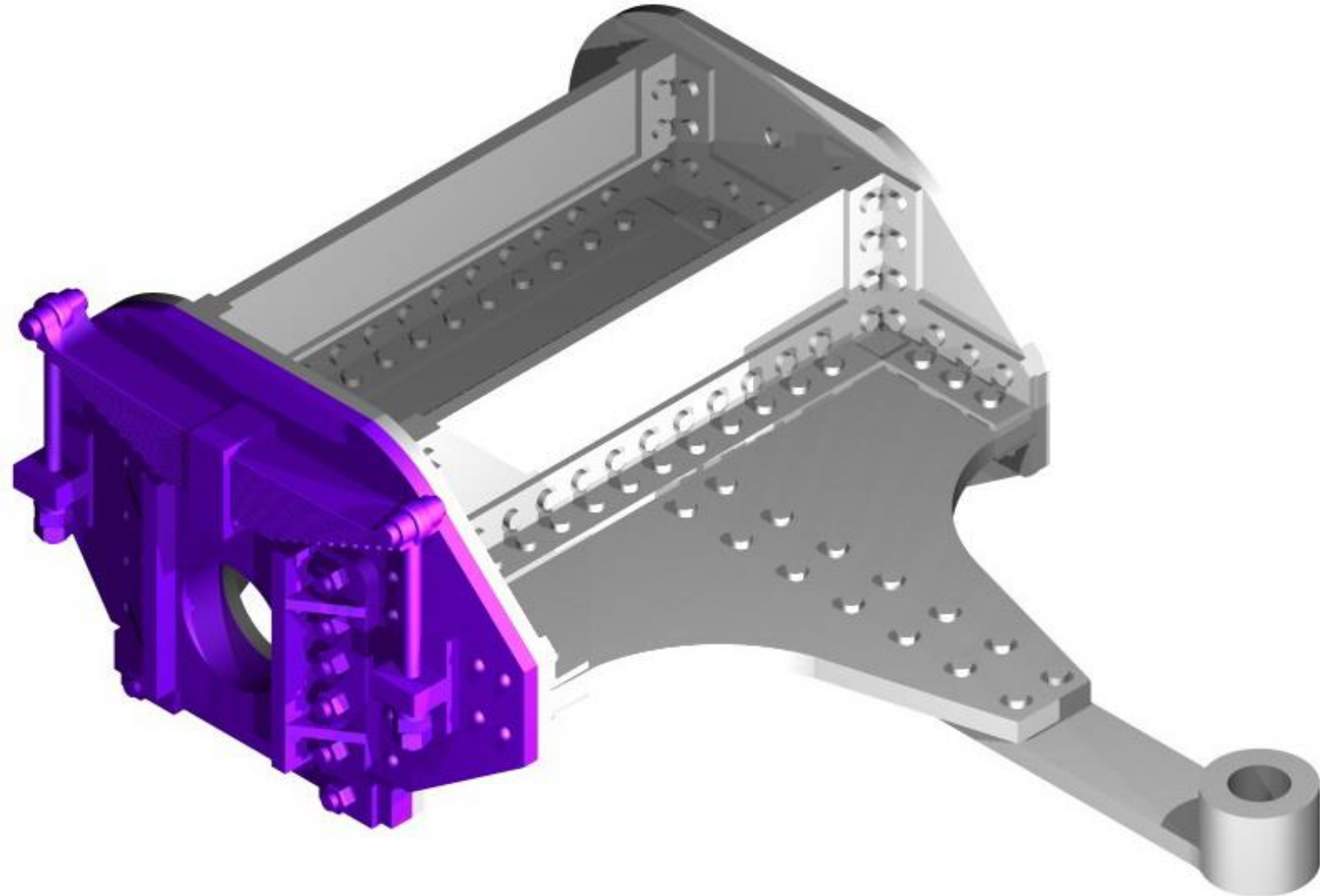


NSWGR Z20 7mm Tank Loco Kit

Single Axle Pony Truck Step _28

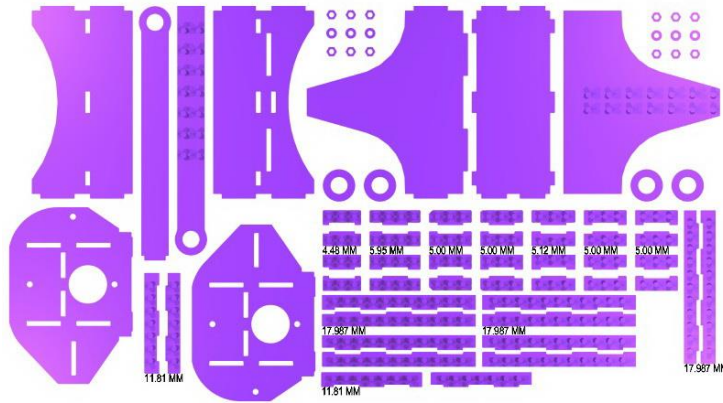


The casting is secured to the etching by either gluing or soldering . Soldering is the preferred option, but it would depend on you skills.

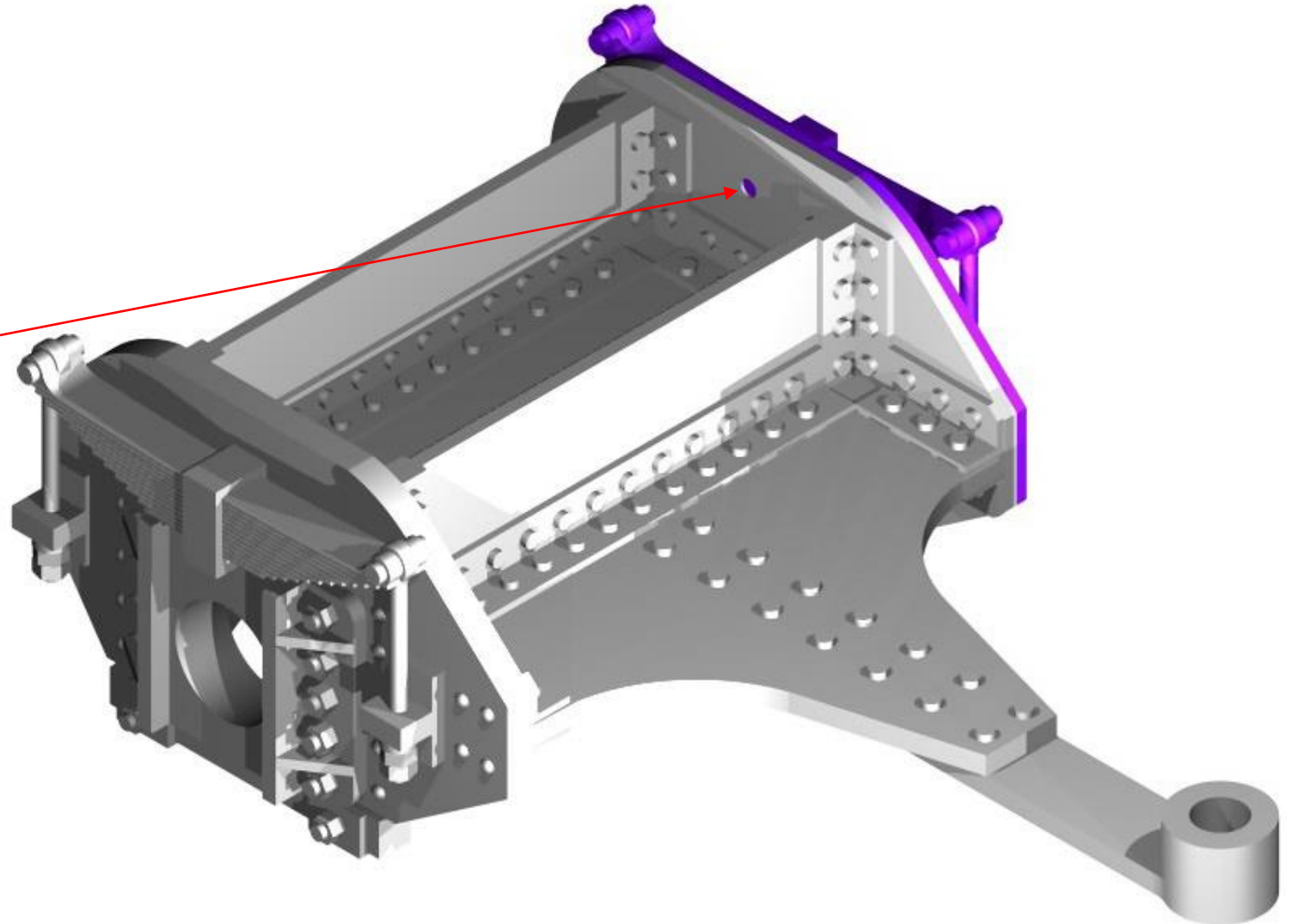


NSWGR Z20 7mm Tank Loco Kit

Single Axle Pony Truck Step _29

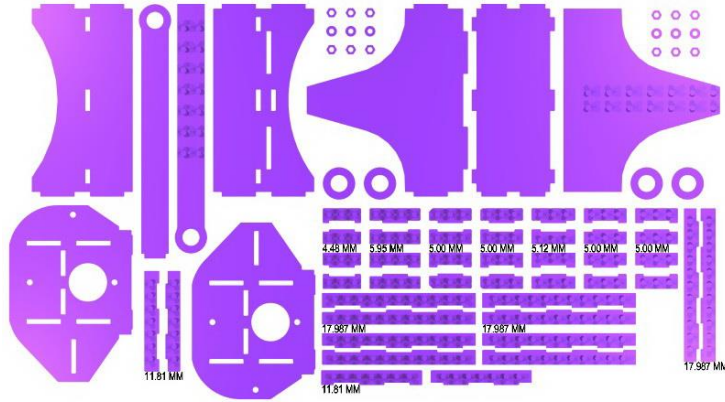


As can be seen on the right where the casting attaches to the etching the pin is poking through.

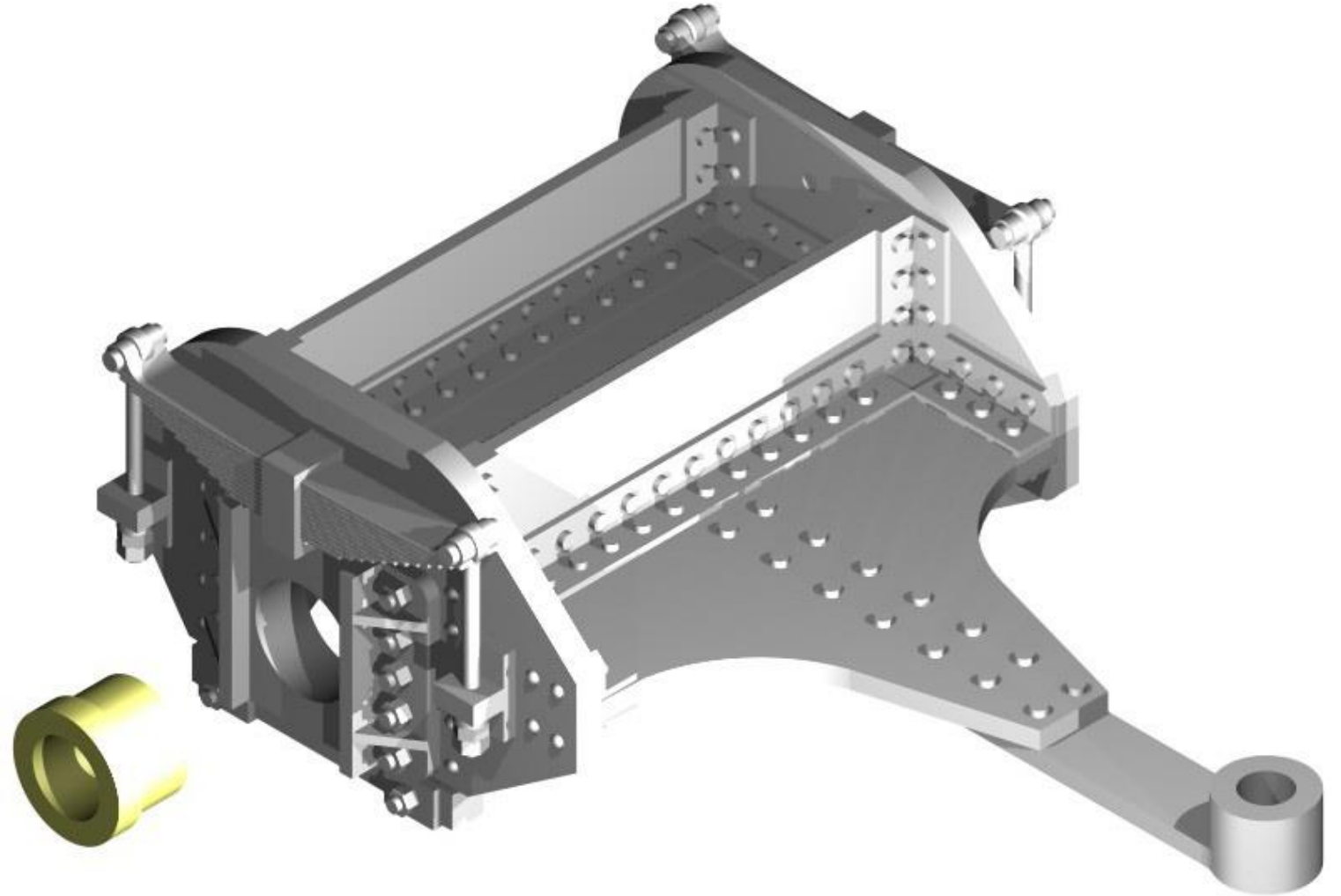


NSWGR Z20 7mm Tank Loco Kit

Single Axle Pony Truck Step _30

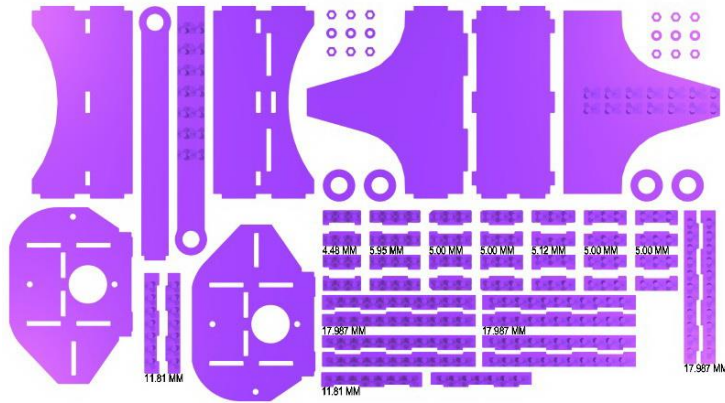


The bearings are the same for both pony trucks, as the parts have been designed to suit the same brass bearing.

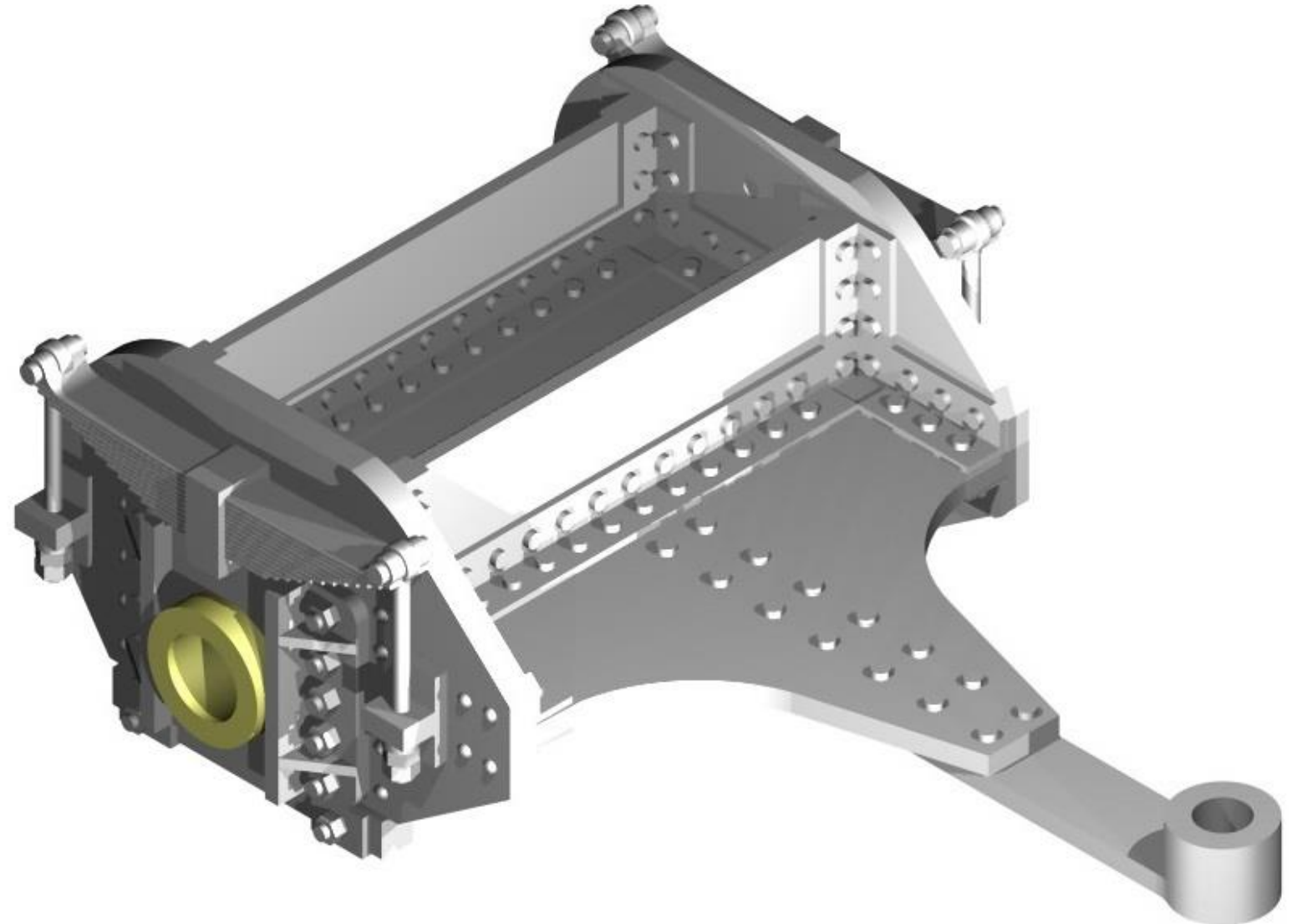


NSWGR Z20 7mm Tank Loco Kit

Single Axle Pony Truck Step _31

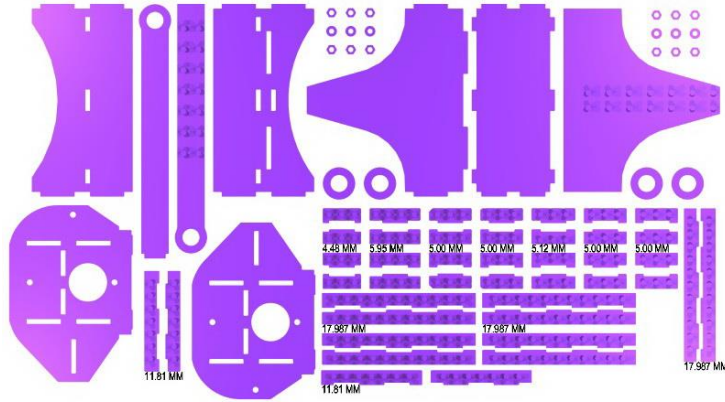


Once the bearings are located and secured in place, it is time to fit the axle and wheels.

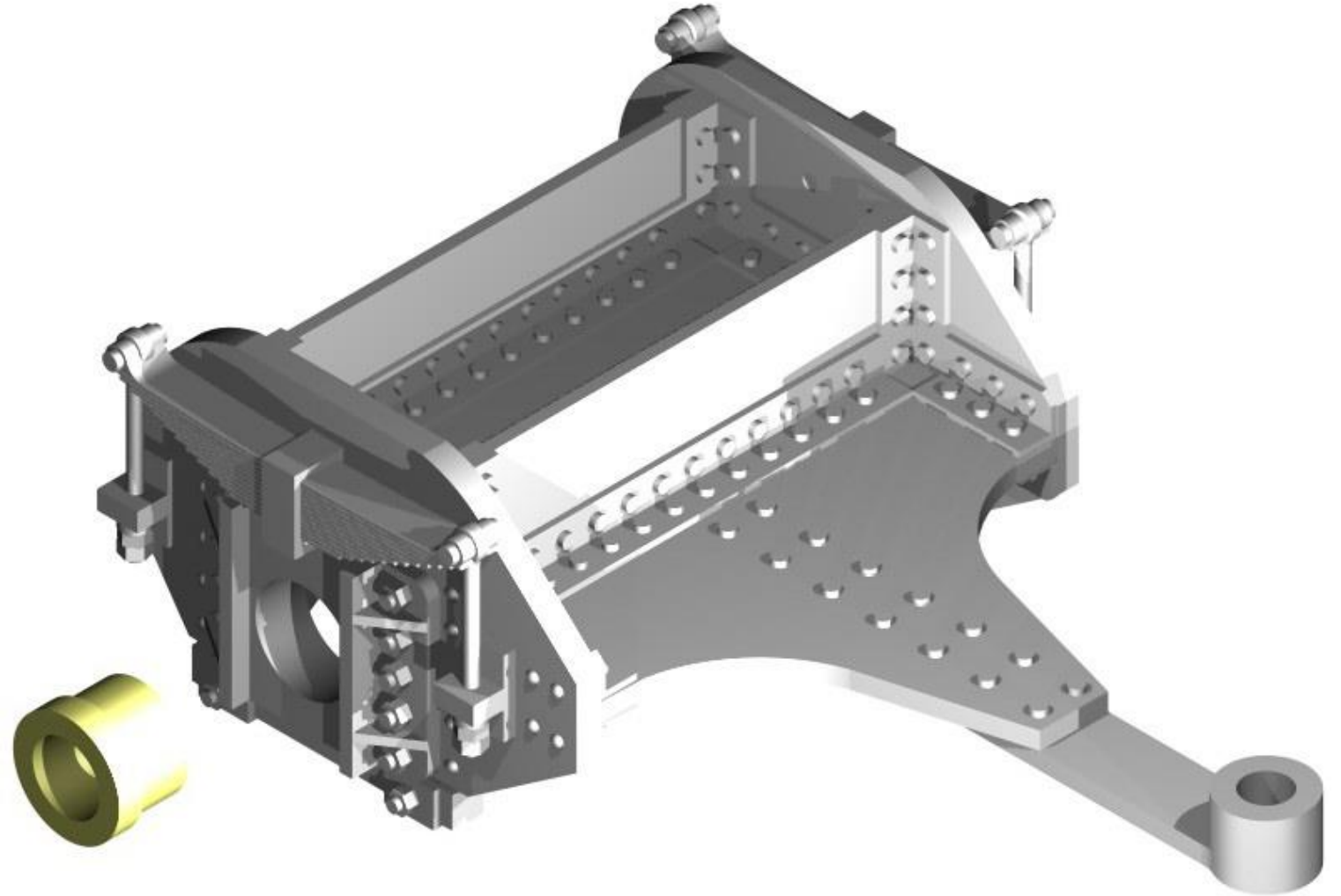


NSWGR Z20 7mm Tank Loco Kit

Single Axle Pony Truck Step _32

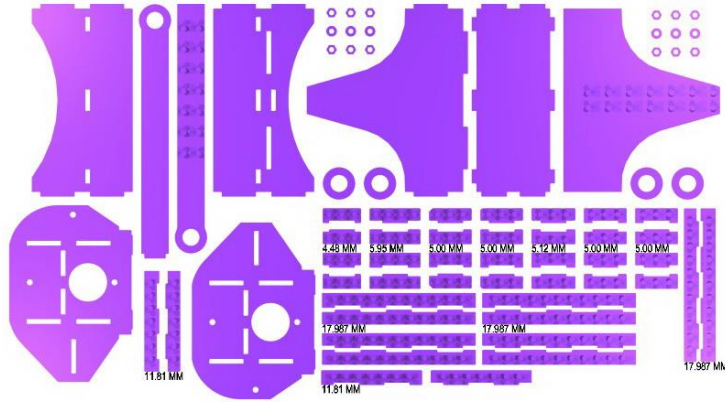


The bearings are the same for both pony trucks, as the parts have been designed to suit the same brass bearing.

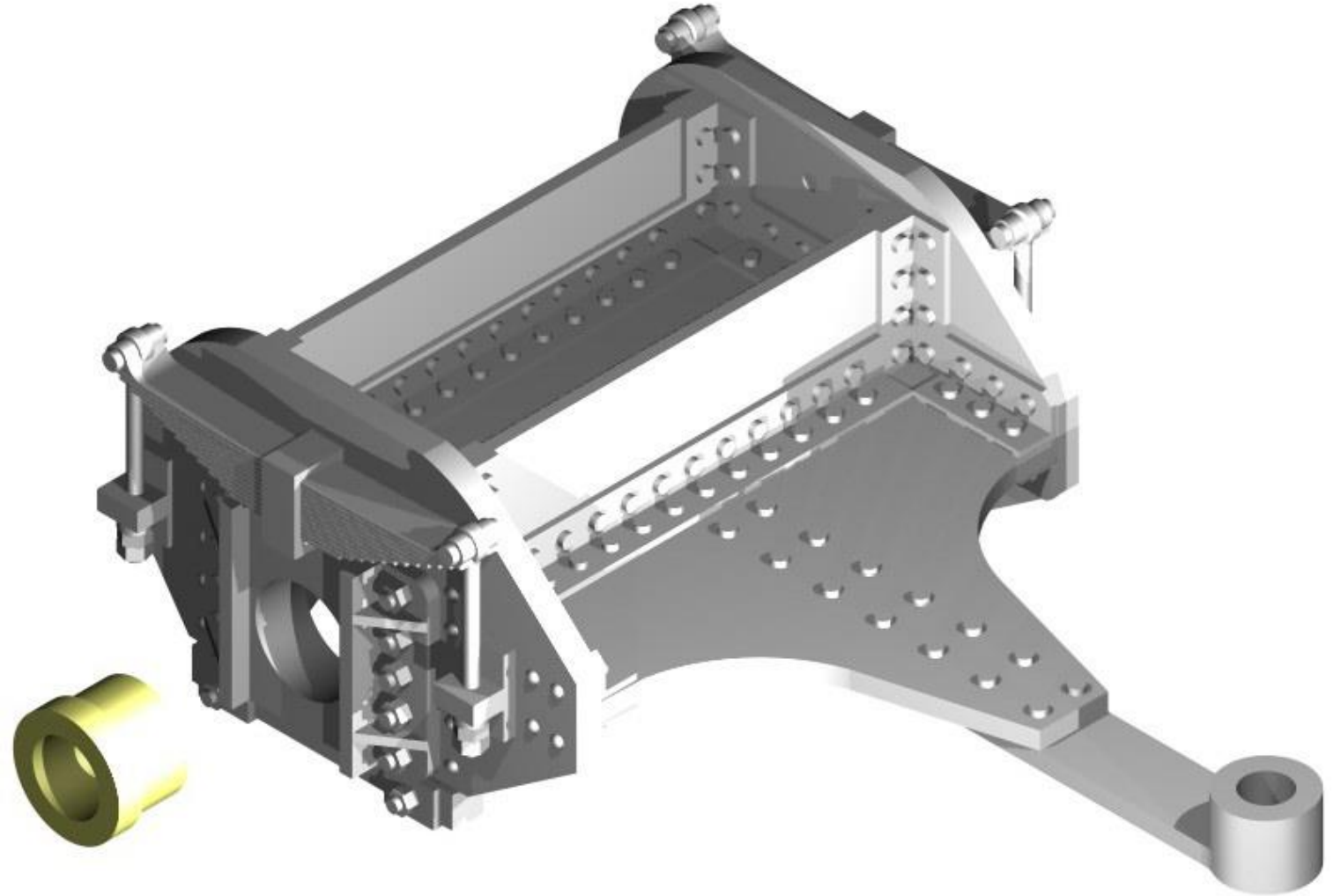


NSWGR Z20 7mm Tank Loco Kit

Single Axle Pony Truck Step _33

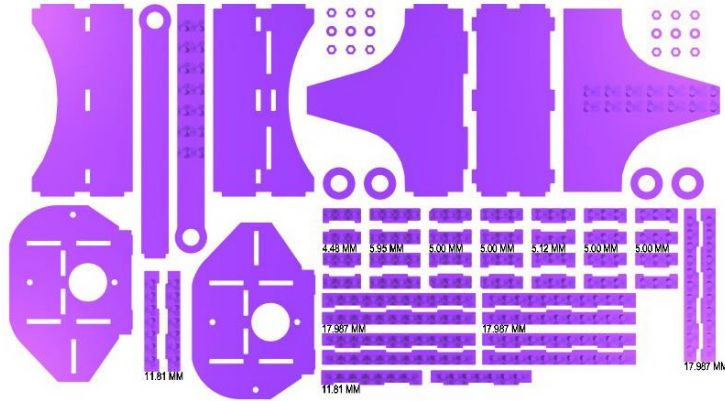


The bearings are the same for both pony trucks, as the parts have been designed to suit the same brass bearing.

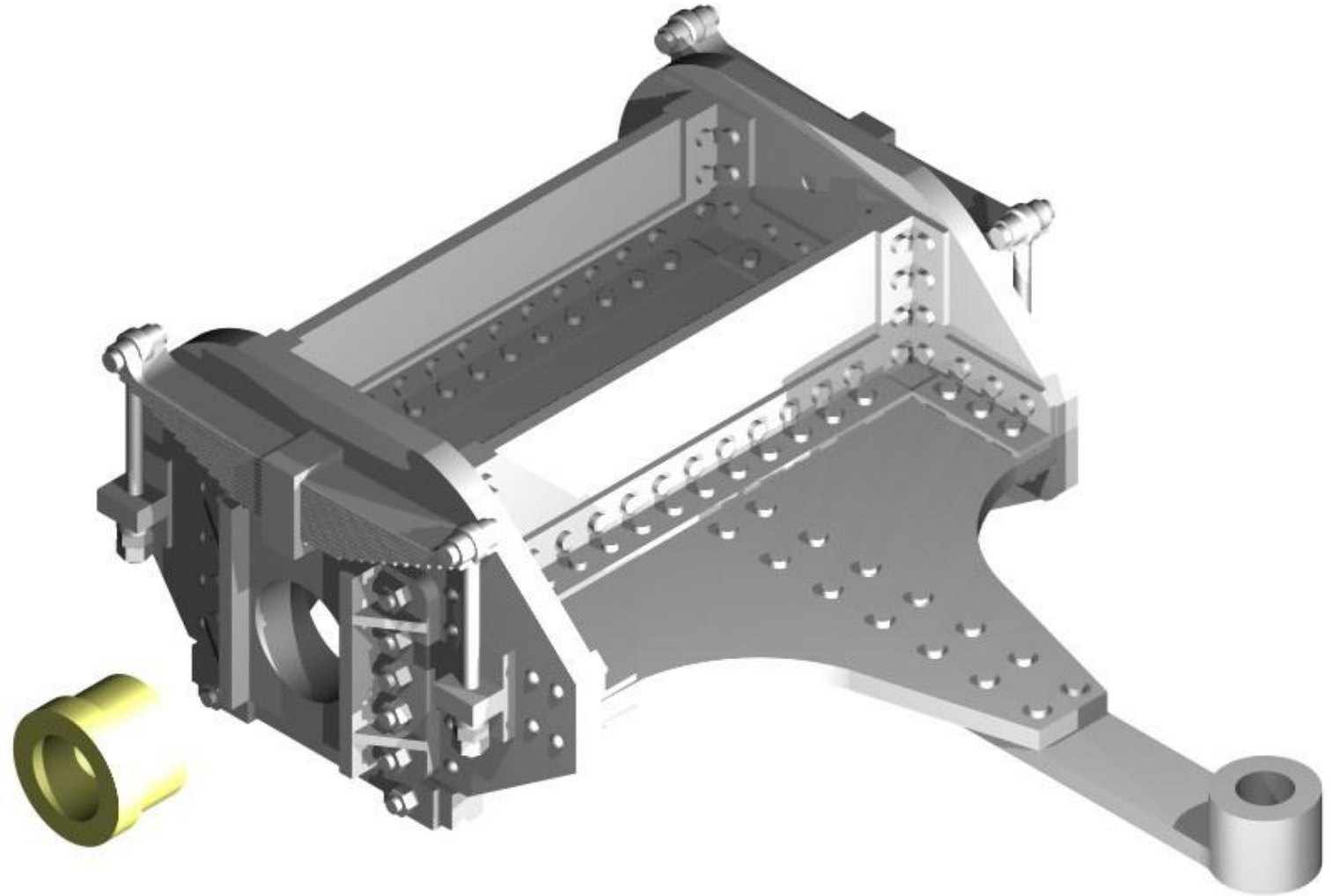


NSWGR Z20 7mm Tank Loco Kit

Single Axle Pony Truck Step _34

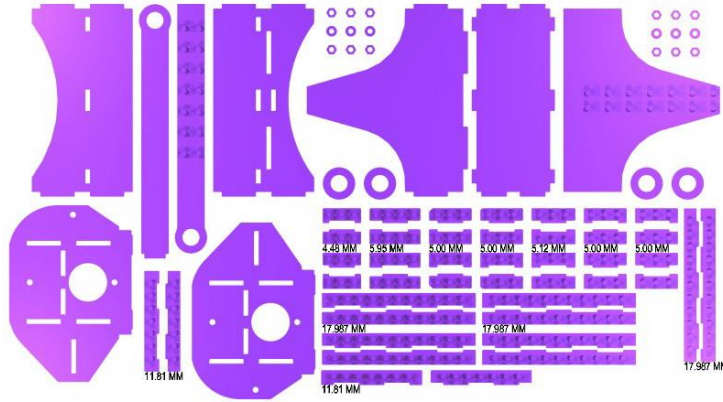


The bearings are the same for both pony trucks, as the parts have been designed to suit the same brass bearing.



NSWGR Z20 7mm Tank Loco Kit

Single Axle Pony Truck Step _35



The finished Single Pony Truck. If you want more weight in the unit you can fill the top open section with small lead balls encased in Araldite. This is a method of trial and error to find the perfect weight required.

