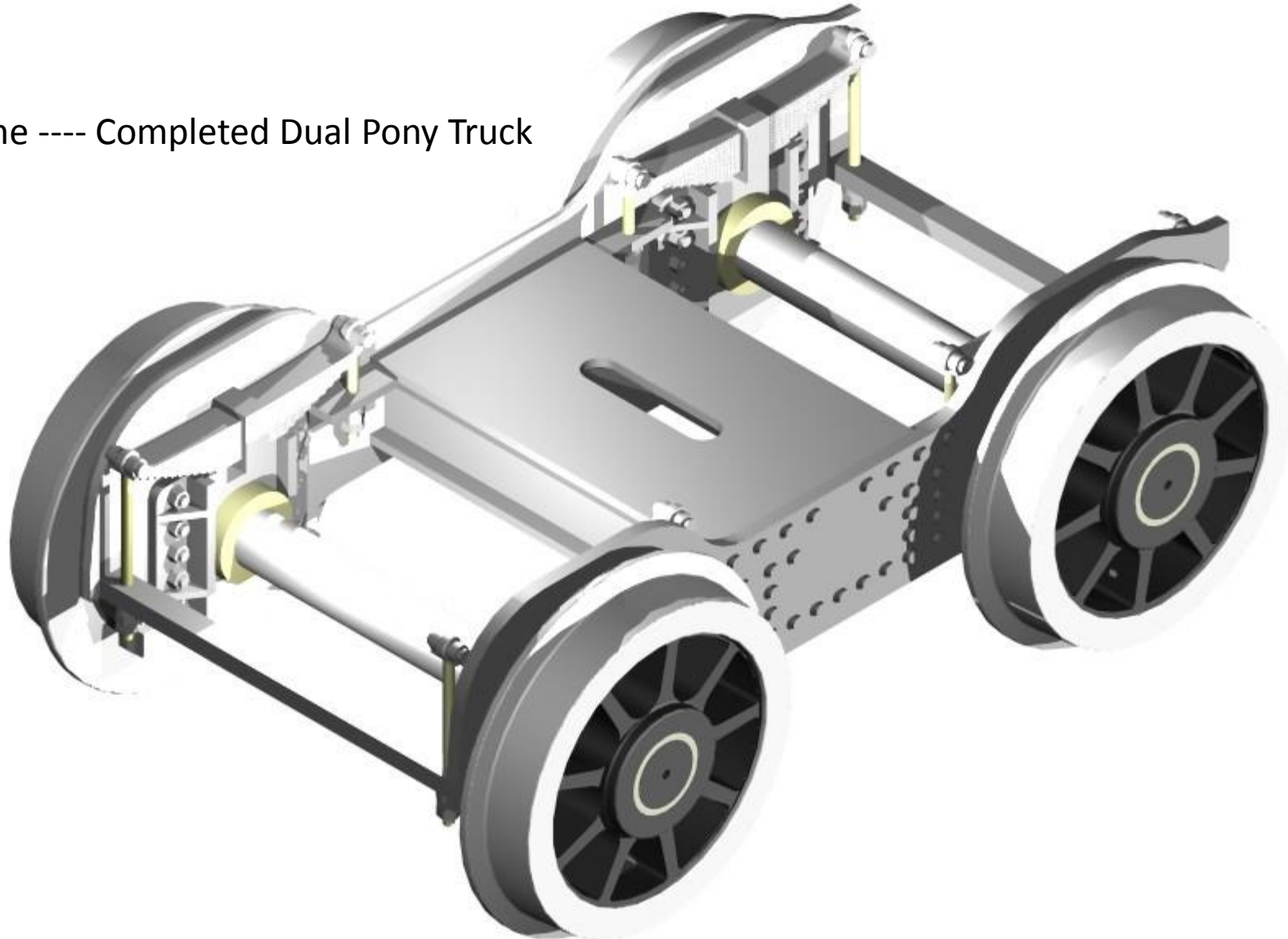


NSWGR Z20 7mm Tank Loco Kit

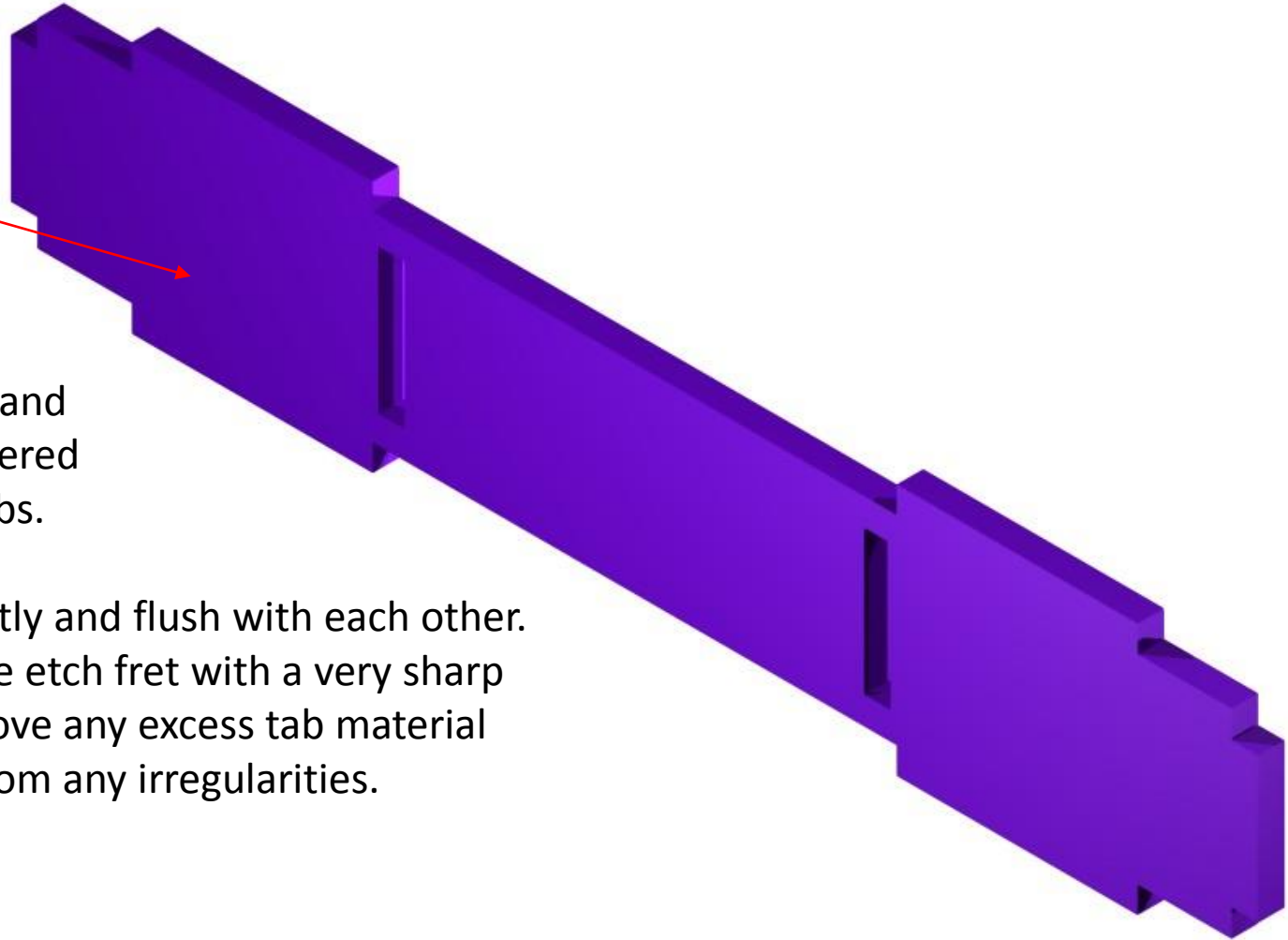
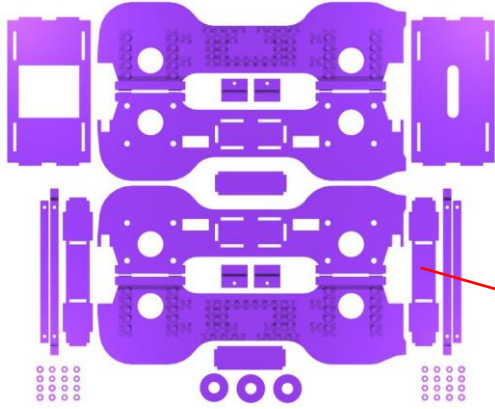
Dual Axle Pony Truck

Outcome ---- Completed Dual Pony Truck



NSWGR Z20 7mm Tank Loco Kit

Dual Axle Pony Truck Step _01

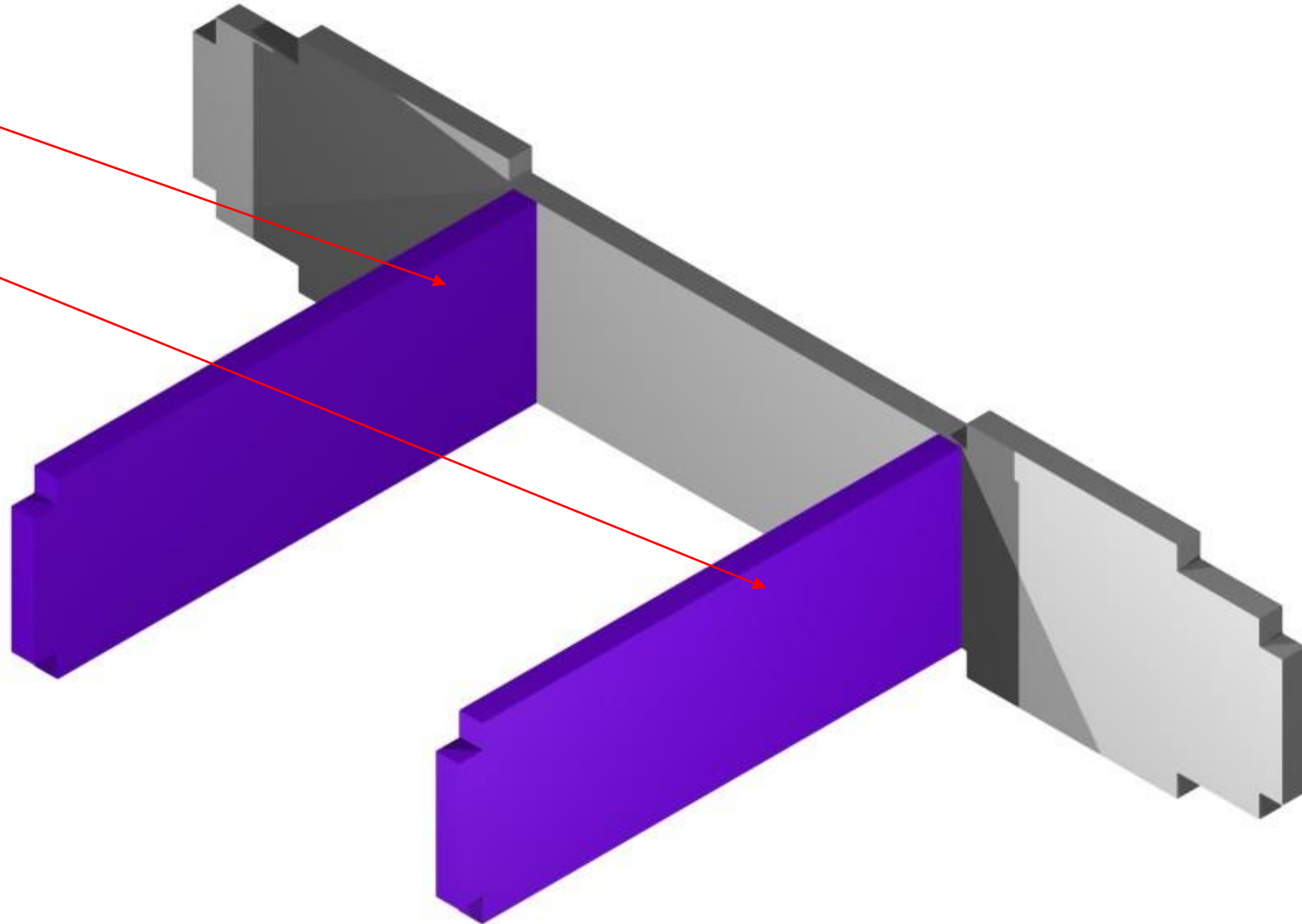
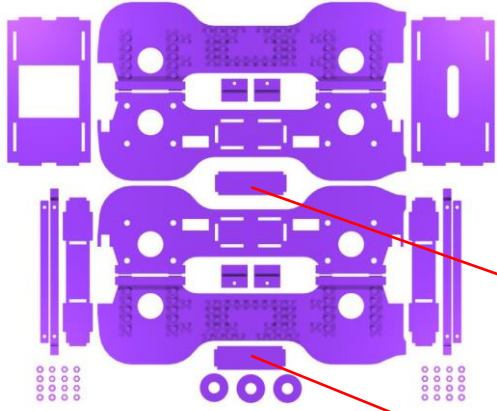


The etch is made from Nickel Silver and is 0.55 mm thick. The parts are soldered together, after locating using the tabs.

Ensure that the etched parts fit neatly and flush with each other. Carefully remove each part from the etch fret with a very sharp Stainless steel pair of scissors. Remove any excess tab material And smooth the edge of the etch from any irregularities.

NSWGR Z20 7mm Tank Loco Kit

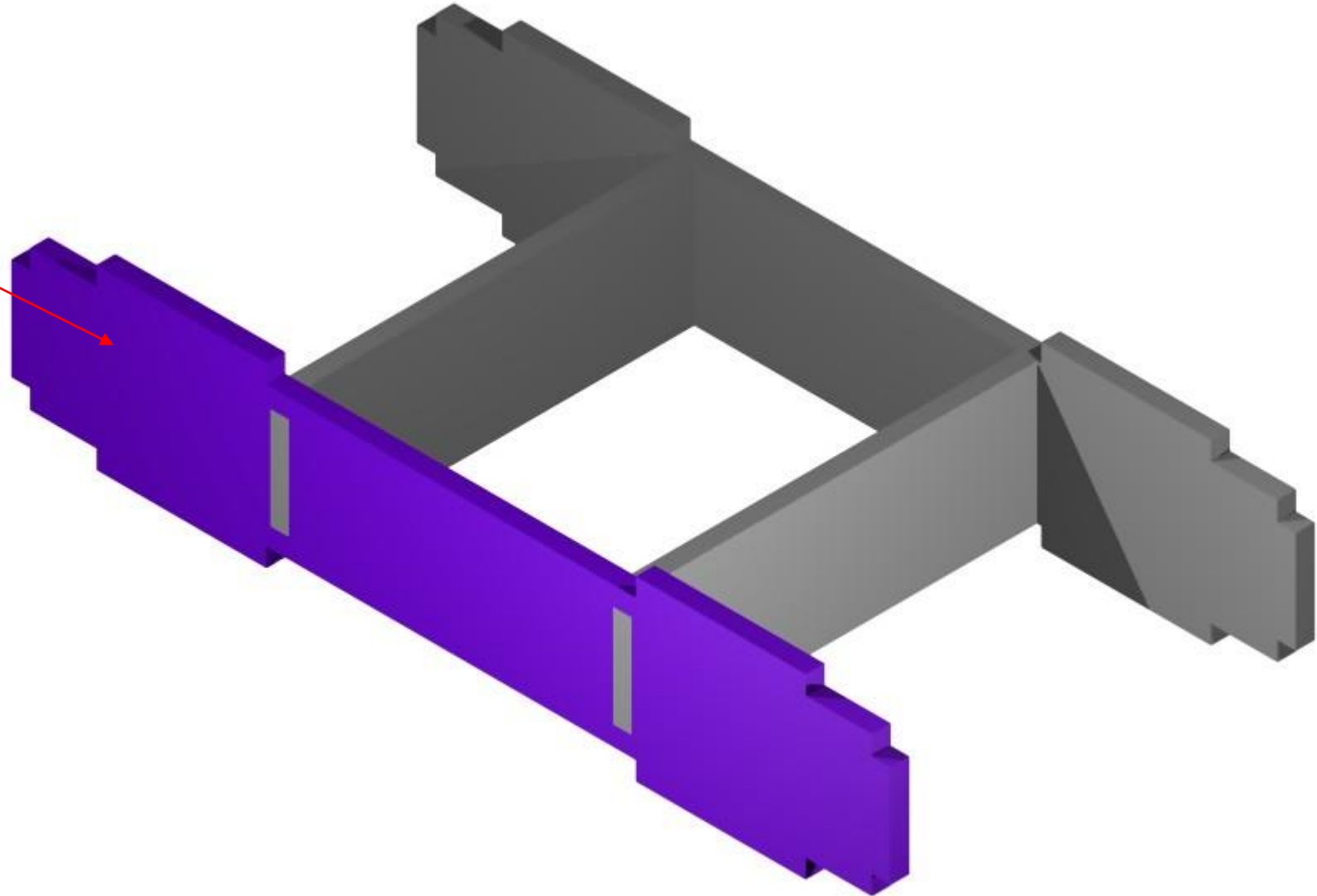
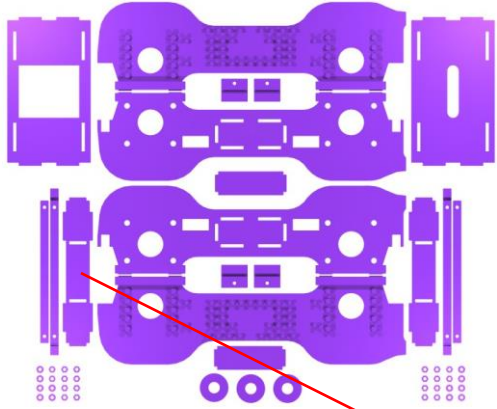
Dual Axle Pony Truck Step _02



These cross braces make up the box section of the pony truck.

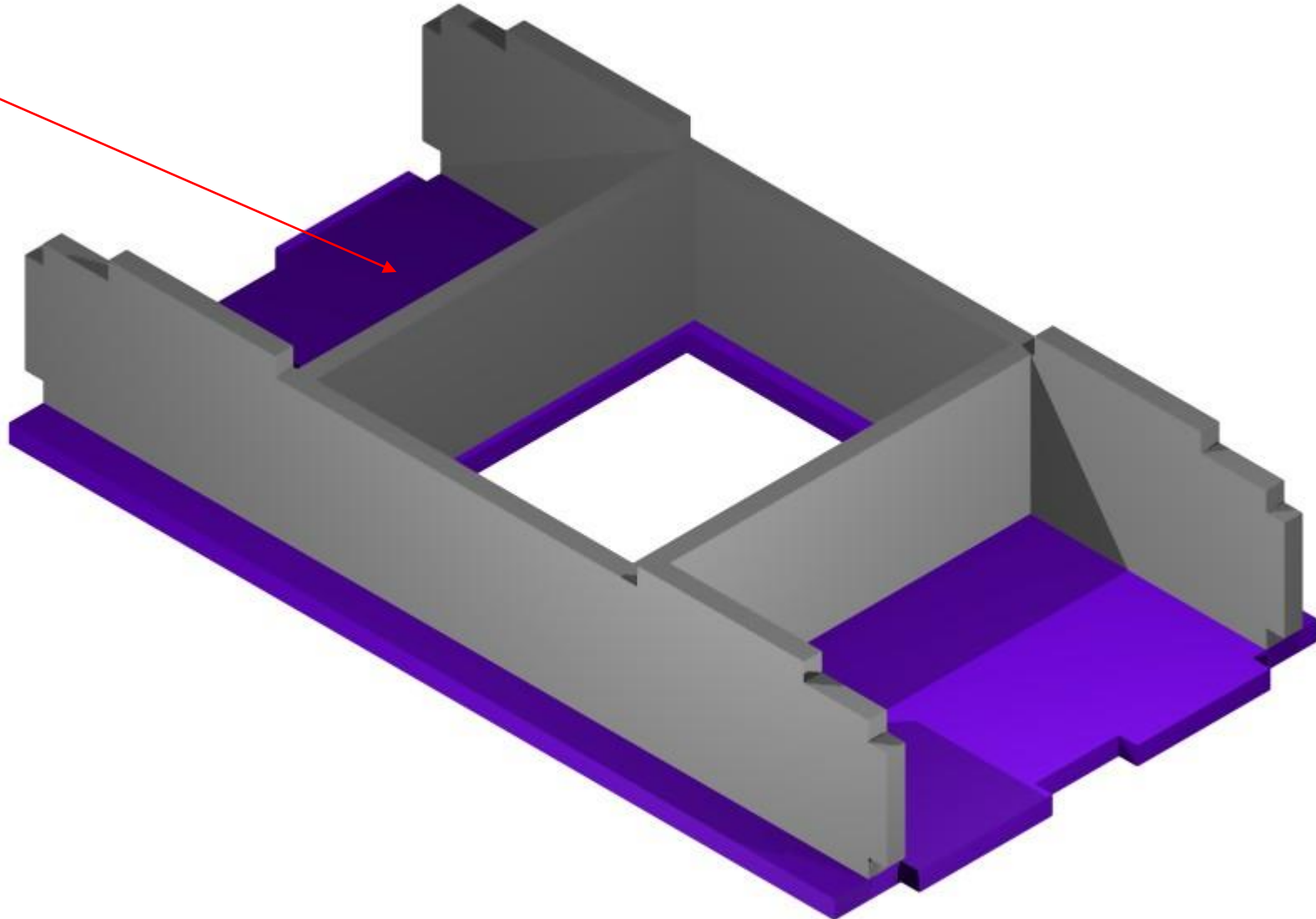
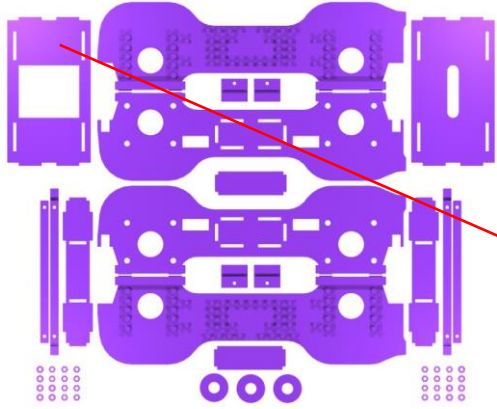
NSWGR Z20 7mm Tank Loco Kit

Dual Axle Pony Truck Step _03



NSWGR Z20 7mm Tank Loco Kit

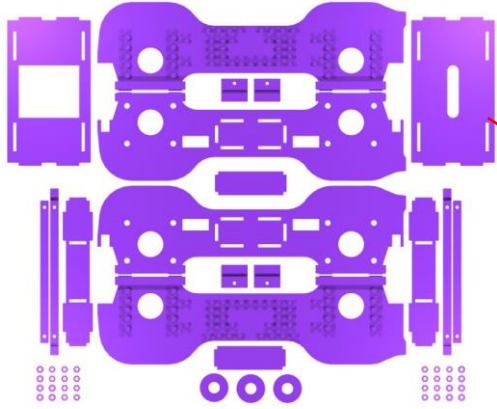
Dual Axle Pony Truck Step _04



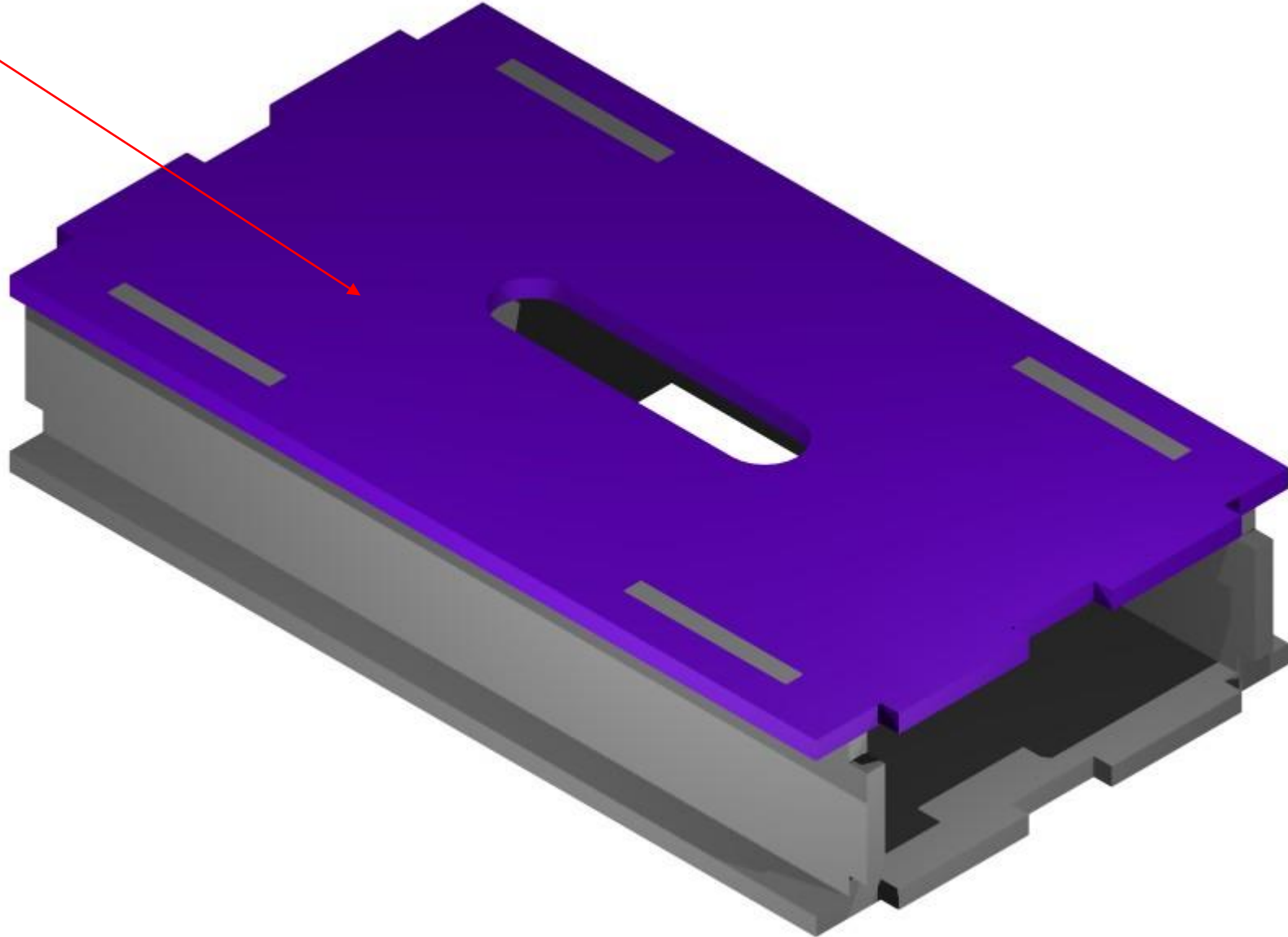
The bottom plate will ensure that the box section is square. The parts can now be completely soldered into place.

NSWGR Z20 7mm Tank Loco Kit

Dual Axle Pony Truck Step _05

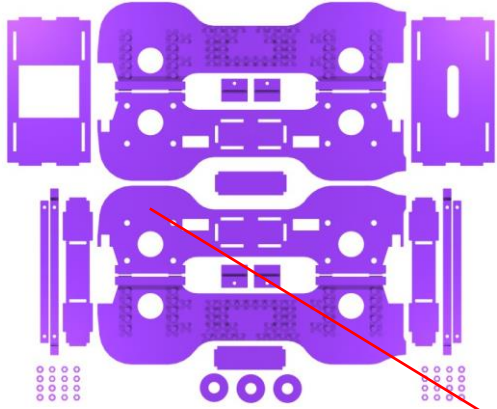


The top pieces can be soldered from the underneath, and again ensure a nice square section once completed. Wash the parts after soldering to remove any flux with warm soapy water and pat dry.

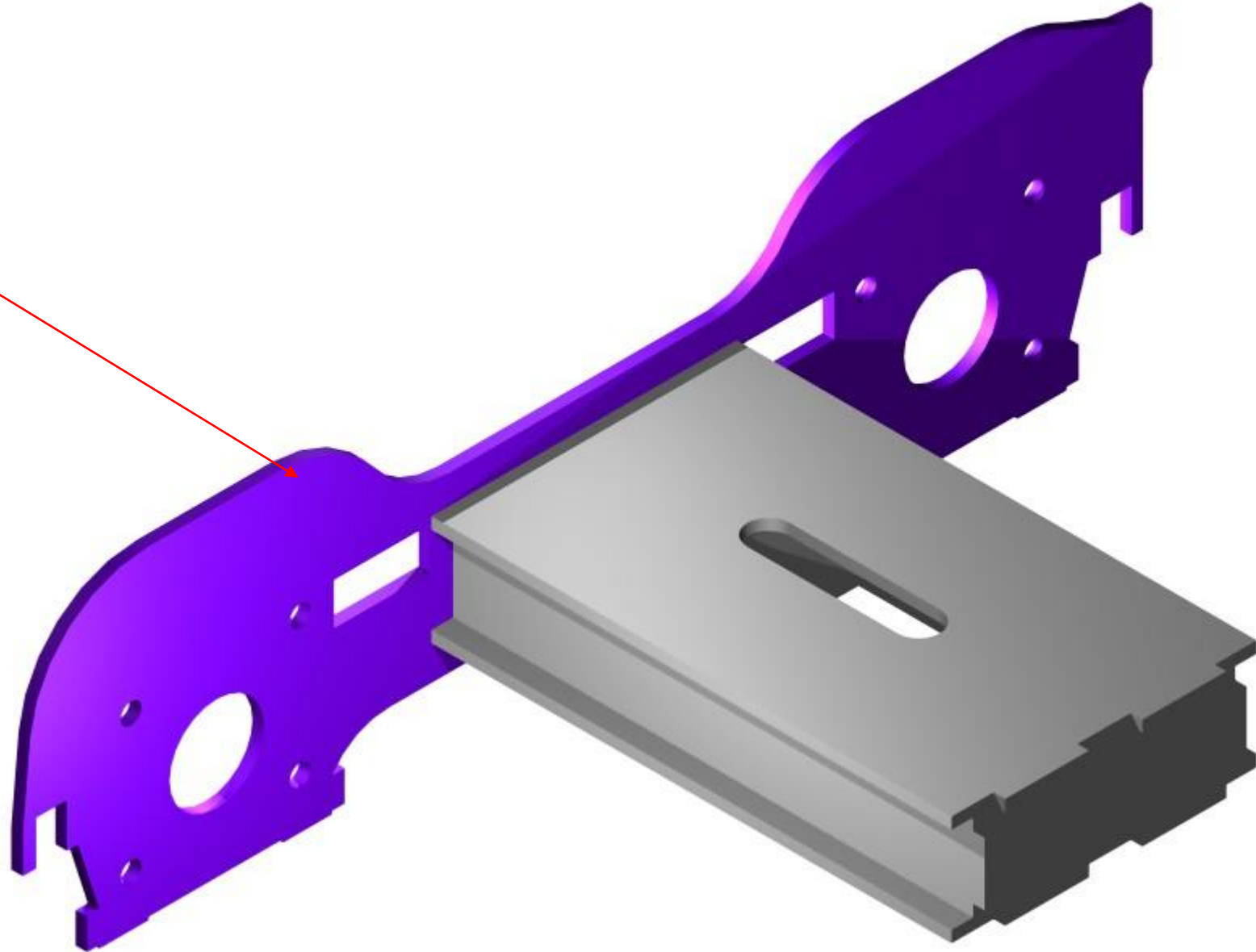


NSWGR Z20 7mm Tank Loco Kit

Dual Axle Pony Truck Step _06

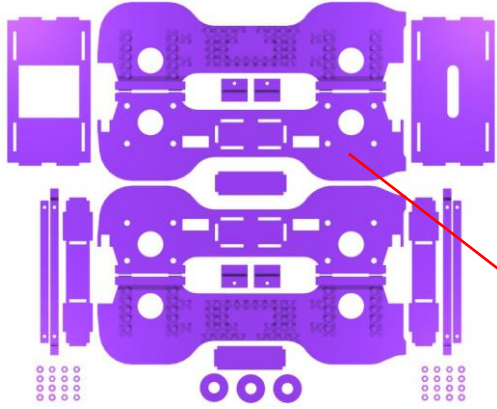


The pony side frame is fitted next and soldered into place on the tabs on the side of the box section.

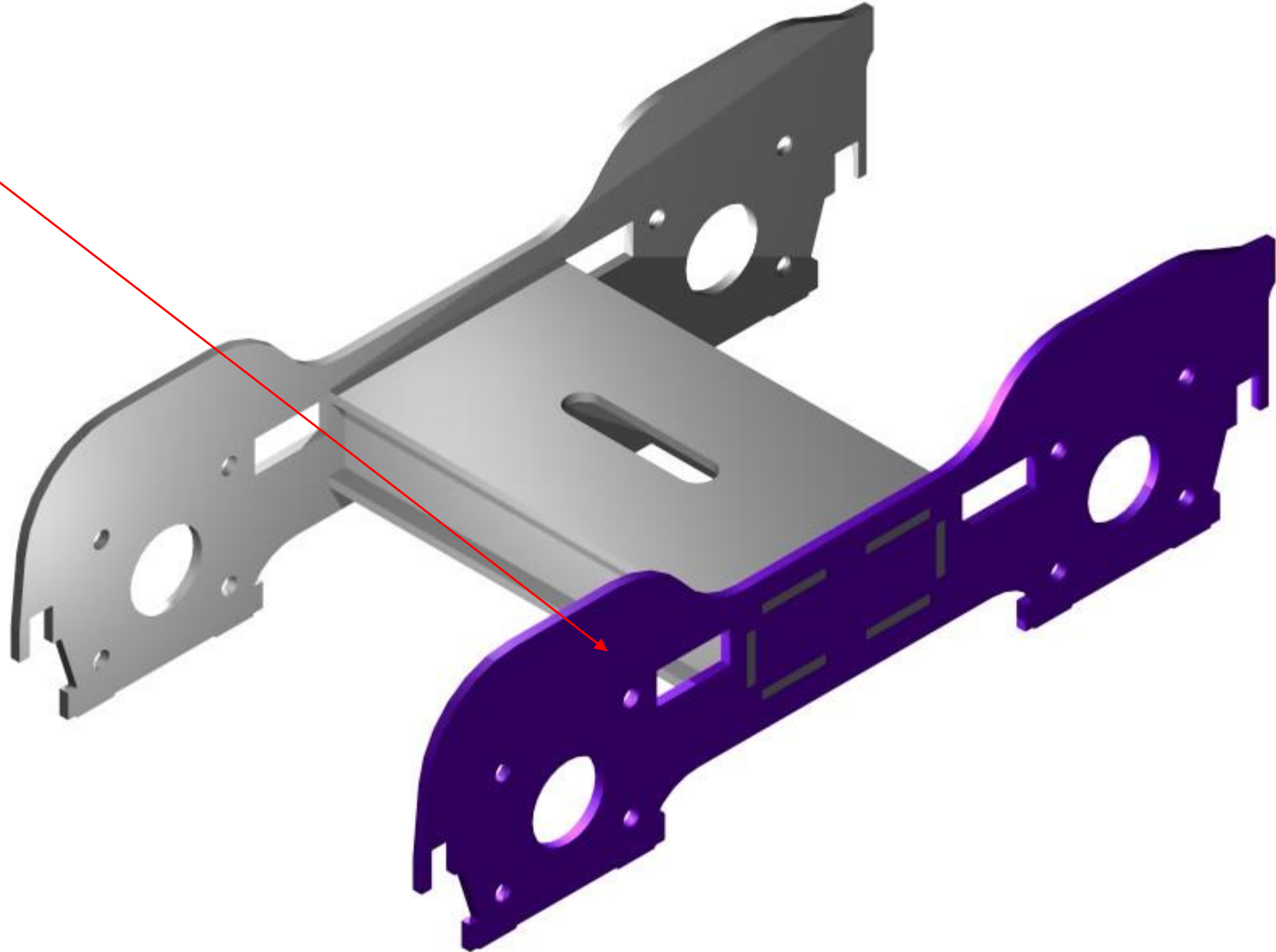


NSWGR Z20 7mm Tank Loco Kit

Dual Axle Pony Truck Step _07

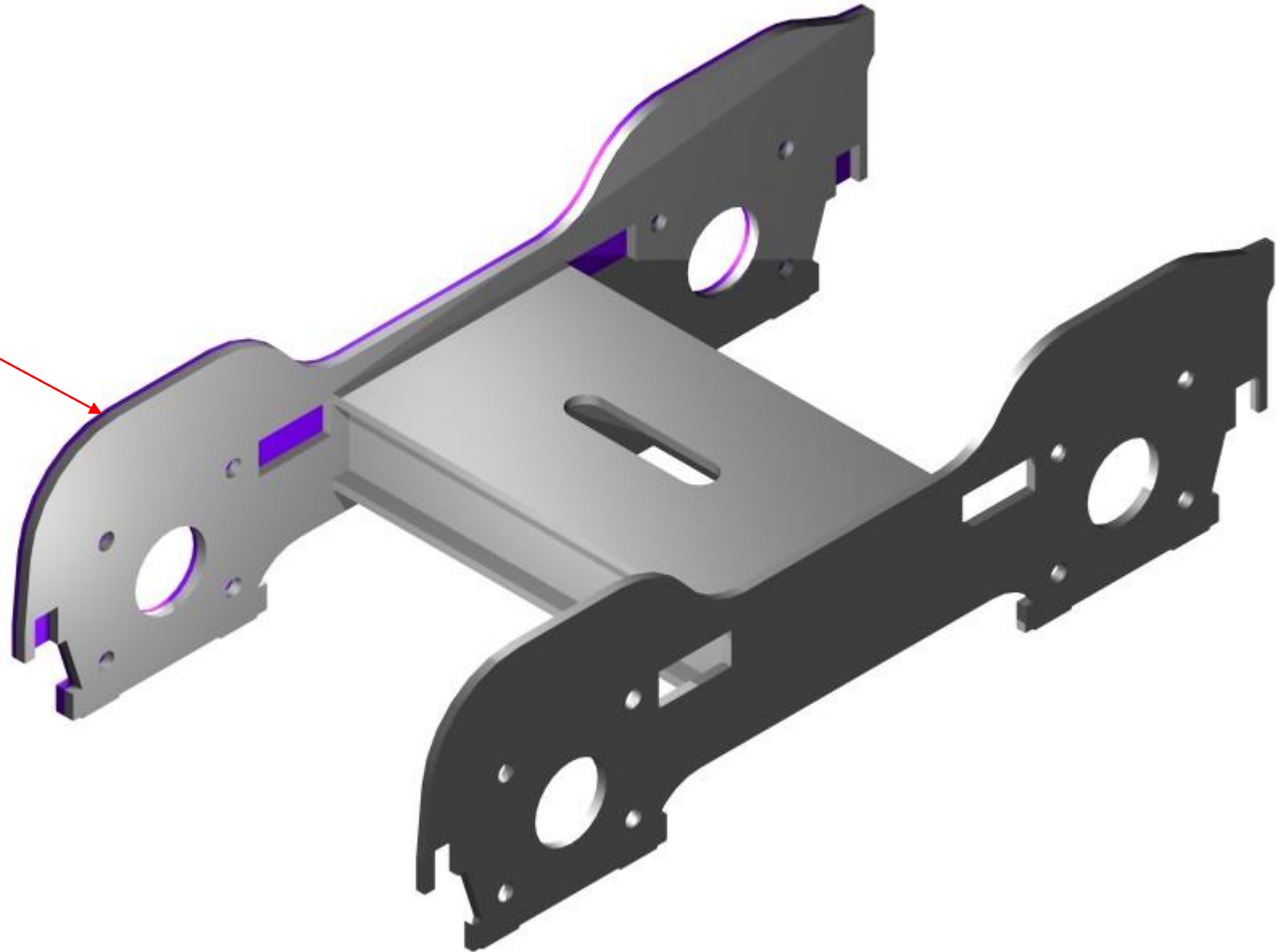
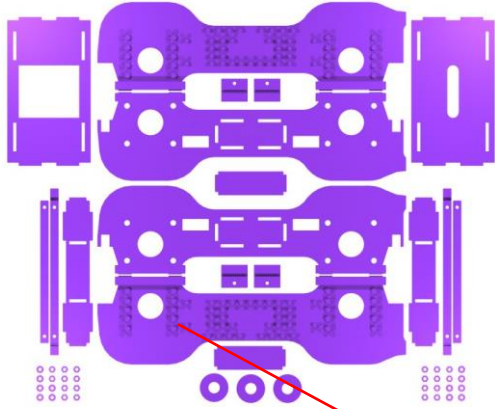


Once both sides are done, the outer detail sides can be laminated onto the existing sides.



NSWGR Z20 7mm Tank Loco Kit

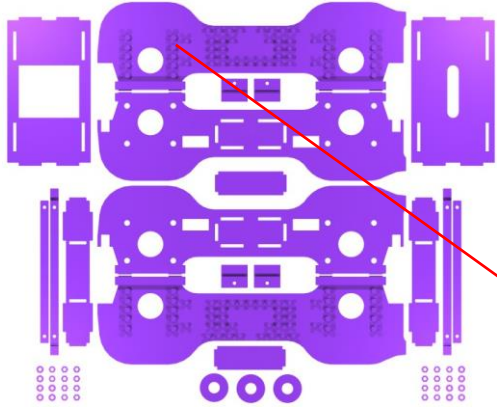
Dual Axle Pony Truck Step _08



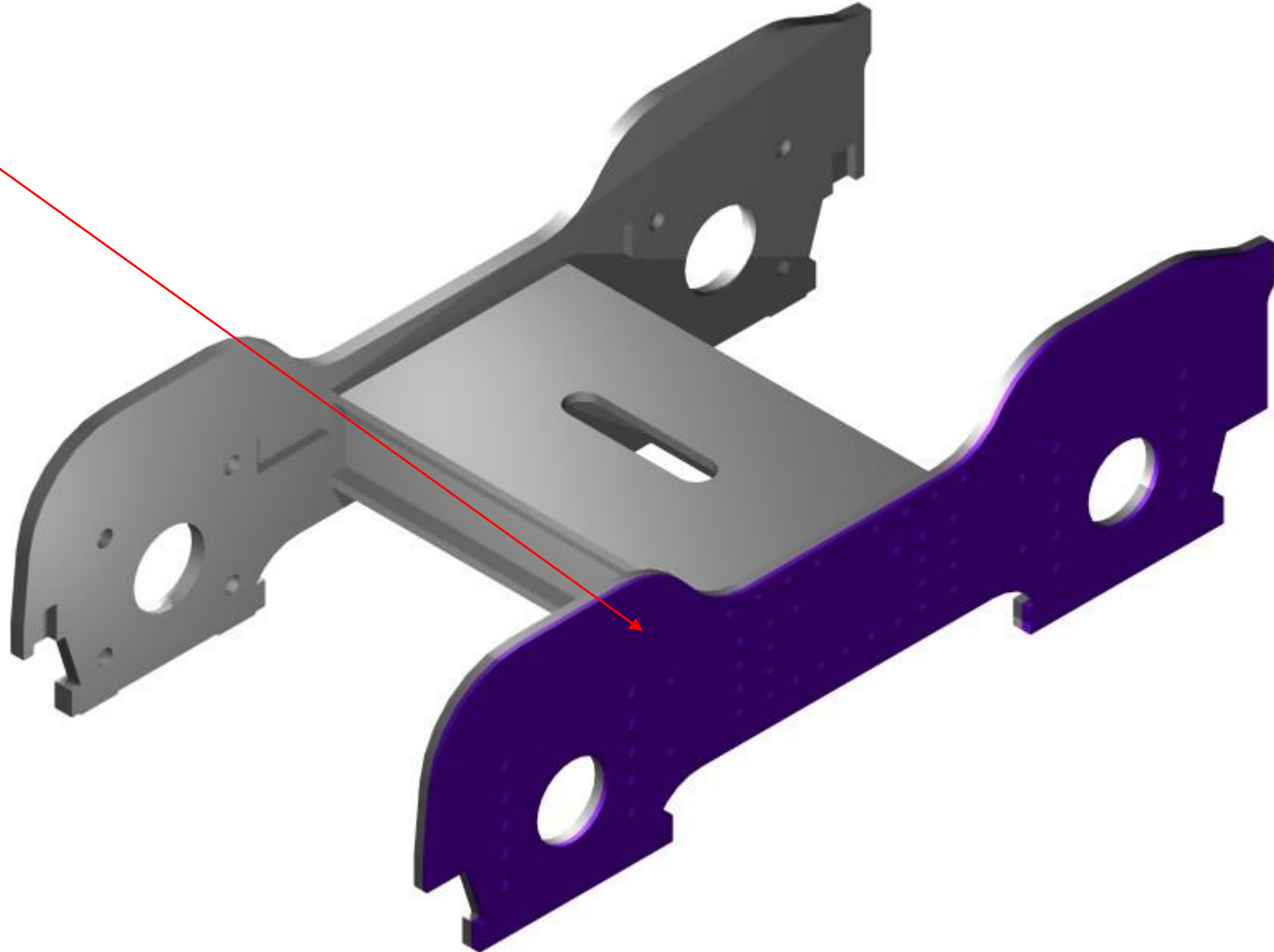
The ensure a good fit, locate the outer side frame using a bearing or a drill to centre the frames together. Hold the parts together while soldering with a set of 4 pegs, or a couple of bulldog clips.

NSWGR Z20 7mm Tank Loco Kit

Dual Axle Pony Truck Step _09

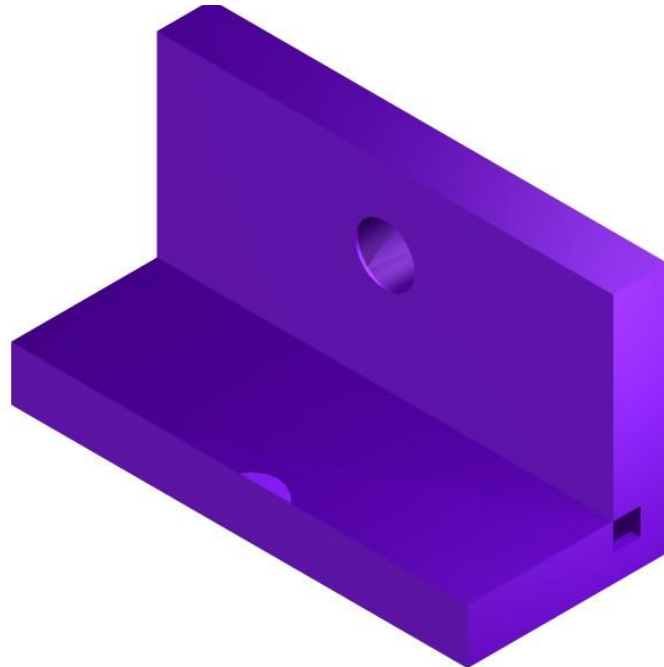
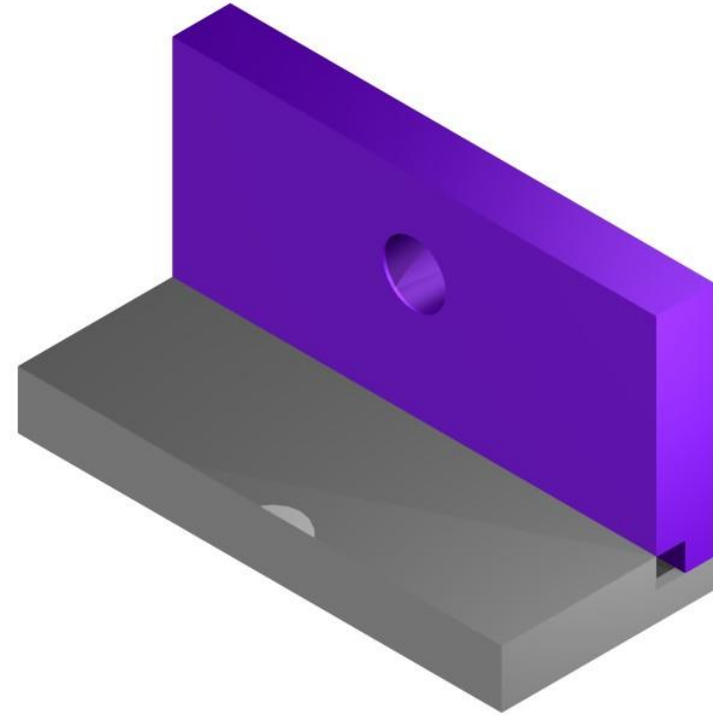
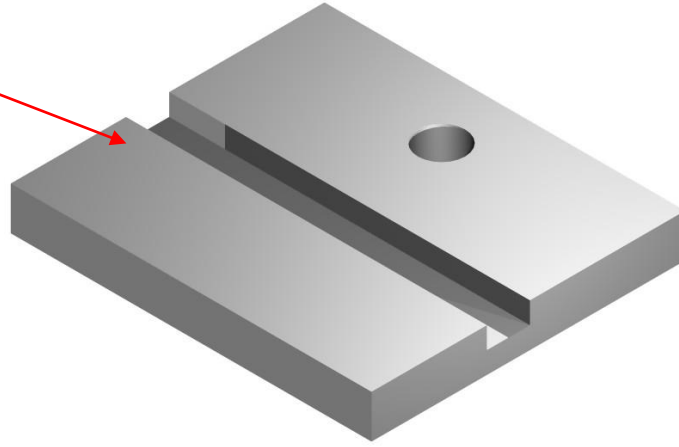
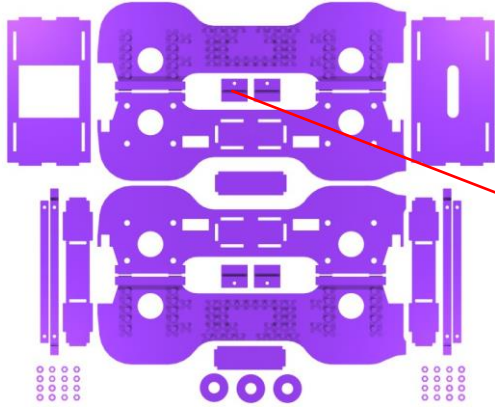


The bearing holes need to accurately aligned so that the bearings will fit later on in the build.



NSWGR Z20 7mm Tank Loco Kit

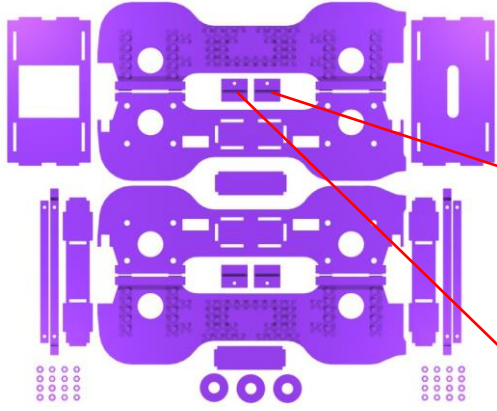
Dual Axle Pony Truck Step _10



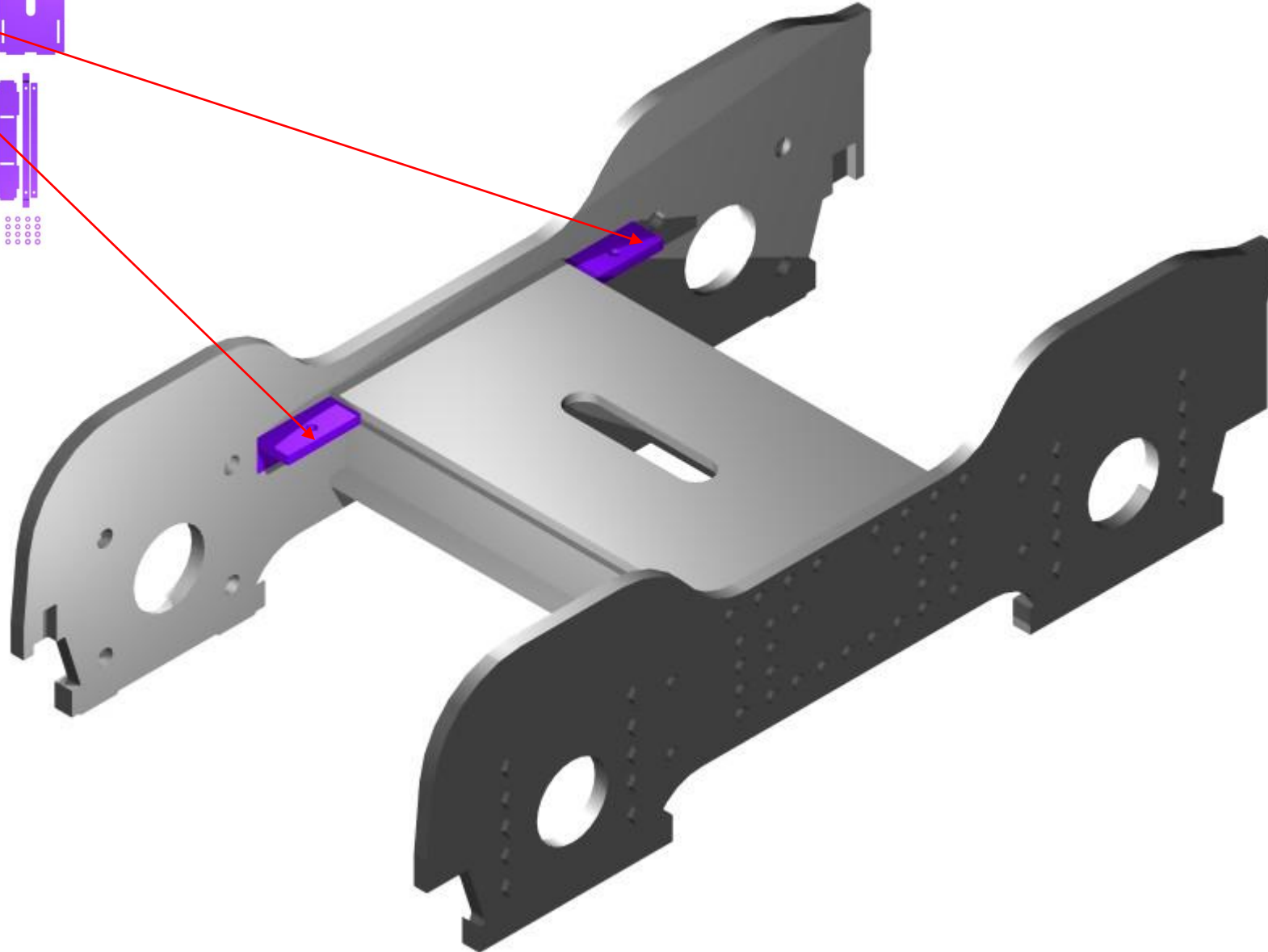
These spring inner strut supports need to be folded to 90 degrees, and the fold lines soldered to ensure that they are rigid.

NSWGR Z20 7mm Tank Loco Kit

Dual Axle Pony Truck Step _11

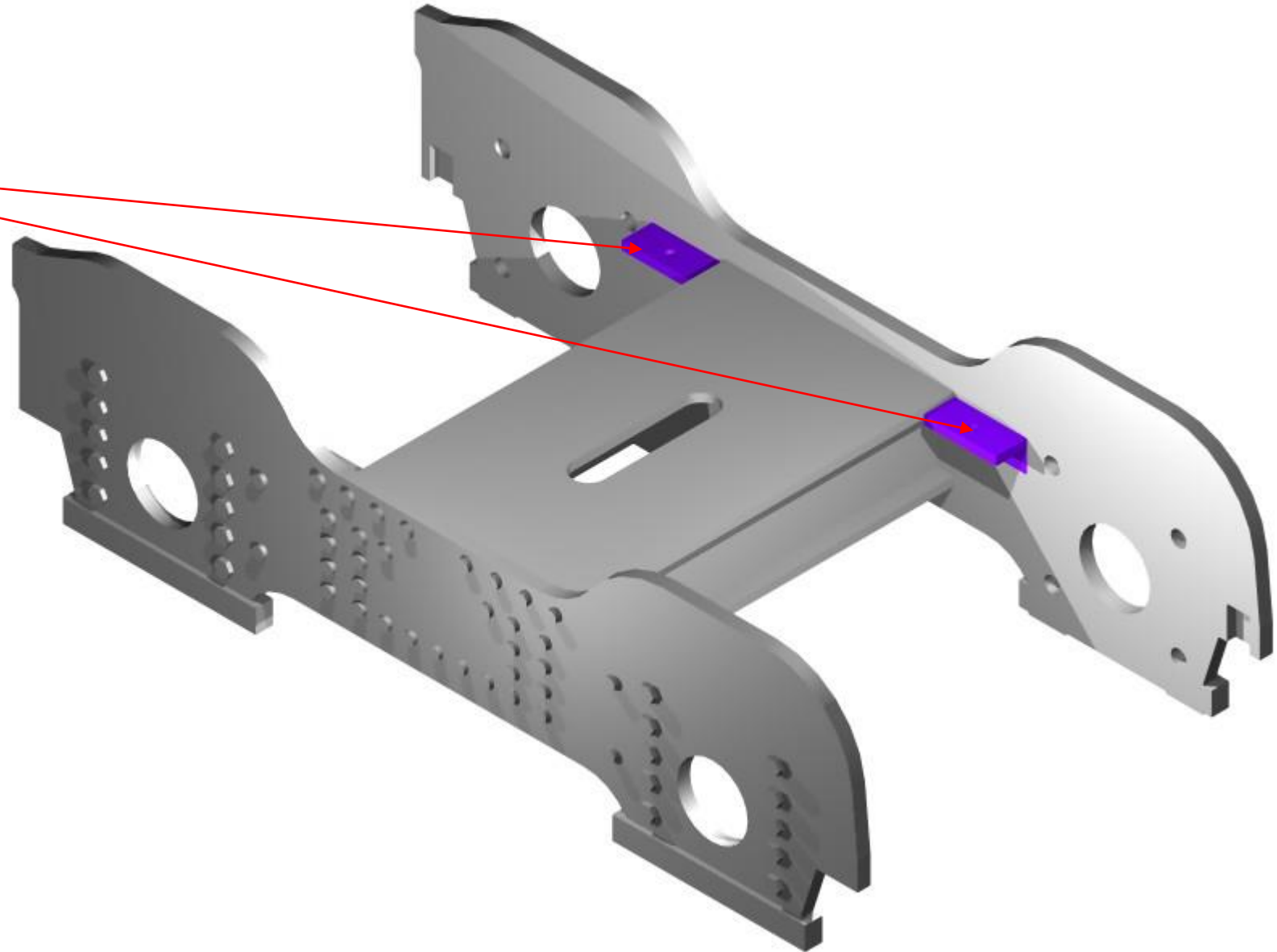
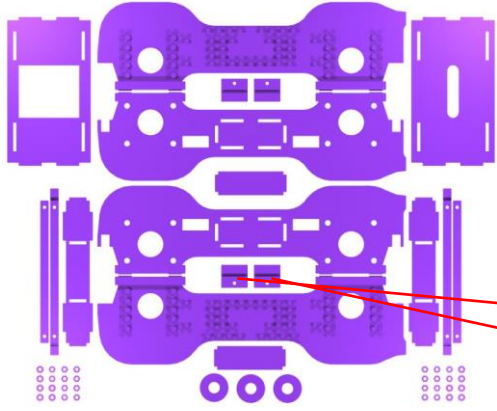


The spring inner strut supports are located into the inner part of the frame, and should be flush with the inside edge of the frame.



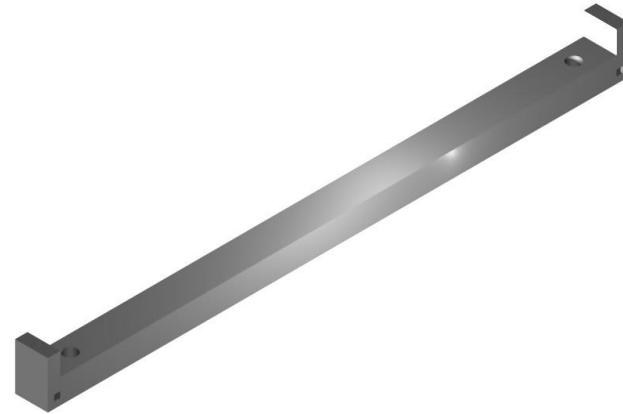
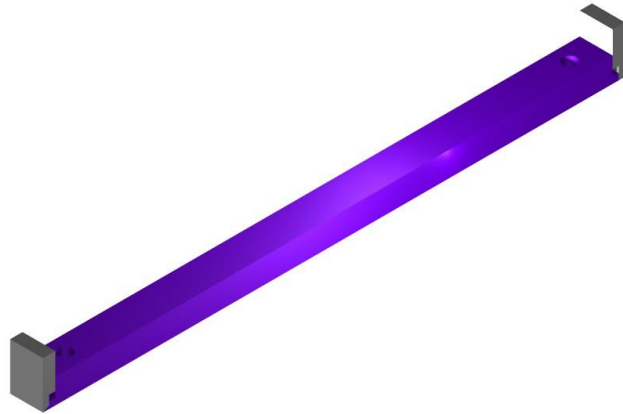
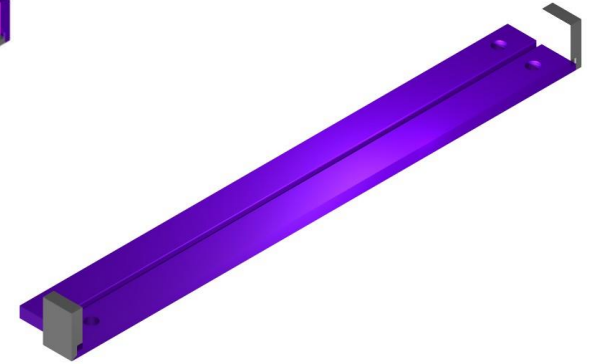
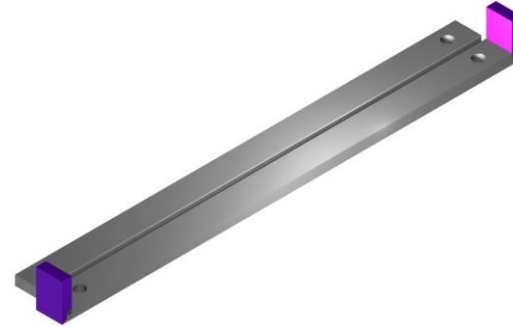
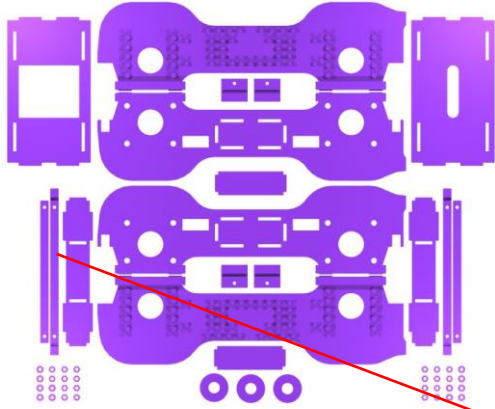
NSWGR Z20 7mm Tank Loco Kit

Dual Axle Pony Truck Step _12



NSWGR Z20 7mm Tank Loco Kit

Dual Axle Pony Truck Step _13

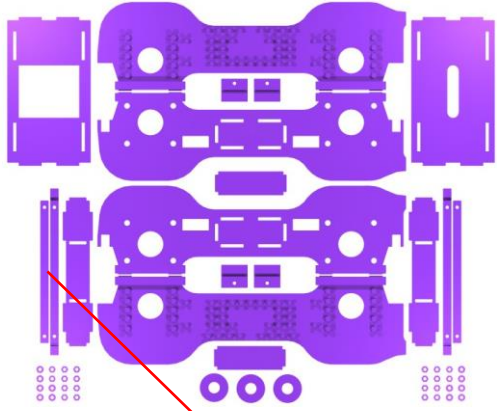


The spring outer strut support also acts as a gauge to keep the side frame at the correct measurement.

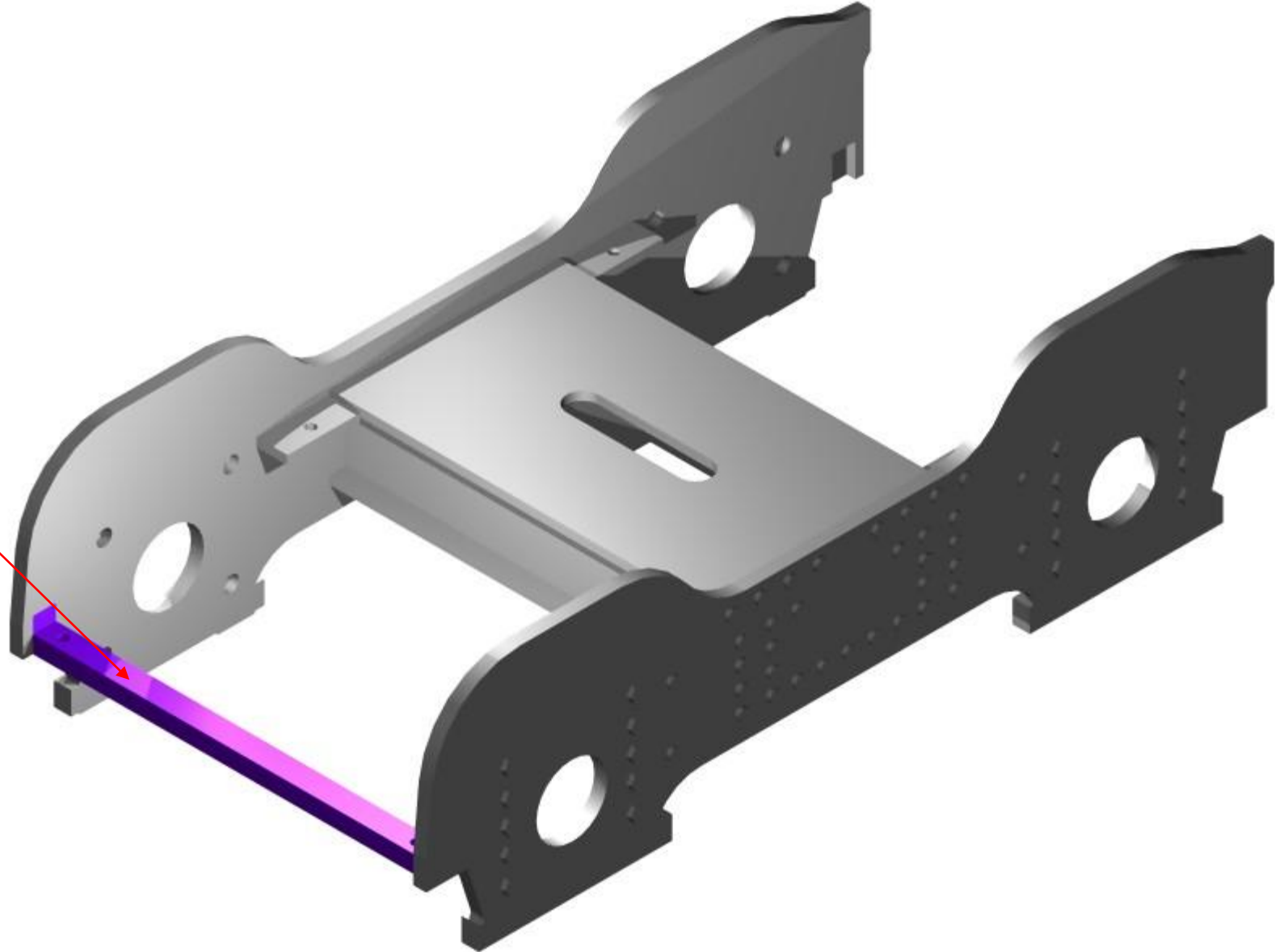
Fold the ends up and laminate the piece to the left on top to complete the parts. Both braces are the same.

NSWGR Z20 7mm Tank Loco Kit

Dual Axle Pony Truck Step _14

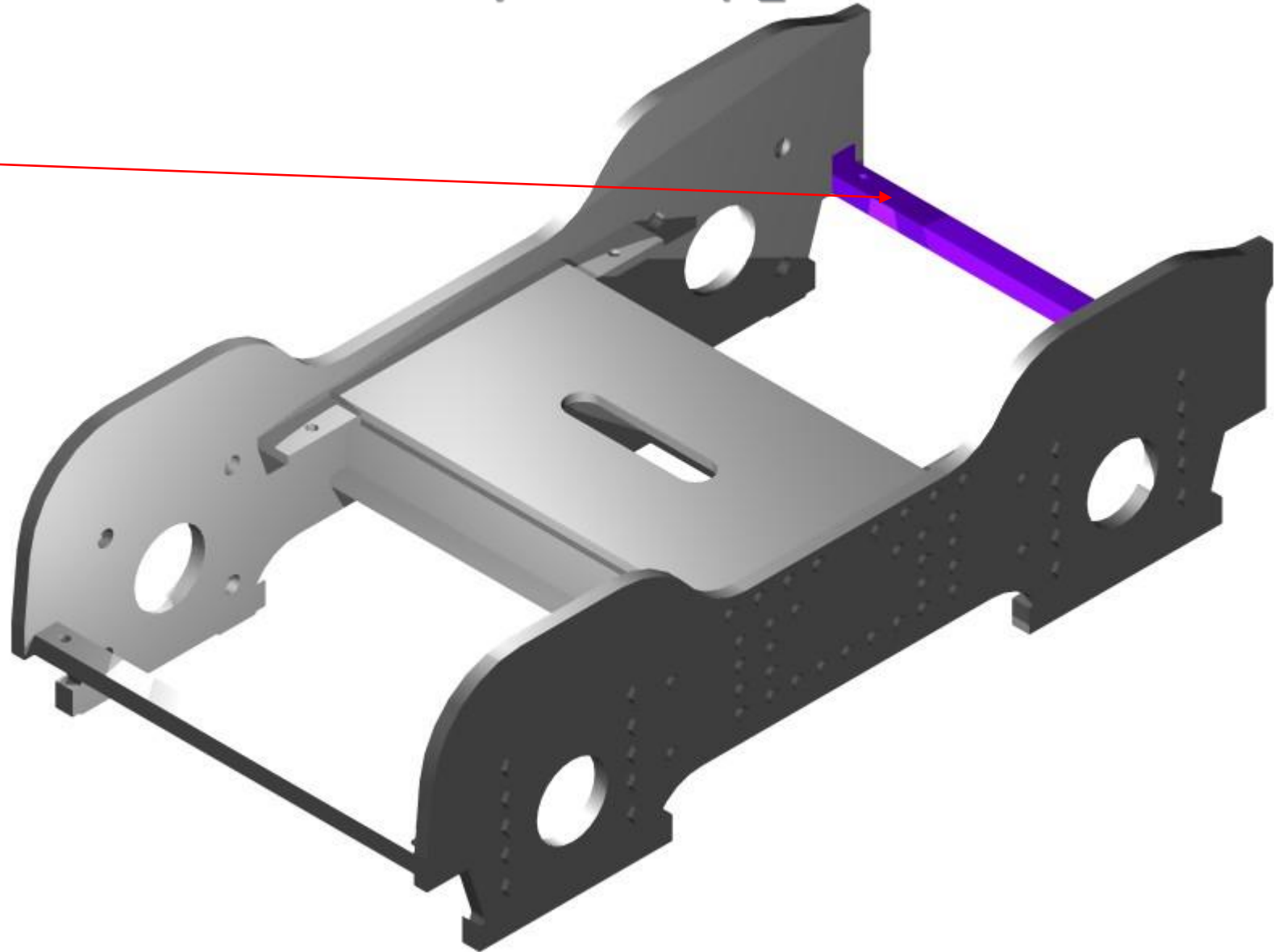
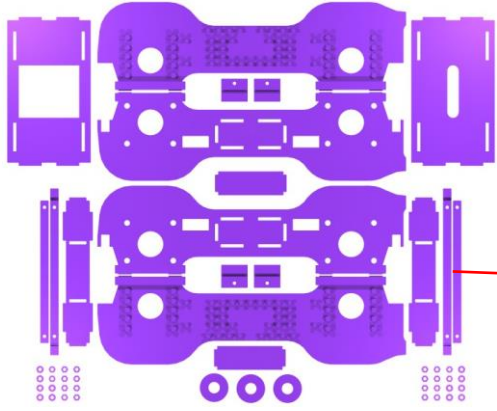


The fitting of spring
outer strut support
and brace.



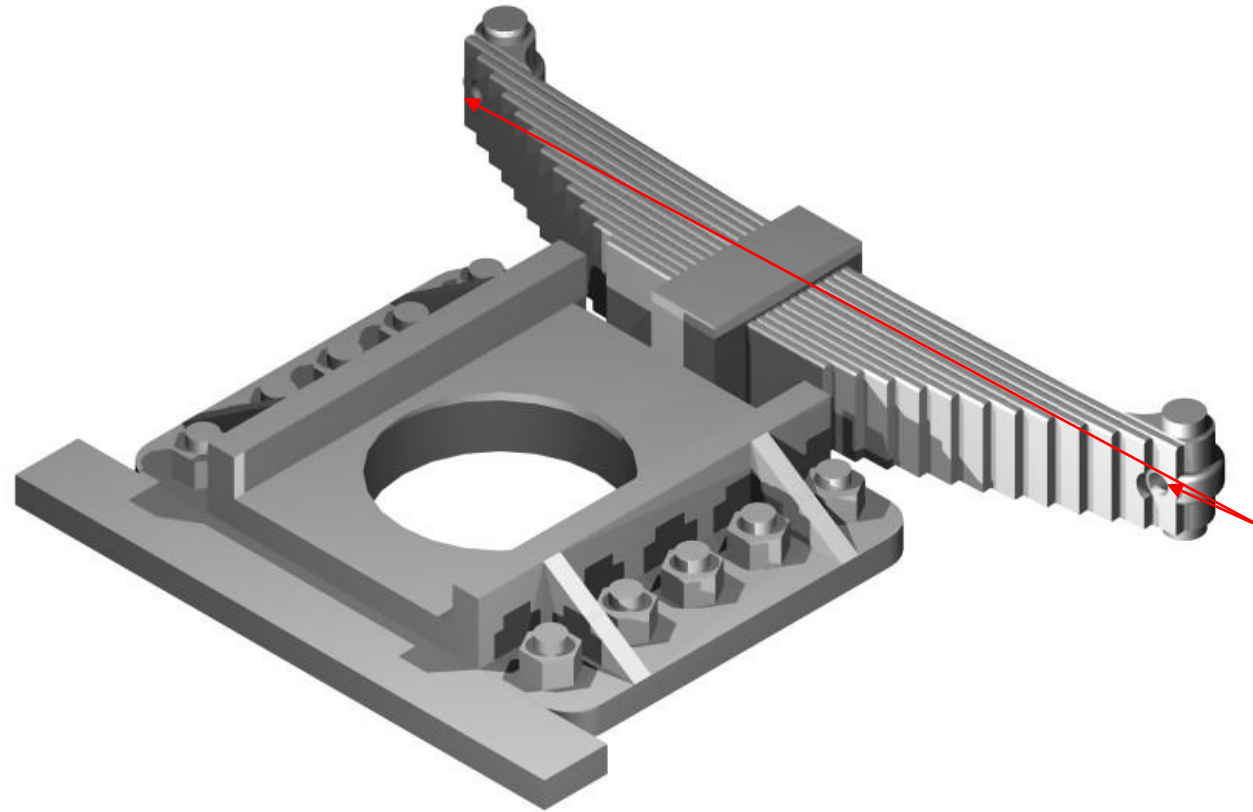
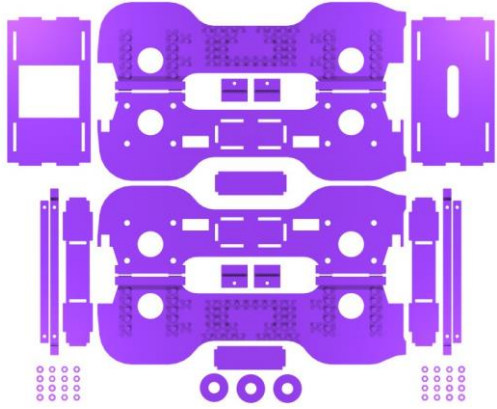
NSWGR Z20 7mm Tank Loco Kit

Dual Axle Pony Truck Step _15



NSWGR Z20 7mm Tank Loco Kit

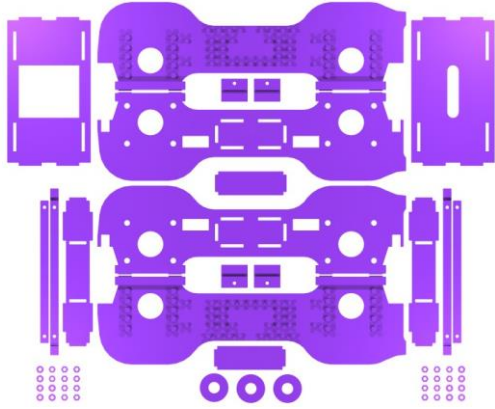
Dual Axle Pony Truck Step _16



There are 4 pewter pony spring, and bolt detail castings. They also have 4 x 1 mm pins located on the back of the part for locating onto the etched frame. There are 2 conical holes under each spring pivot. These holes need to be drilled very carefully to allow a 0.6 mm brass wire to fit in place about half way though the pin.

NSWGR Z20 7mm Tank Loco Kit

Dual Axle Pony Truck Step _17

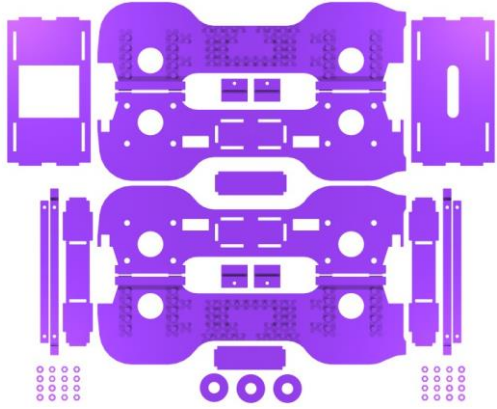


The 1 mm pins on the rear of the casting fit into the holes in the rear of the frames. The castings can be soldered or glued into place. Soldering is the preferred option.

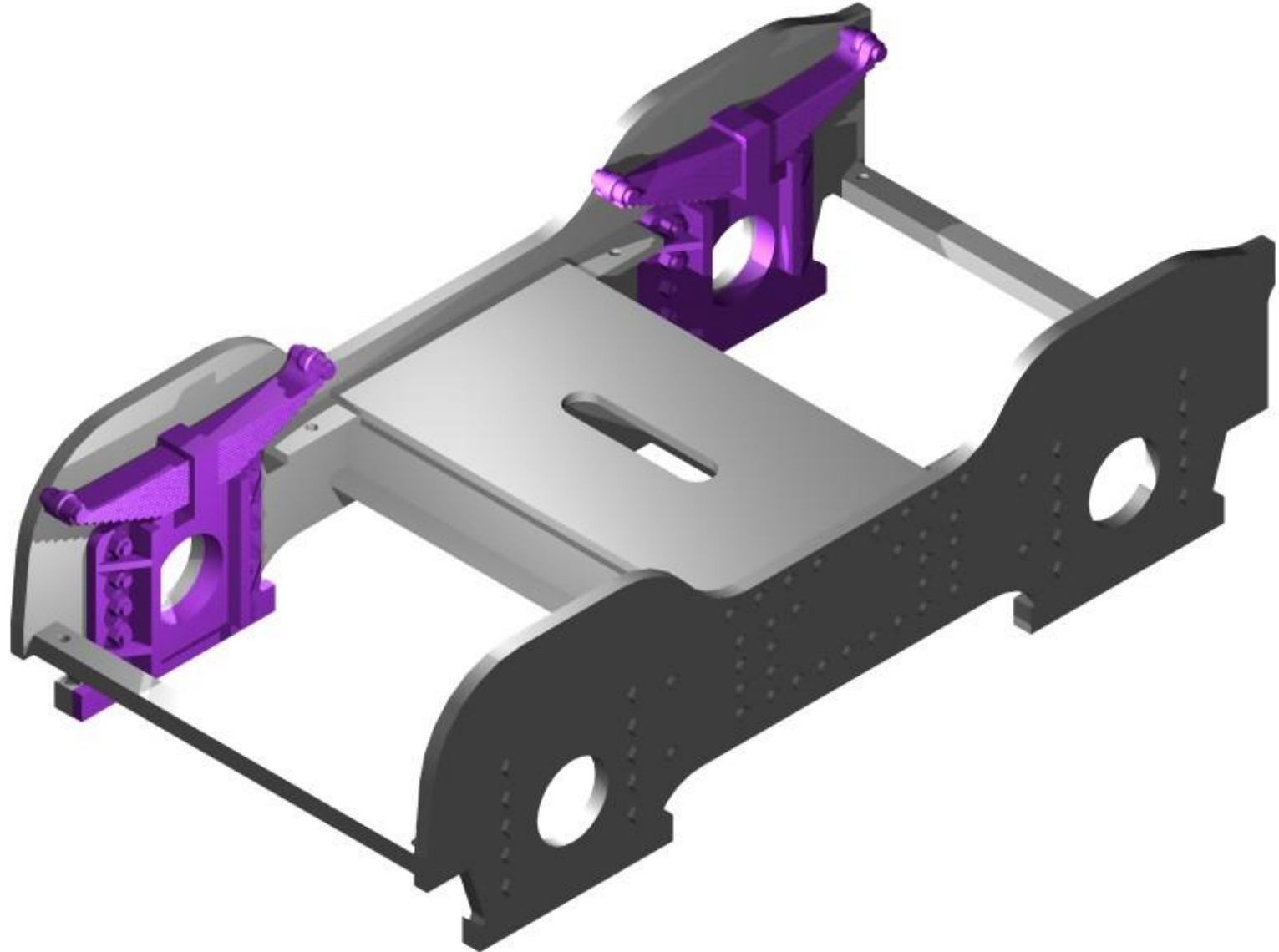


NSWGR Z20 7mm Tank Loco Kit

Dual Axle Pony Truck Step _18

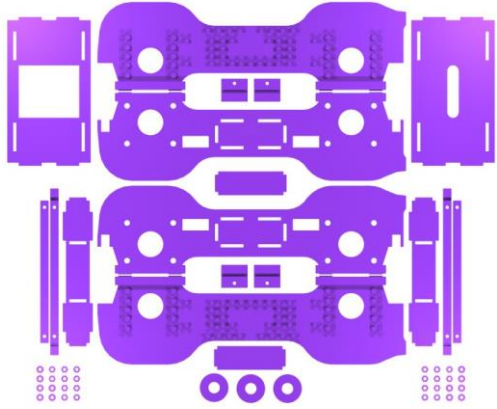


The hole for the bearing should also be aligned when the castings are fitted.

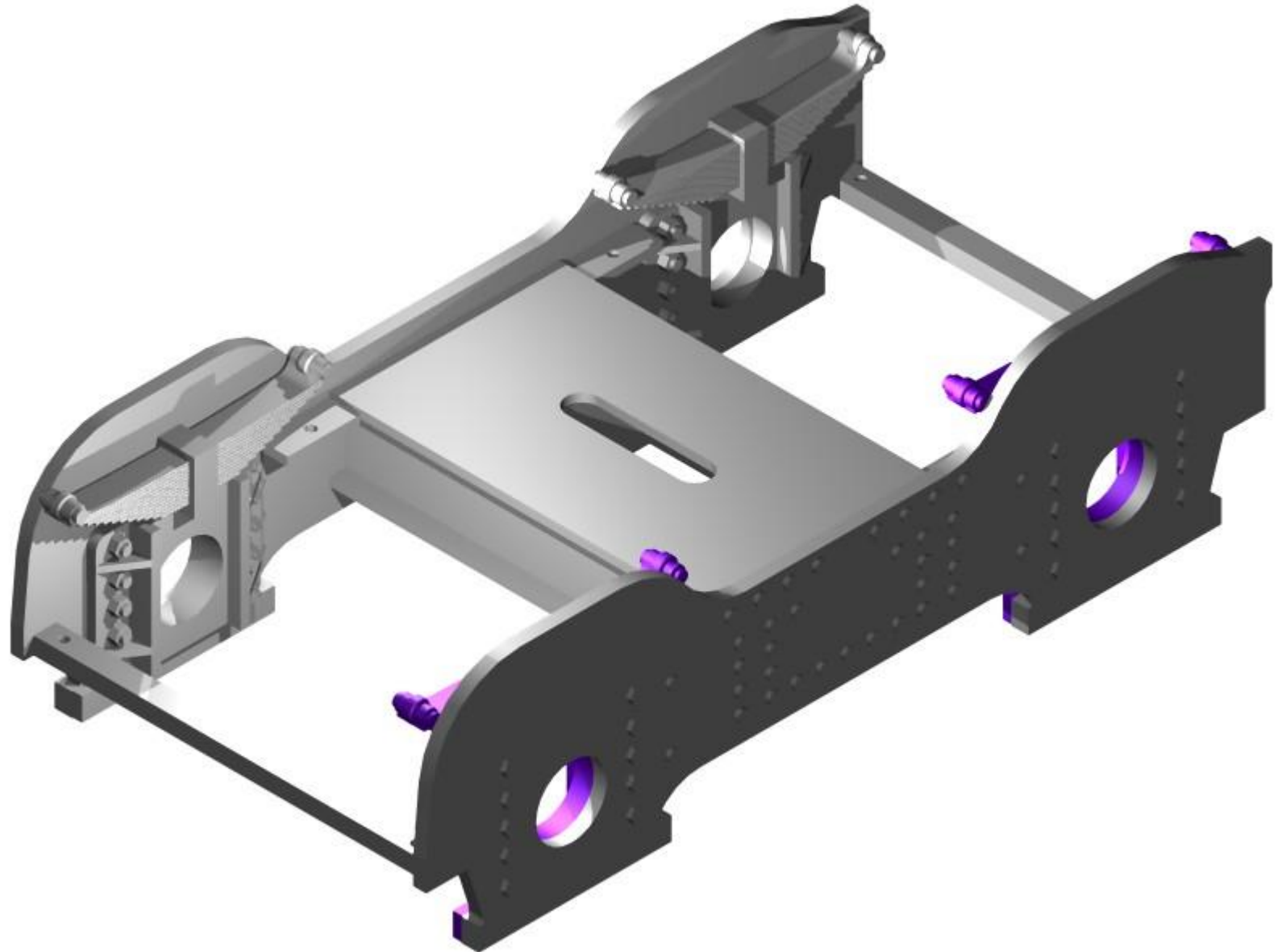


NSWGR Z20 7mm Tank Loco Kit

Dual Axle Pony Truck Step _19

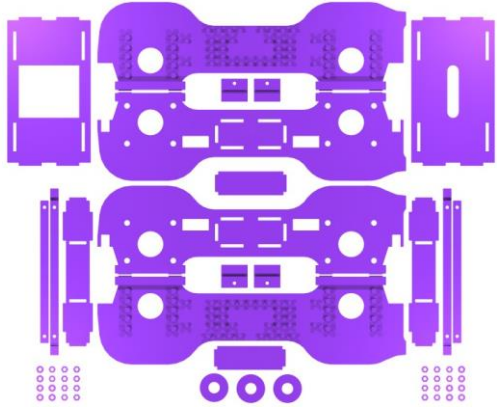


The hole for the bearing should also be aligned when the castings are fitted.

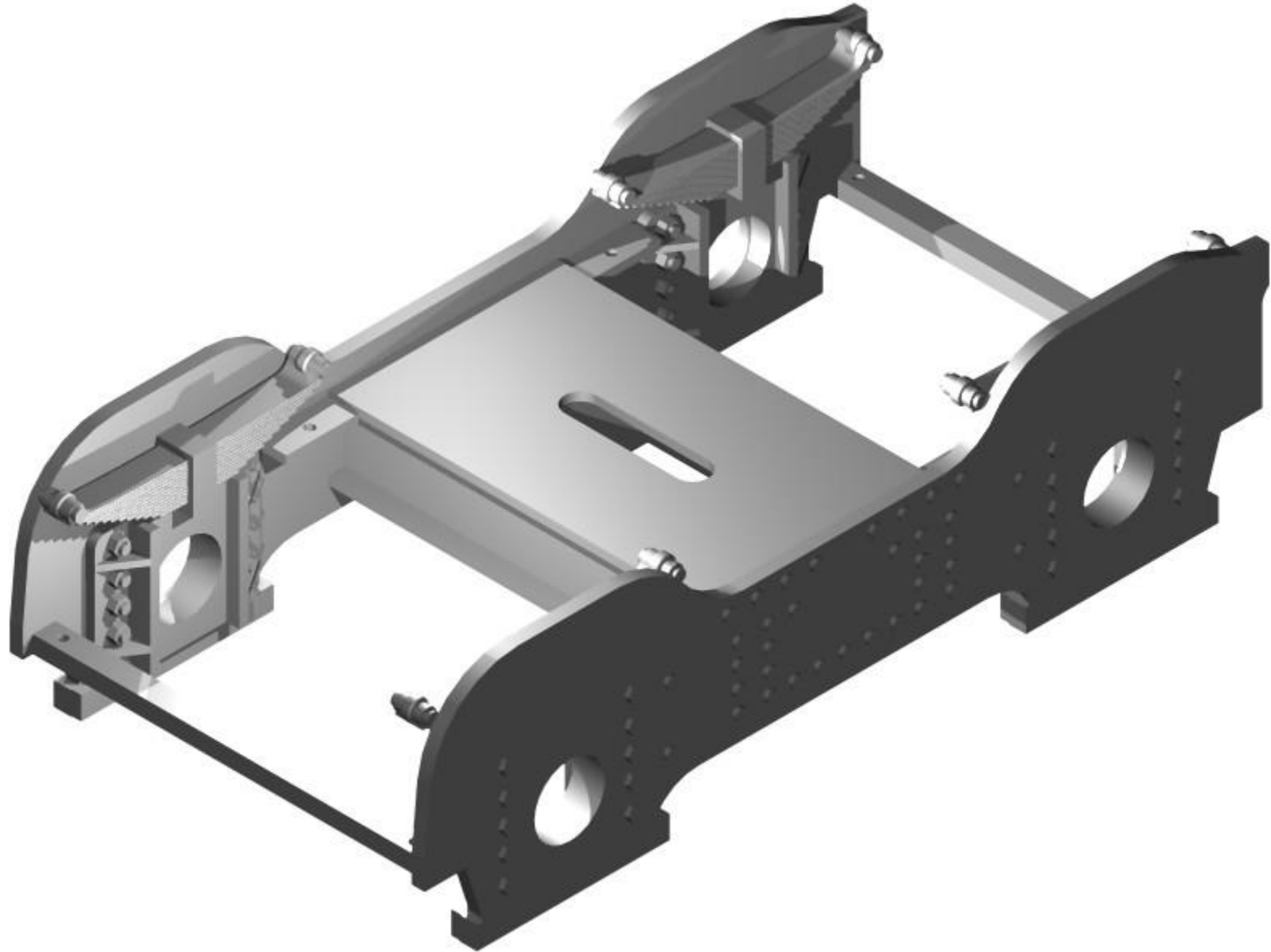


NSWGR Z20 7mm Tank Loco Kit

Dual Axle Pony Truck Step _20

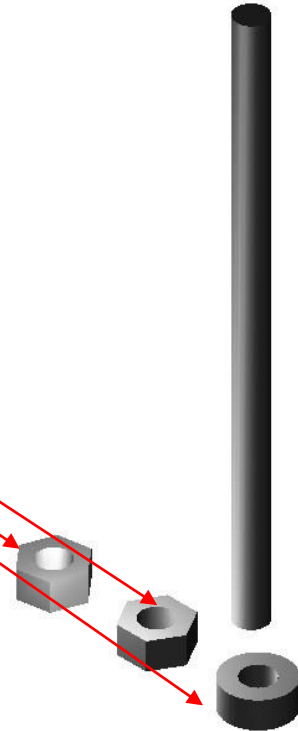
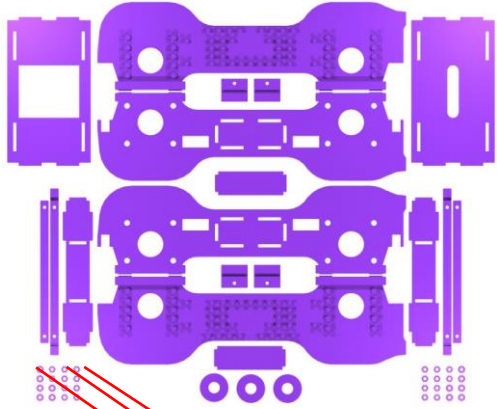


The pony truck ready to take the spring struts.



NSWGR Z20 7mm Tank Loco Kit

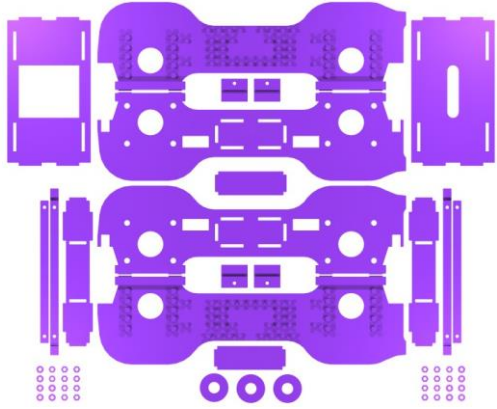
Dual Axle Pony Truck Step _21



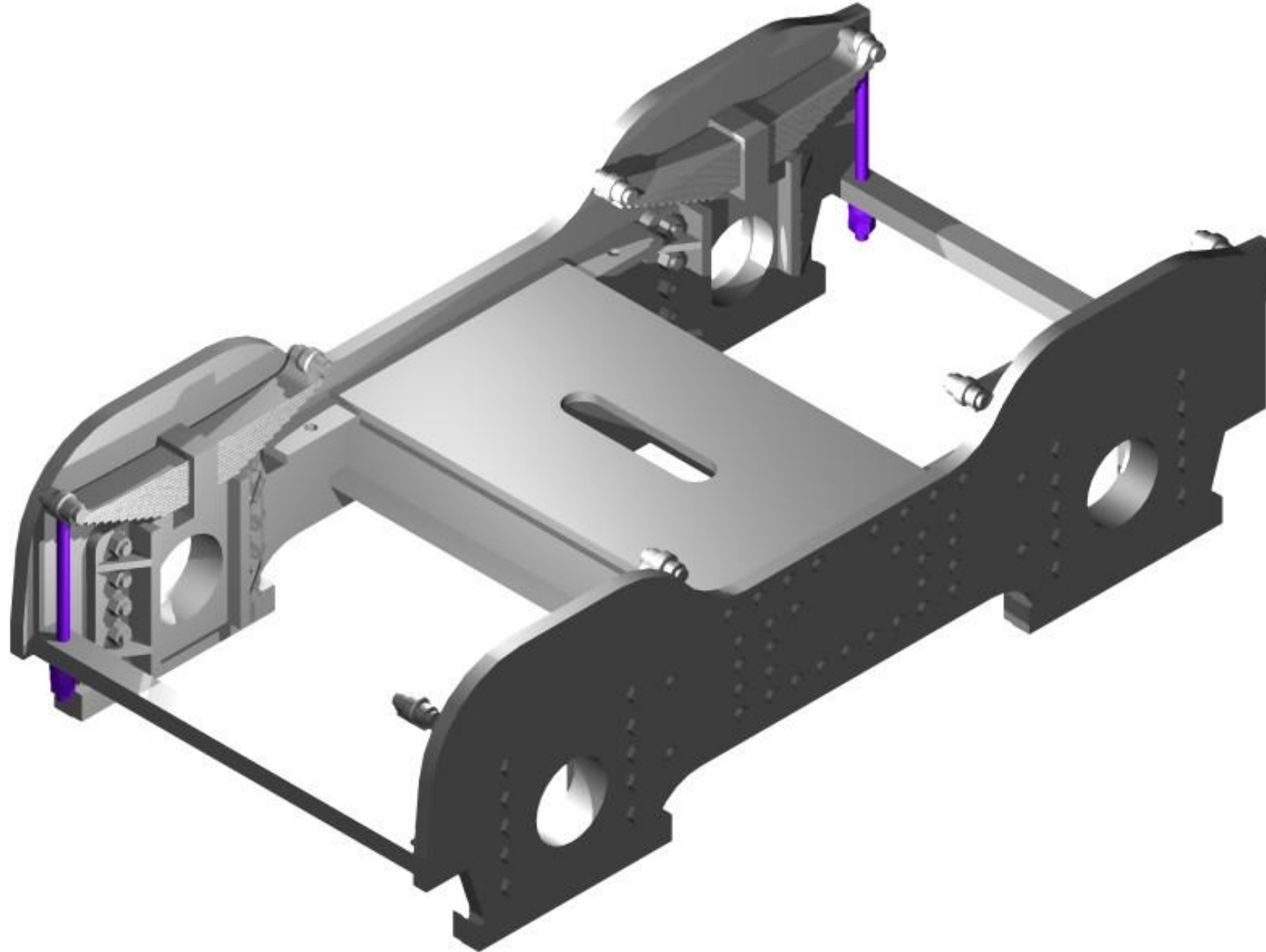
The outer struts are made up from 11 mm length of 0.6 mm wire that is soldered to a washer and to hex pieces simulating nuts. The wire is then fitted through the end brace. The holes may require a little bit a cleaning out with a 0.6 mm drill.

NSWGR Z20 7mm Tank Loco Kit

Dual Axle Pony Truck Step _22

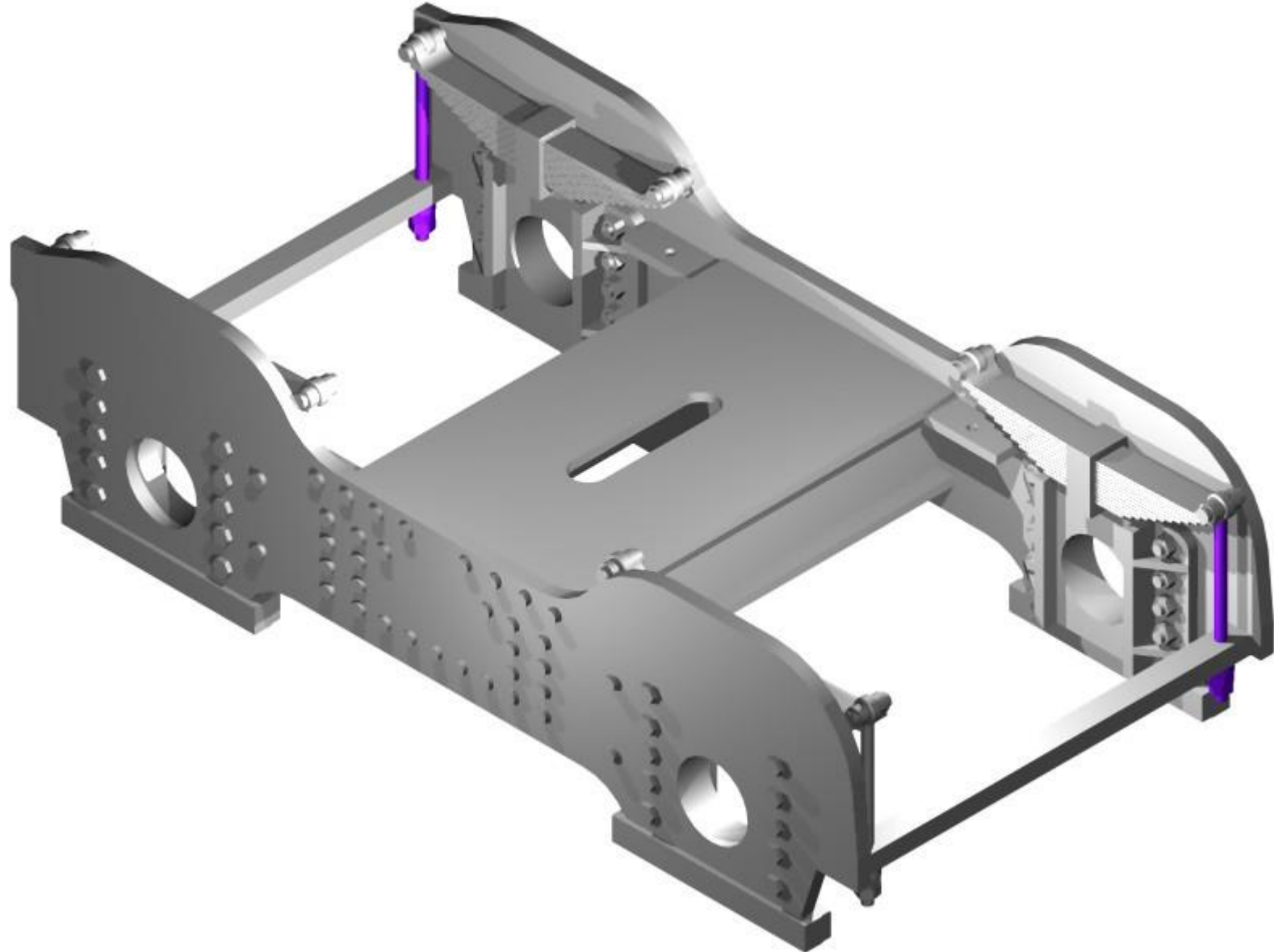
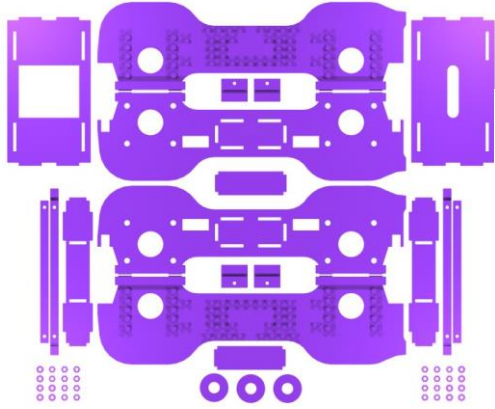


The struts are fitted into the brace and up into the underside of the spring. They should go at least half way into the spring, and either glued or soldered in place. Solder is the preferred method.



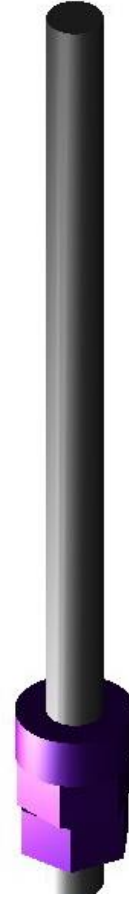
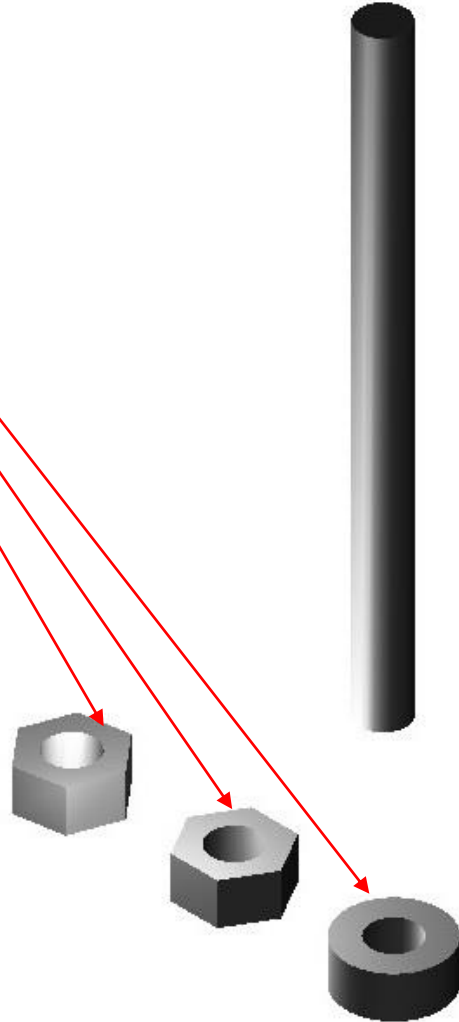
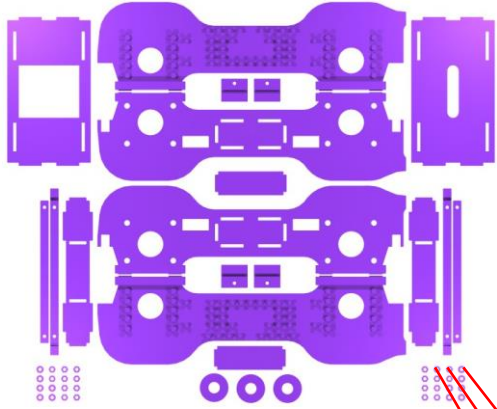
NSWGR Z20 7mm Tank Loco Kit

Dual Axle Pony Truck Step _23



NSWGR Z20 7mm Tank Loco Kit

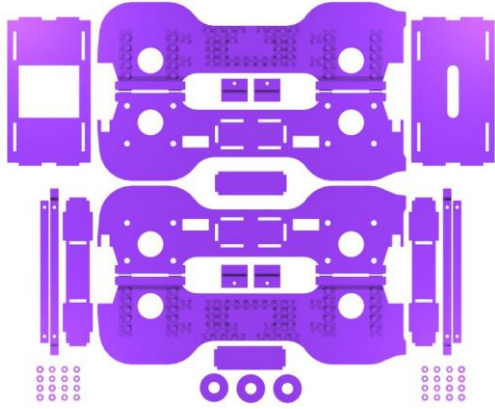
Dual Axle Pony Truck Step _24



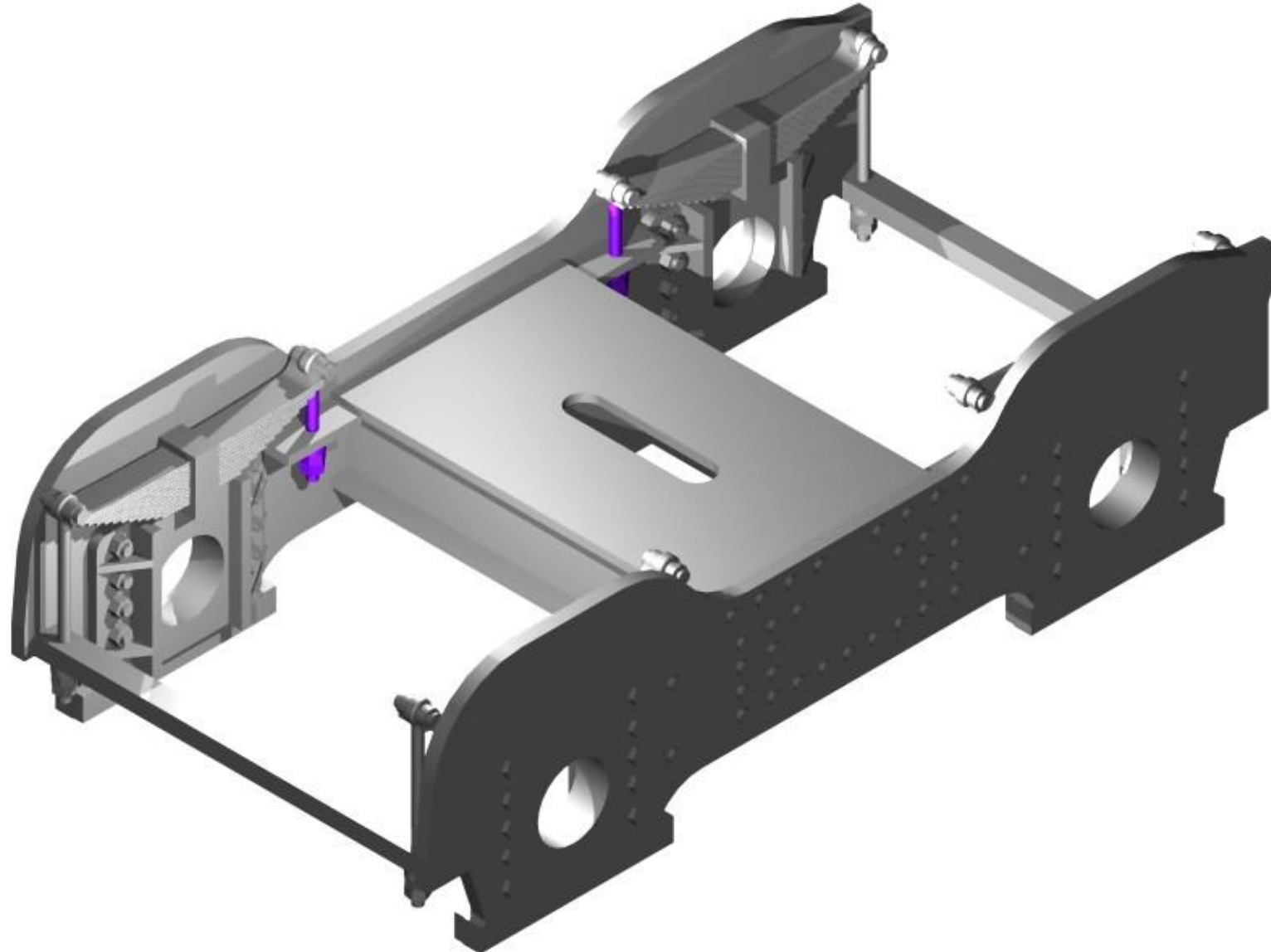
The inner struts are made up from 6.5 mm length of 0.6 mm wire that is soldered to a washer and to hex pieces simulating nuts. The wire is then fitted through the end brace. The holes may require a little bit a cleaning out with a 0.6 mm drill.

NSWGR Z20 7mm Tank Loco Kit

Dual Axle Pony Truck Step _25

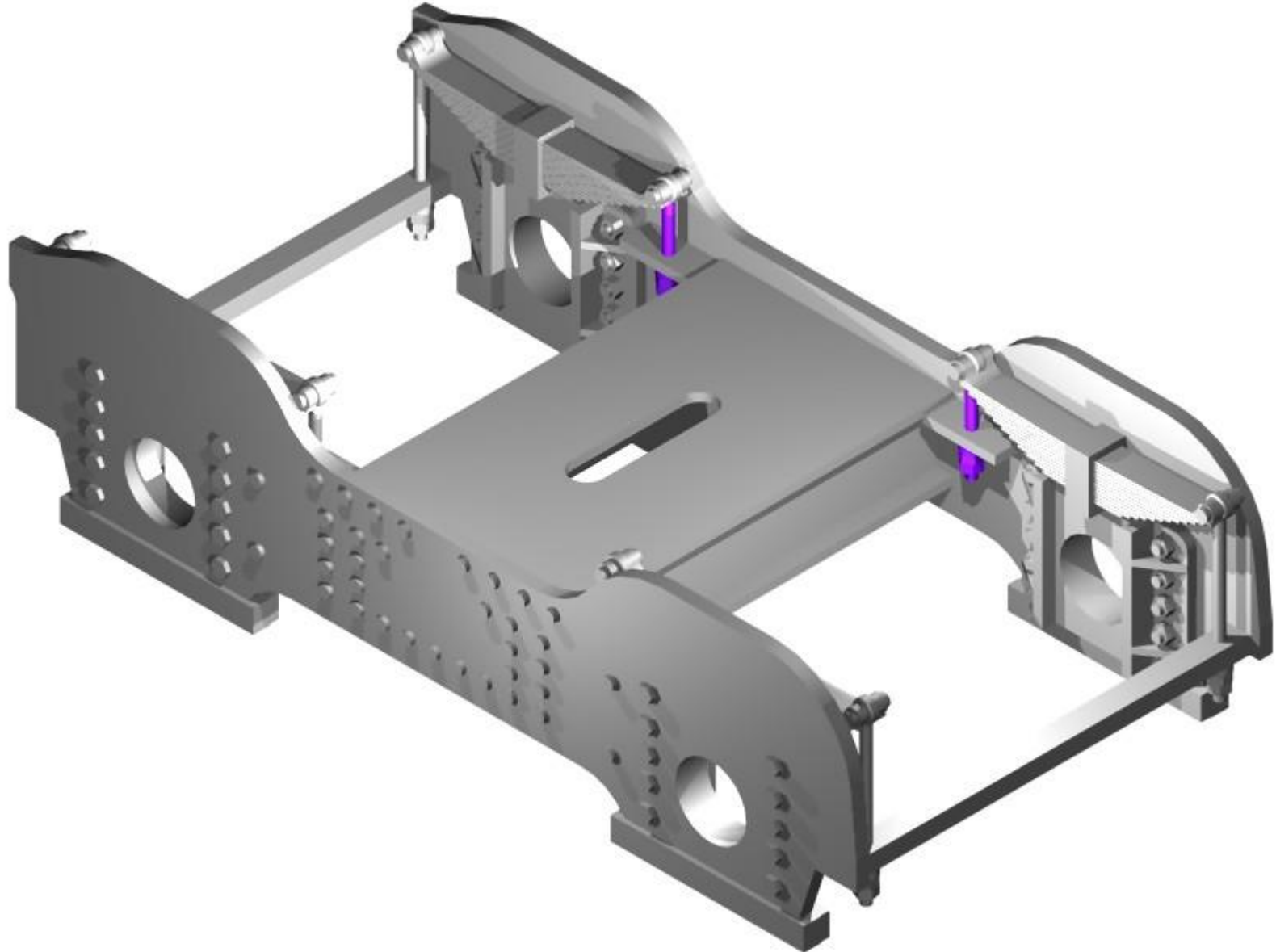
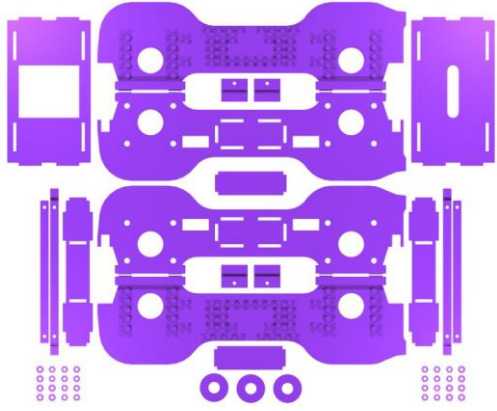


The struts are fitted into the brace and up into the underside of the spring. They should go at least half way into the spring, and either glued or soldered in place. Solder is the preferred method.



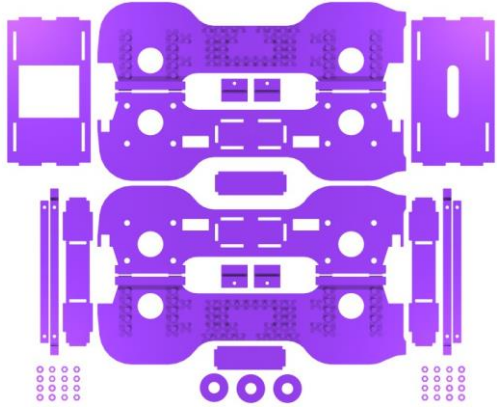
NSWGR Z20 7mm Tank Loco Kit

Dual Axle Pony Truck Step _26



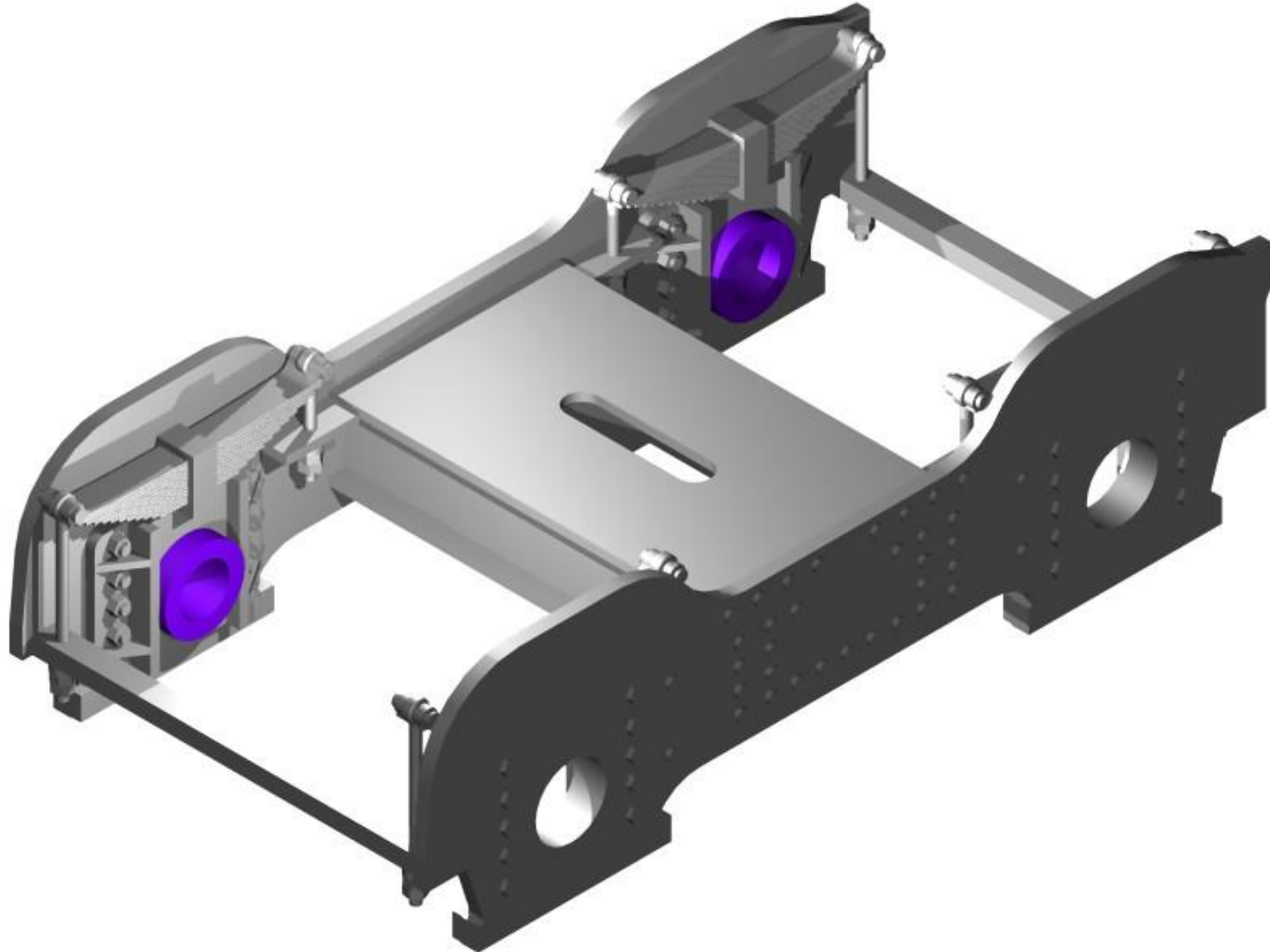
NSWGR Z20 7mm Tank Loco Kit

Dual Axle Pony Truck Step _27



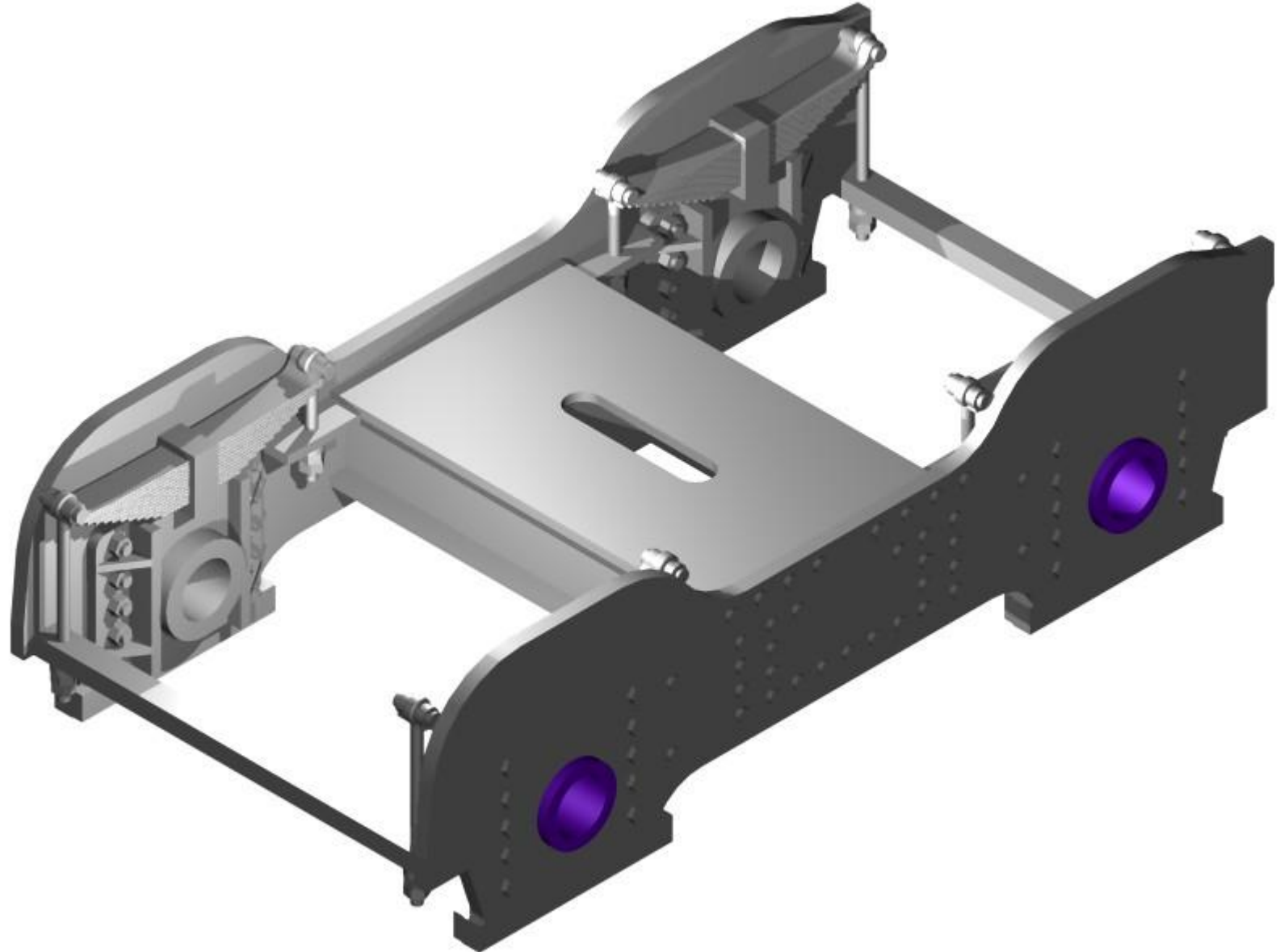
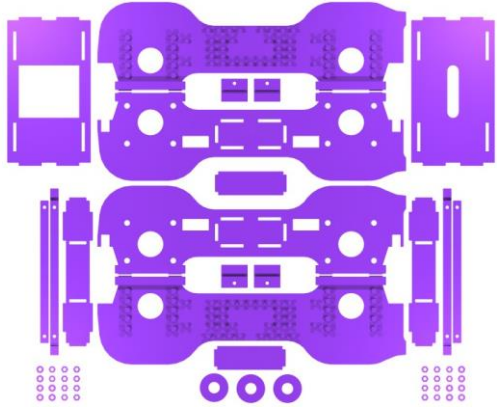
Before we go to the next stage of the build, ensure that the pony truck is thoroughly washed in warm soapy water and dried.

The bearings are fitted next and can be soldered in place. Make sure that the axles spin freely in the bearings before soldering them into place. Also make sure that they are square with the pony truck.



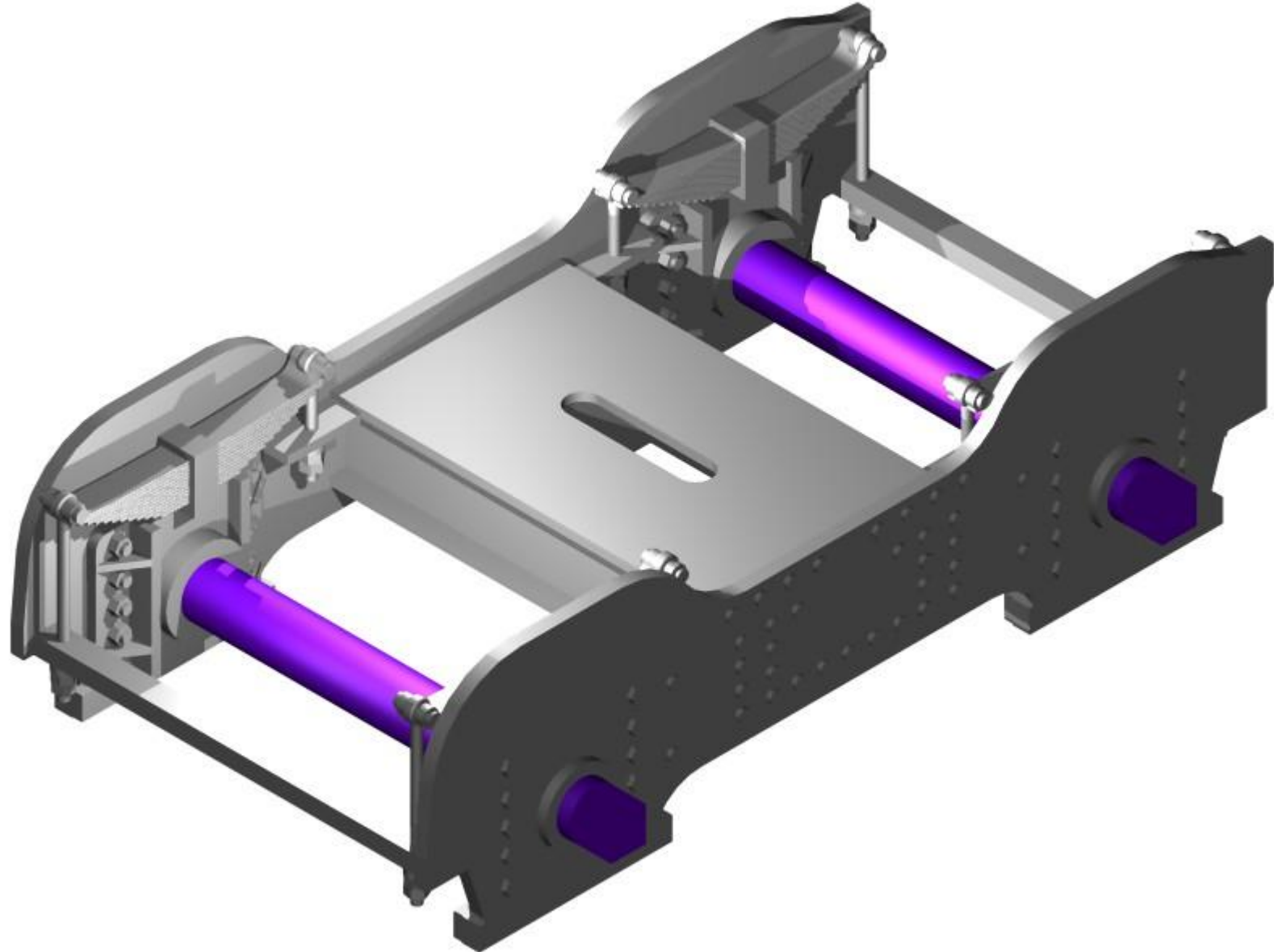
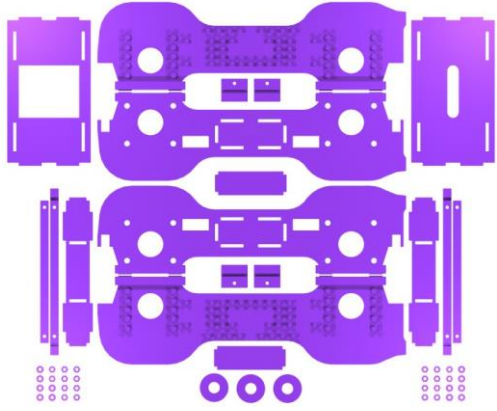
NSWGR Z20 7mm Tank Loco Kit

Dual Axle Pony Truck Step _28



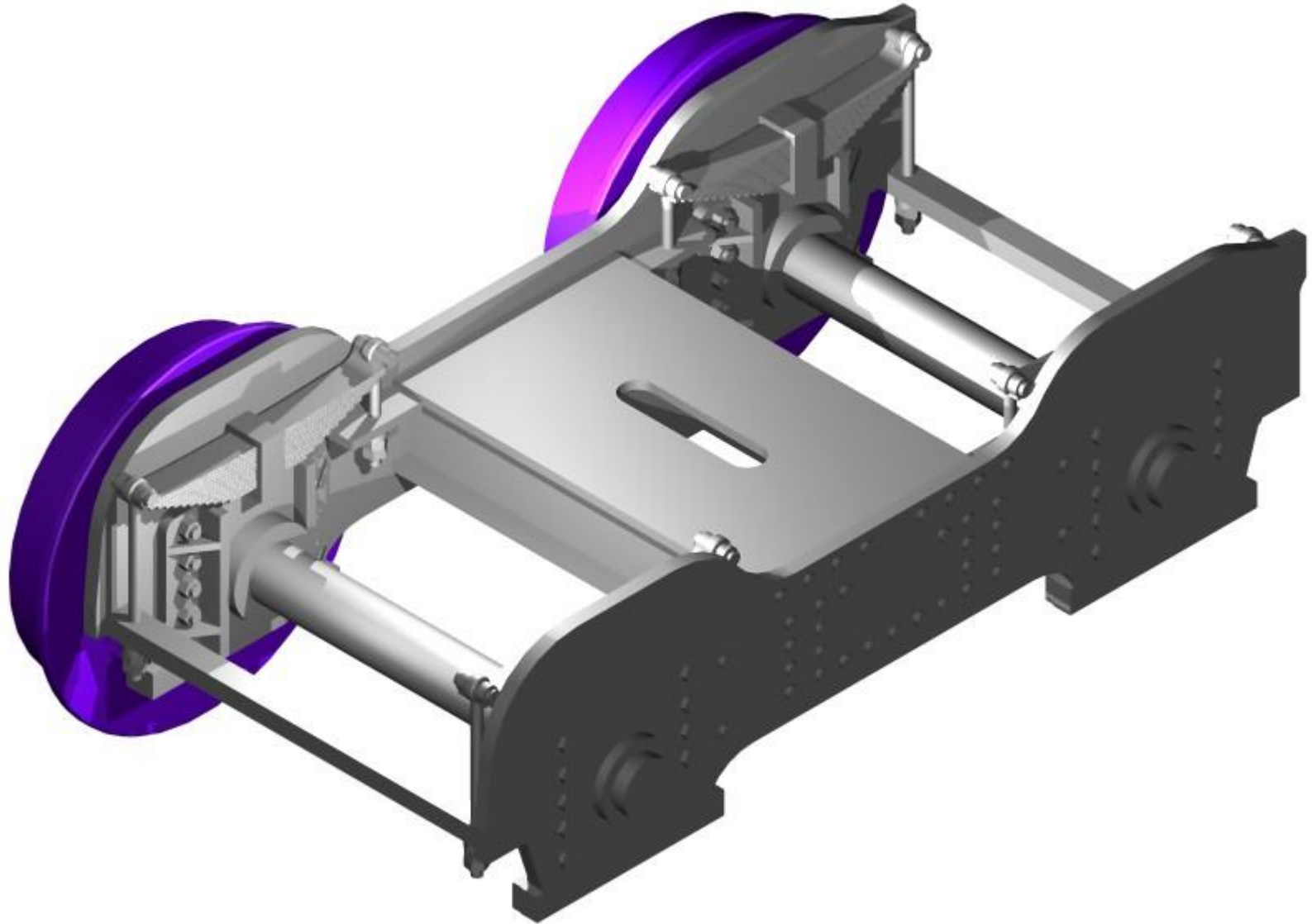
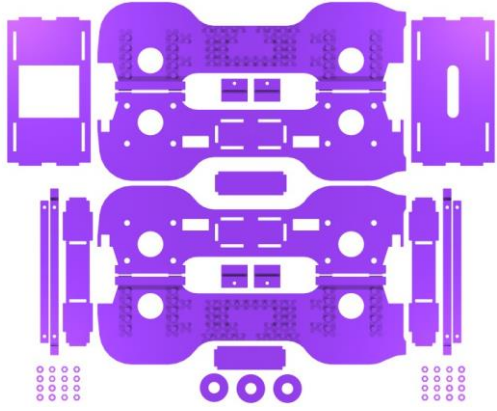
NSWGR Z20 7mm Tank Loco Kit

Dual Axle Pony Truck Step _29



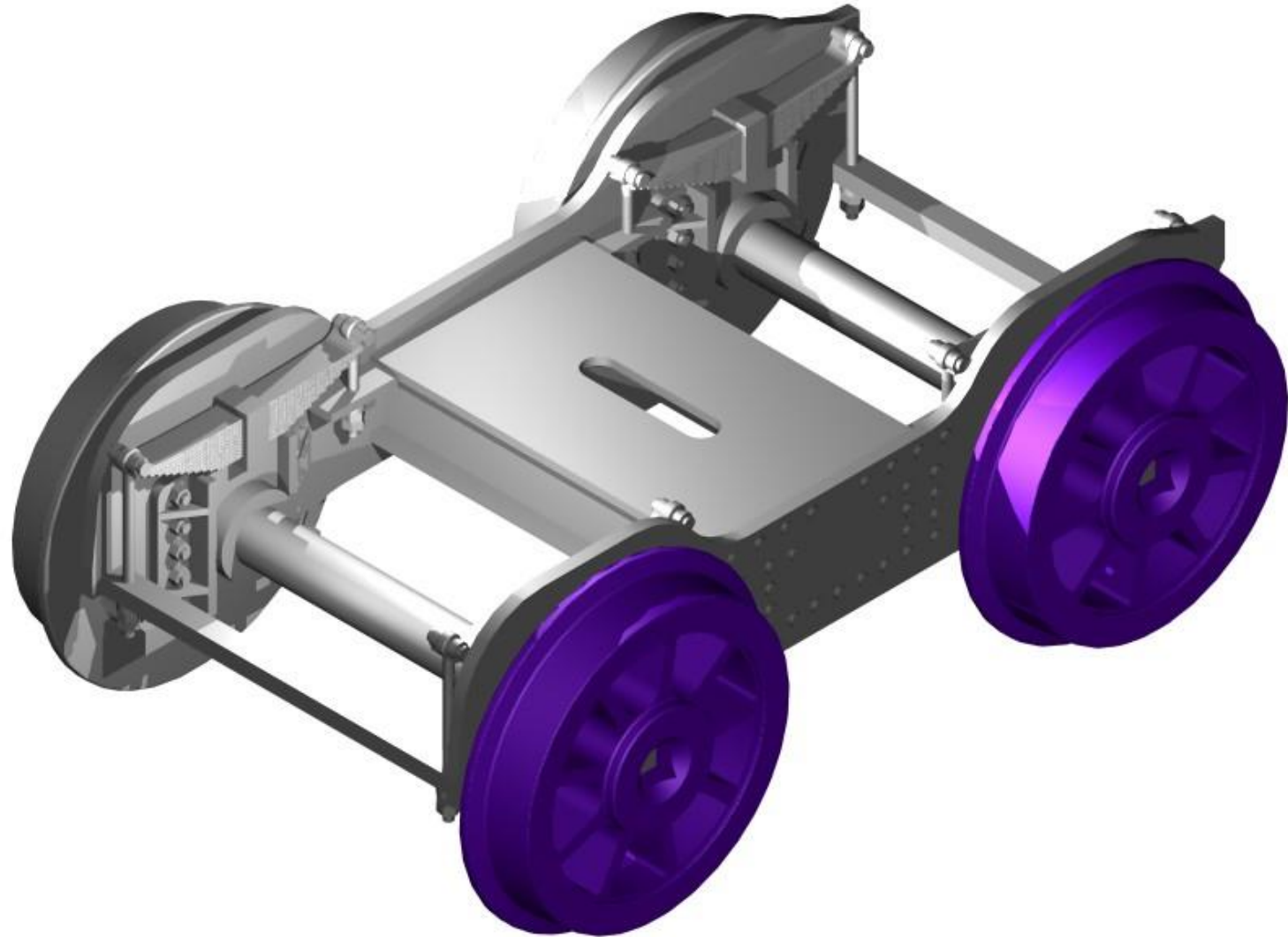
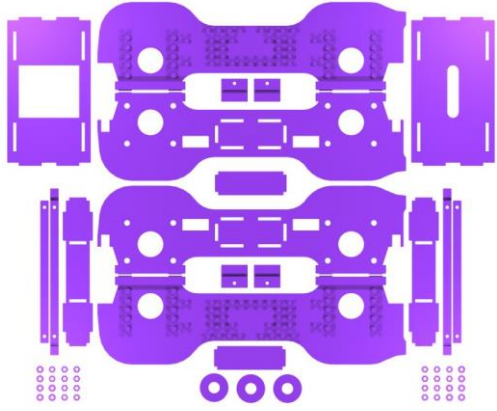
NSWGR Z20 7mm Tank Loco Kit

Dual Axle Pony Truck Step _30



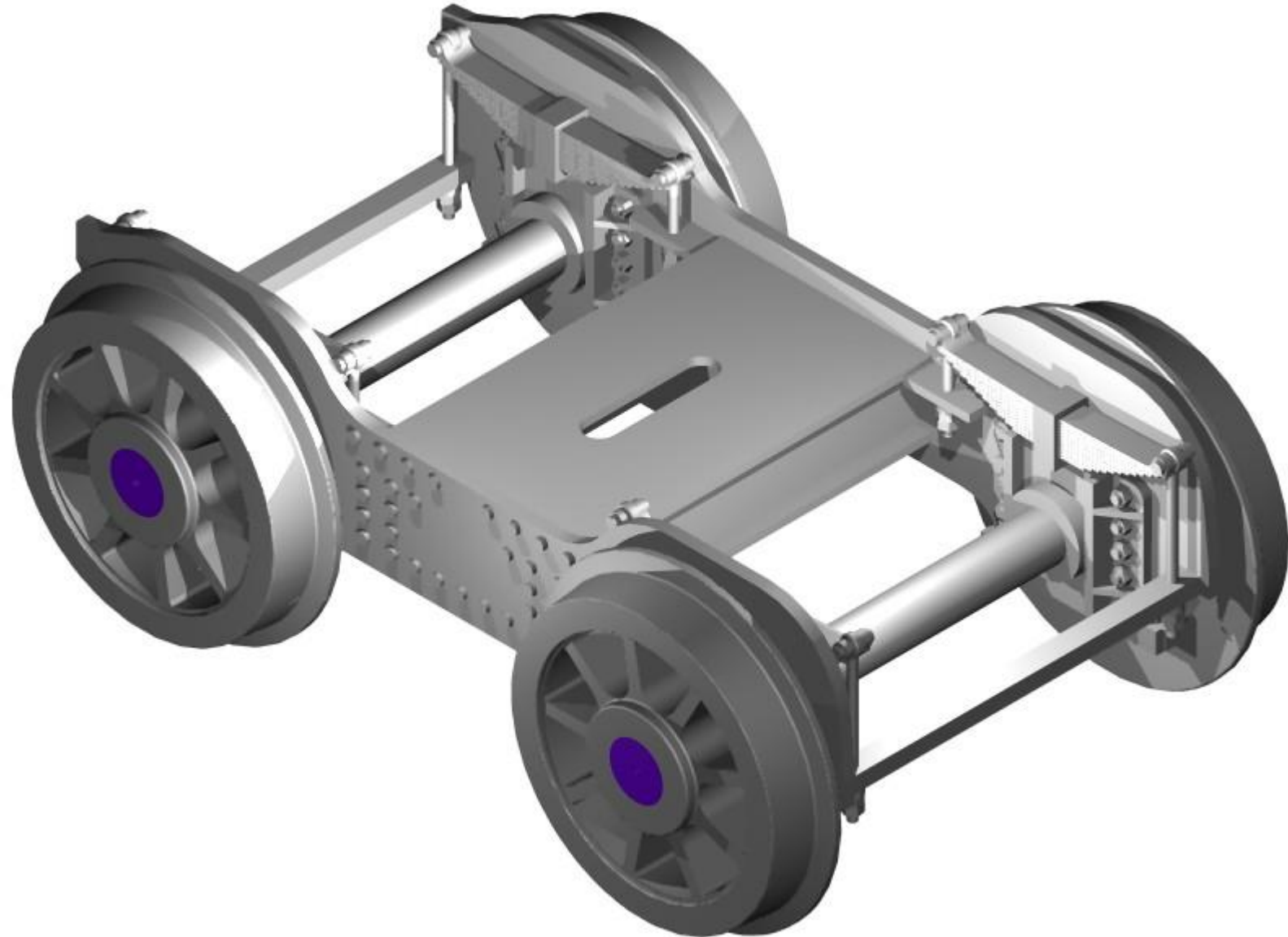
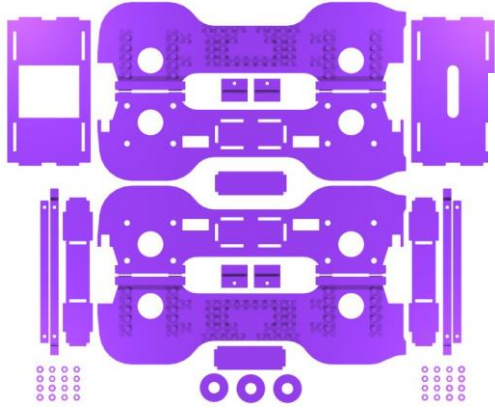
NSWGR Z20 7mm Tank Loco Kit

Dual Axle Pony Truck Step _31



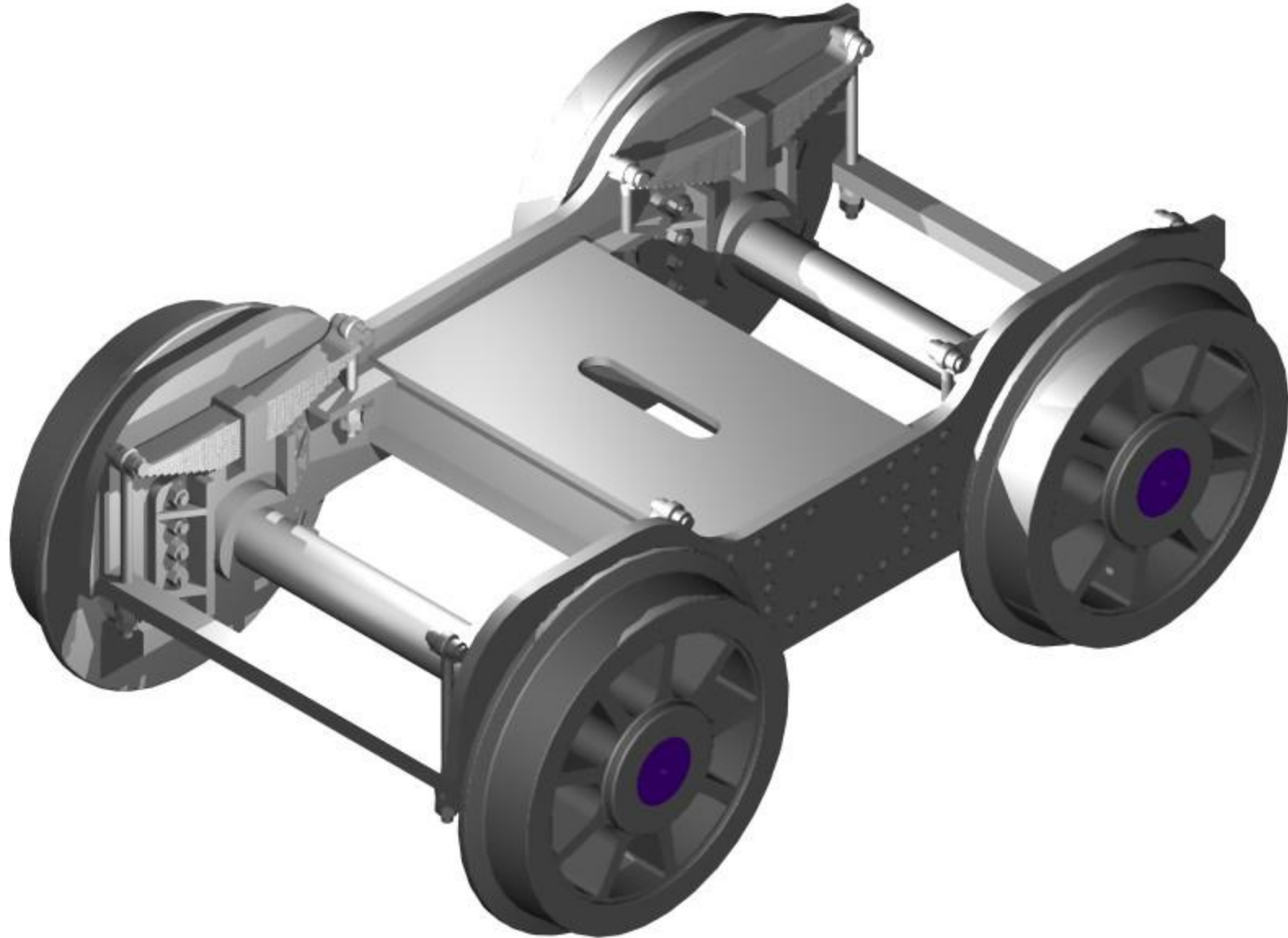
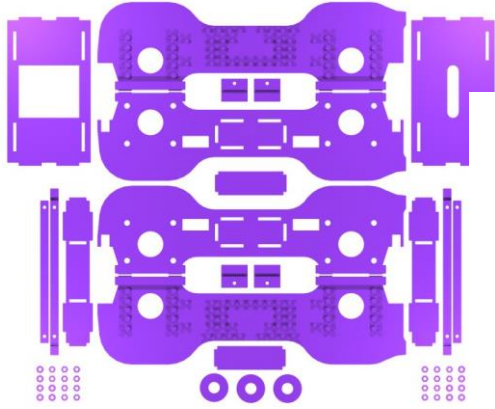
NSWGR Z20 7mm Tank Loco Kit

Dual Axle Pony Truck Step _32



NSWGR Z20 7mm Tank Loco Kit

Dual Axle Pony Truck Step _33



NSWGR Z20 7mm Tank Loco Kit

Dual Axle Pony Truck Step _34

